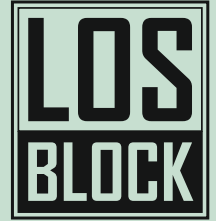


Living Cell Closed

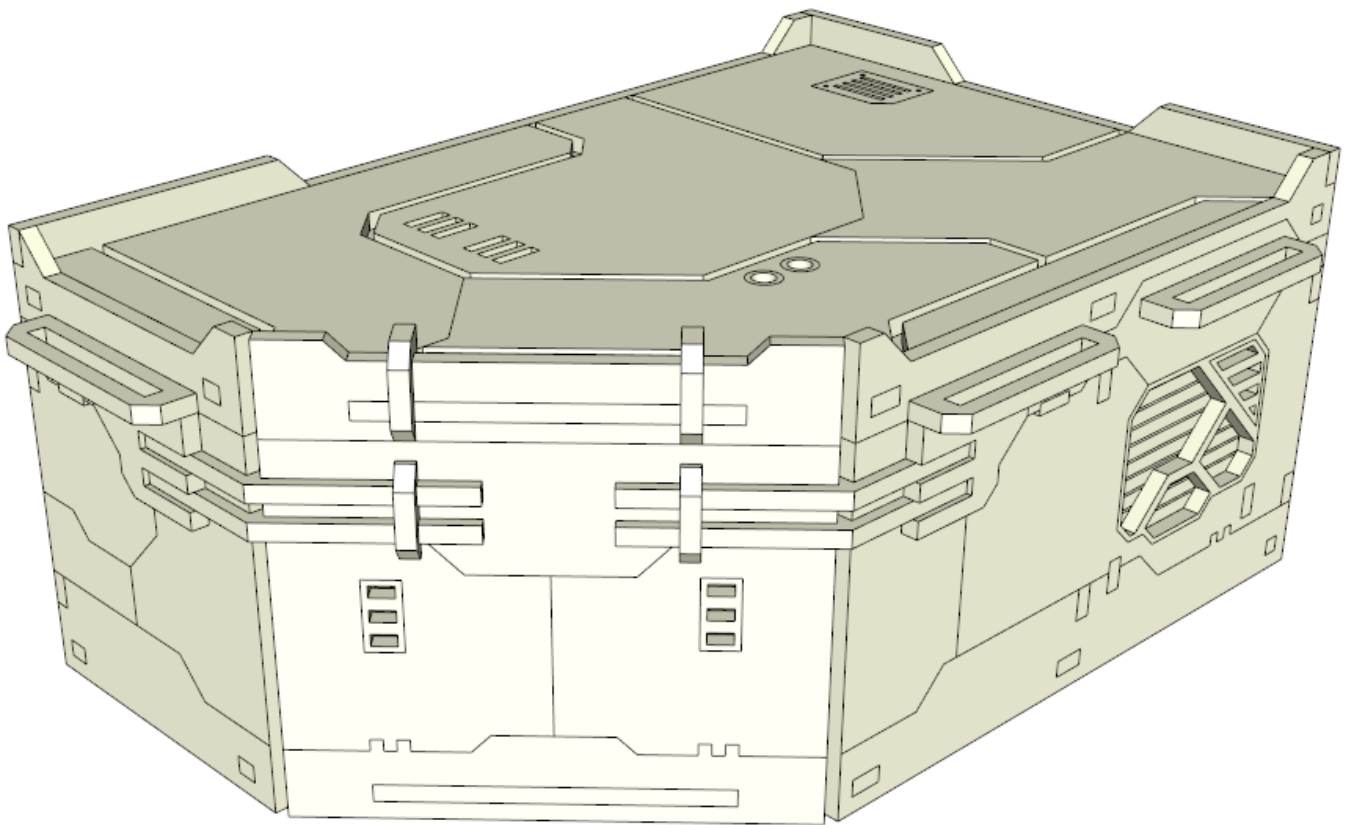
main and additional floors

construction manual



wargame scenery
&
accessories

- ❗ **Living Cell Closed L** is the mirror reflection of presented in this manual **Living Cell Closed R** and their construction process is the same.
- ❗ Construction process of the additional floor is the same as for presented here main floor.



Material: HDF

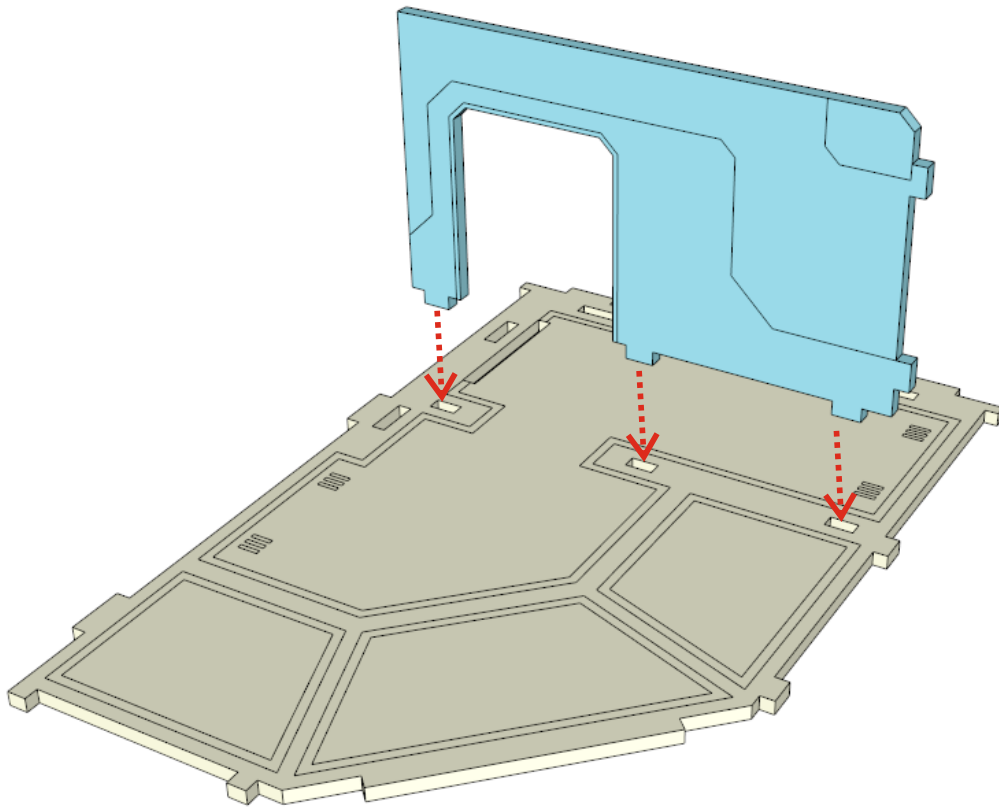
Push details from the form and clear the places where it were connected with model knife or flint-paper.
Be sure that protection cover on the methacrylate parts (if they are included) is removed.

We are recommend to use PVA glue or any other glue for wood.
For methacrylate parts you can use super-glue or its equivalents.
If you have any questions write us - store@losblock.com

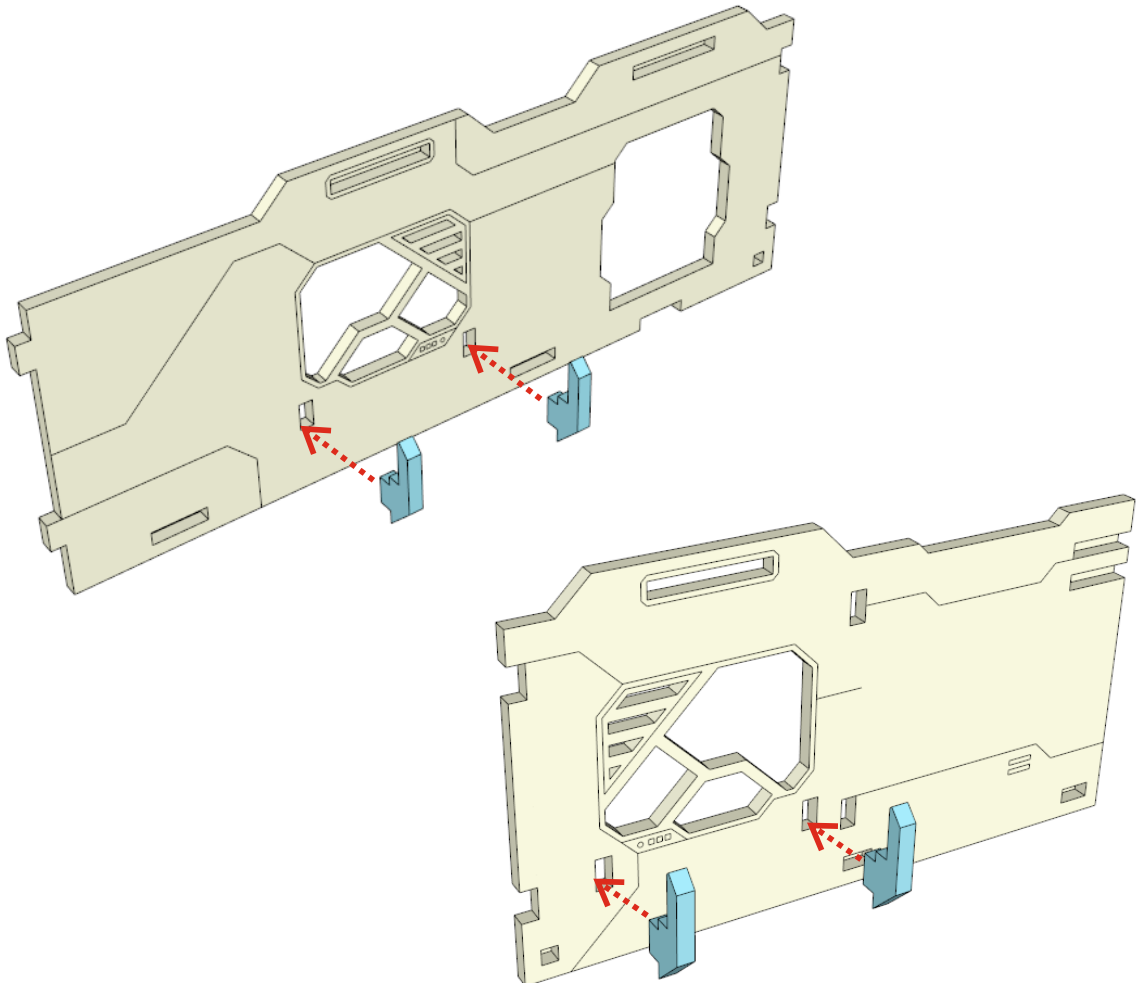
Small parts. Not recommended for children under 8 years.
Real object can slightly differ from presented in this manual.

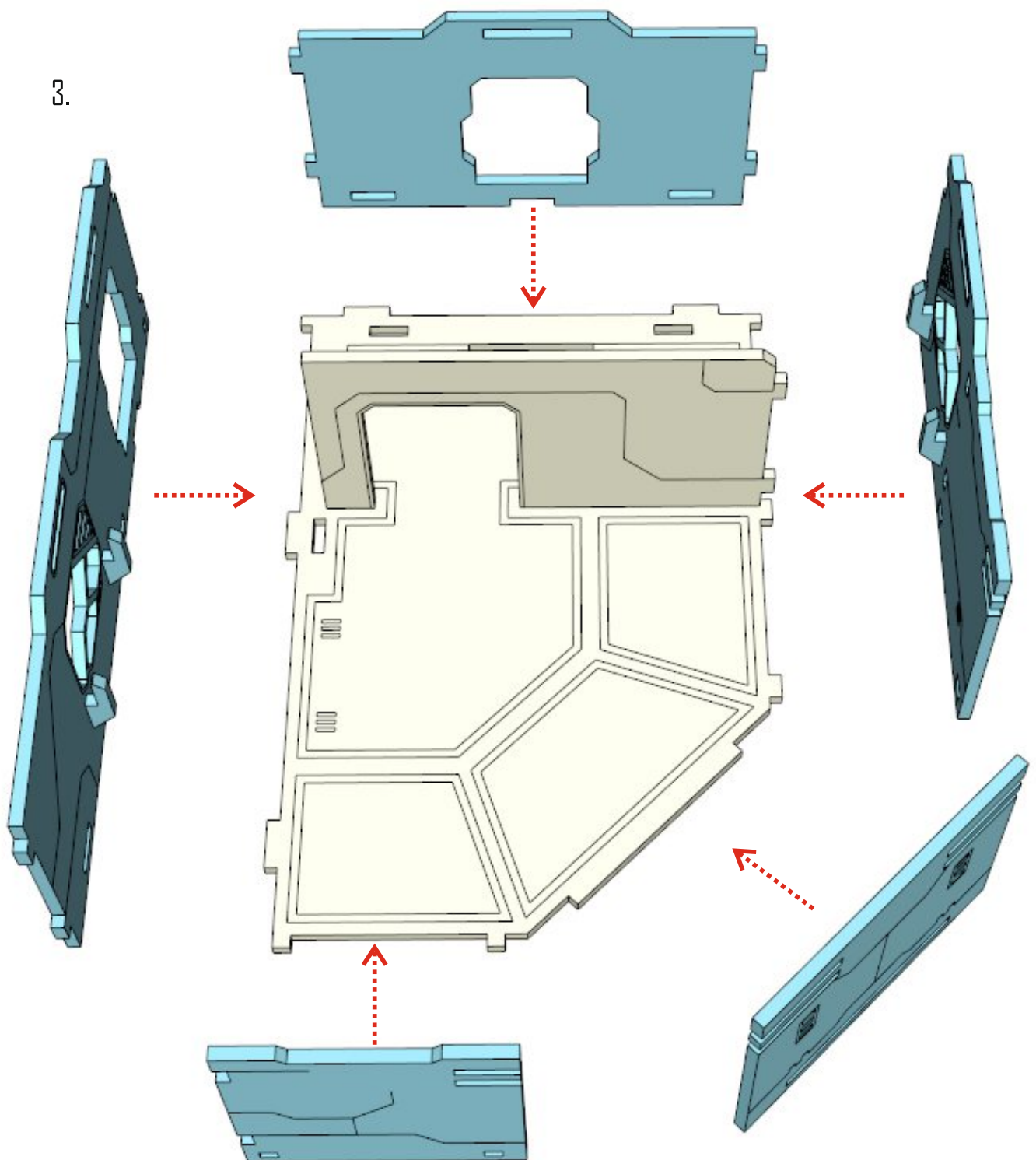
© LOSBLOCK, 2017
www.losblock.com

1.

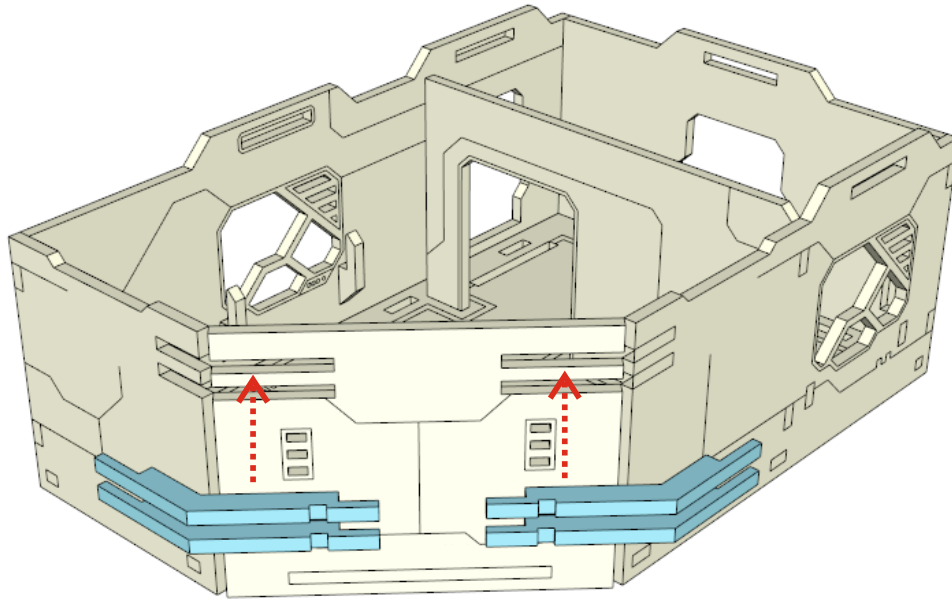


2.

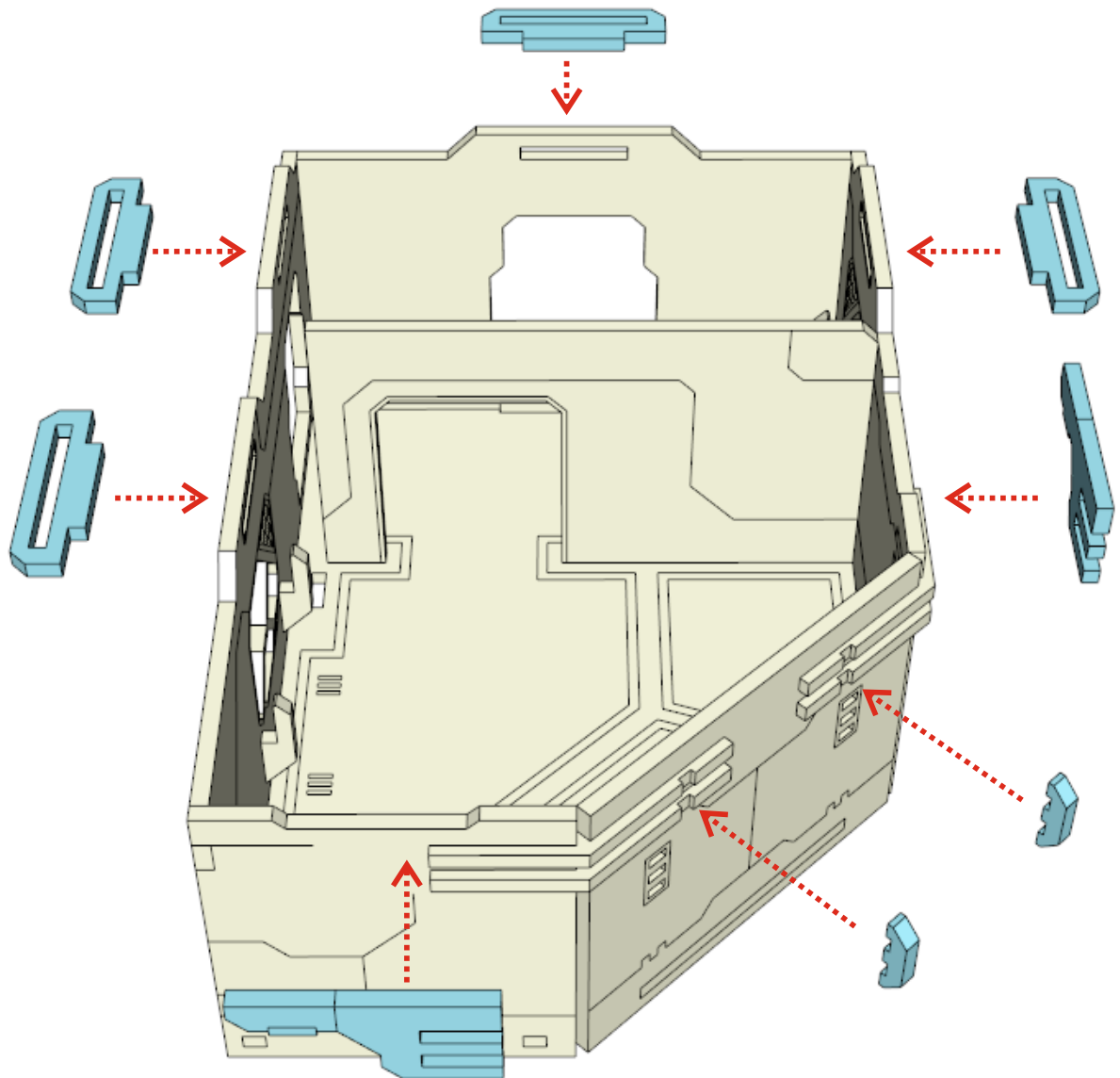




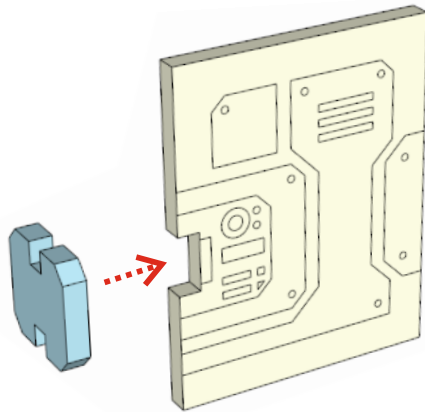
4.



5.

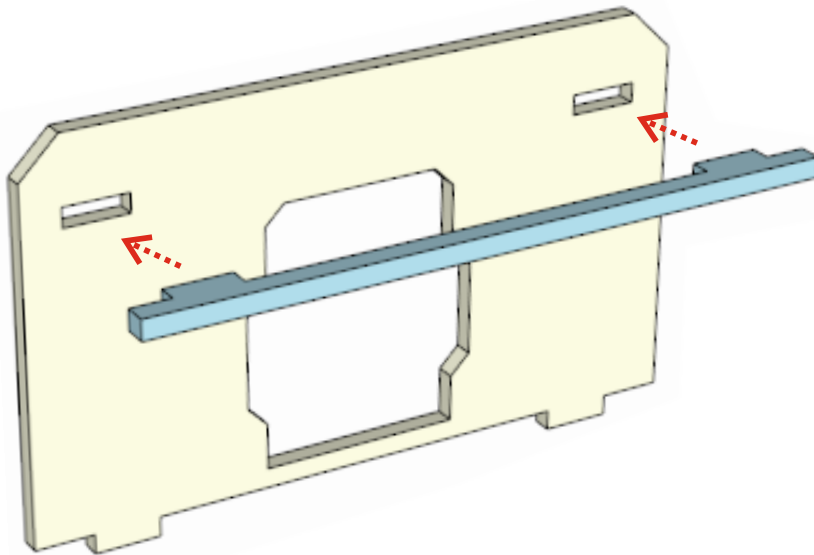


6.

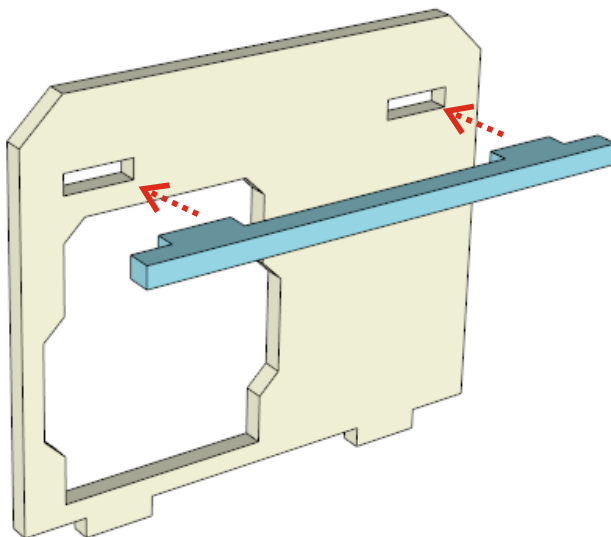


Repeat this step
for every door.

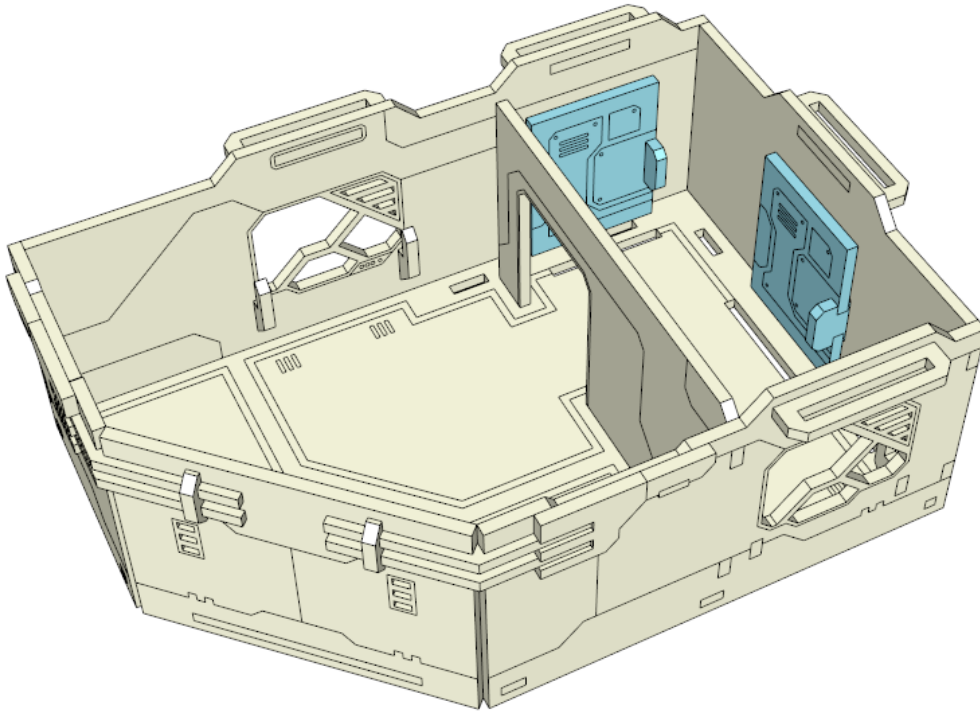
7.



8.

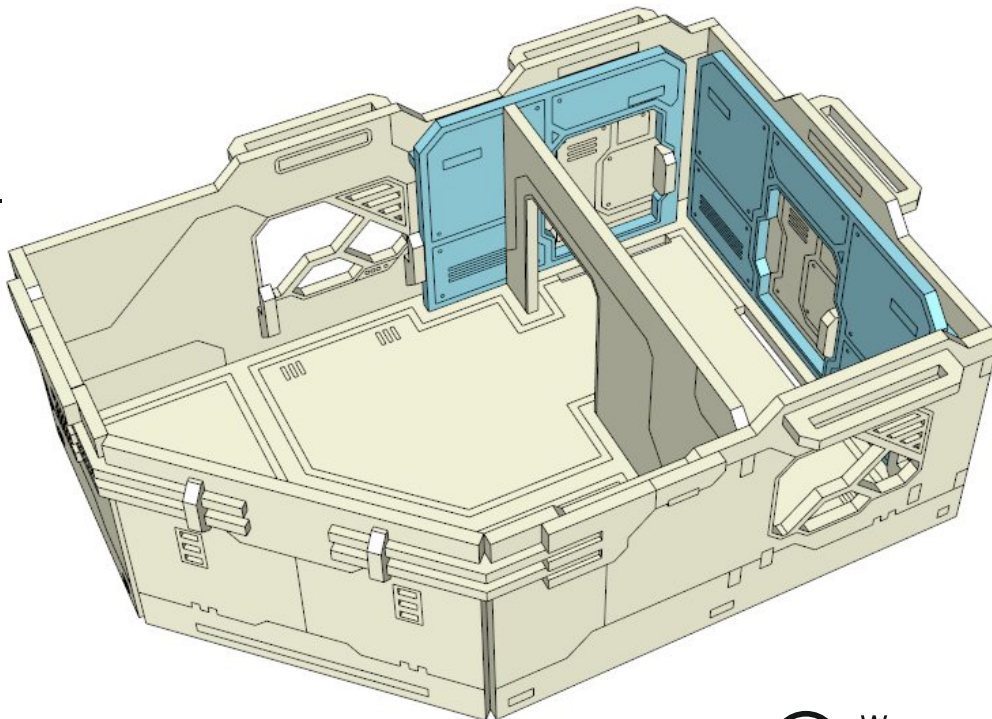


9.



Place doors in the apertures without glue.

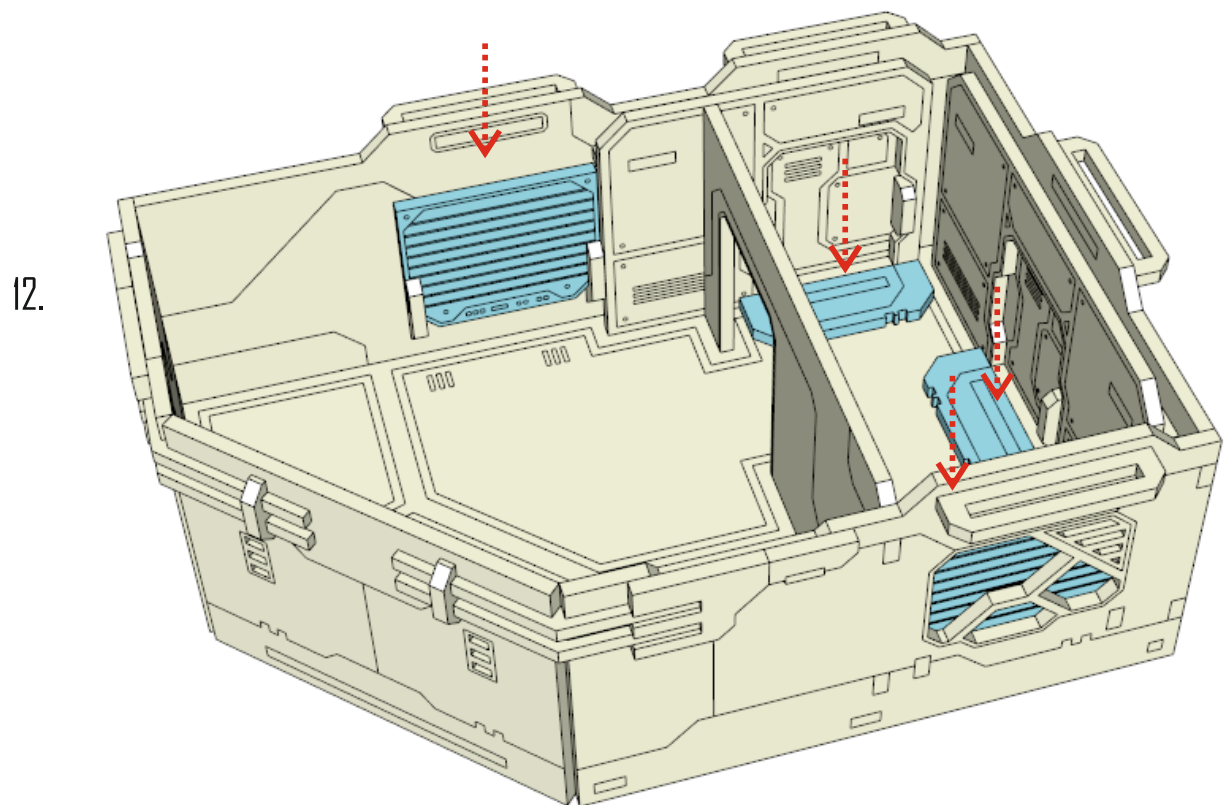
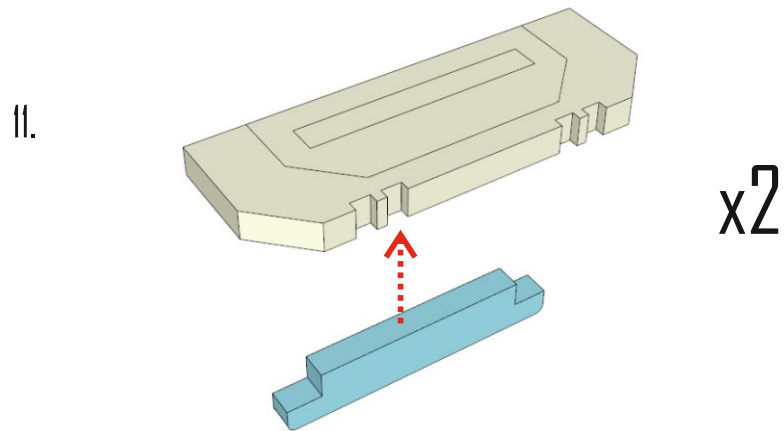
10.



We are recommend to glue this parts after painting.



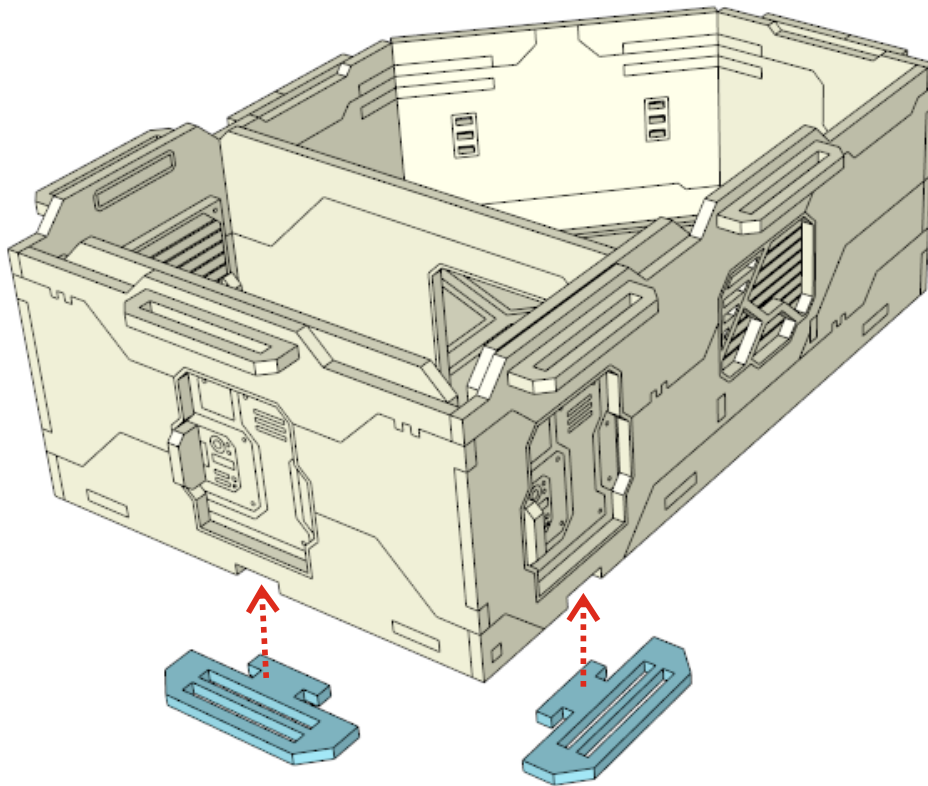
Be sure that doors are moving freely.



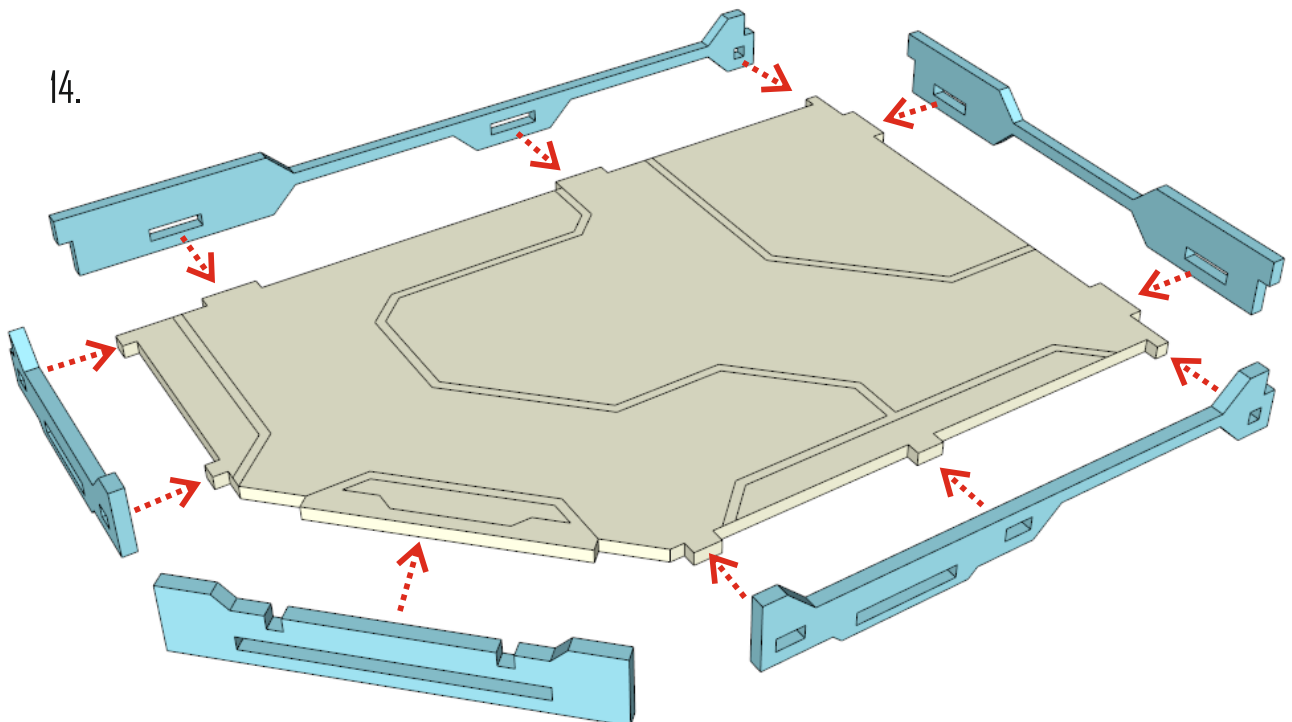
Place details on the marked places without glue. They must stay removable.

! This and next steps are only for the main floor.

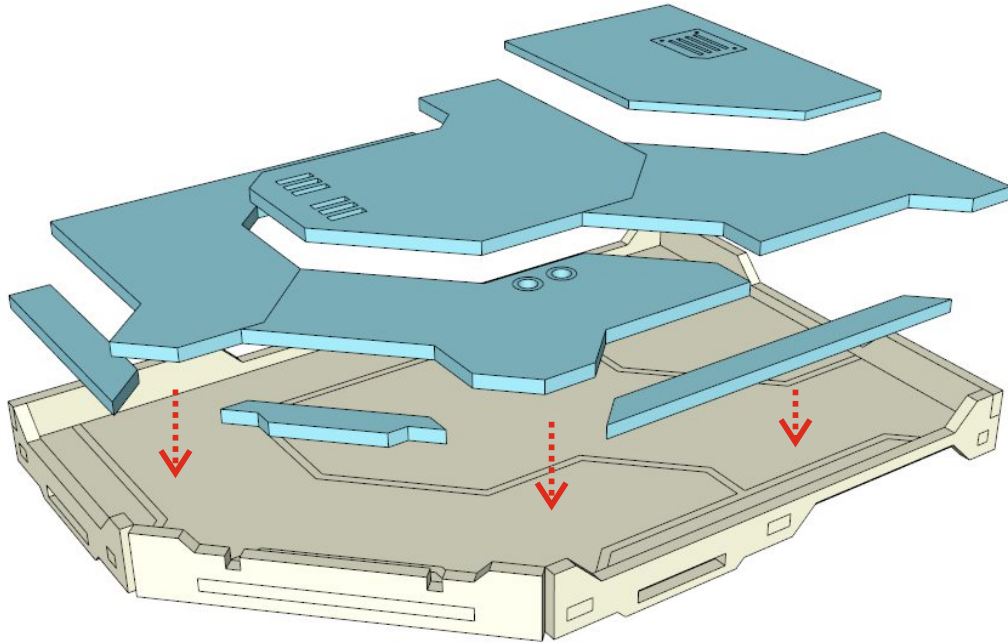
13.



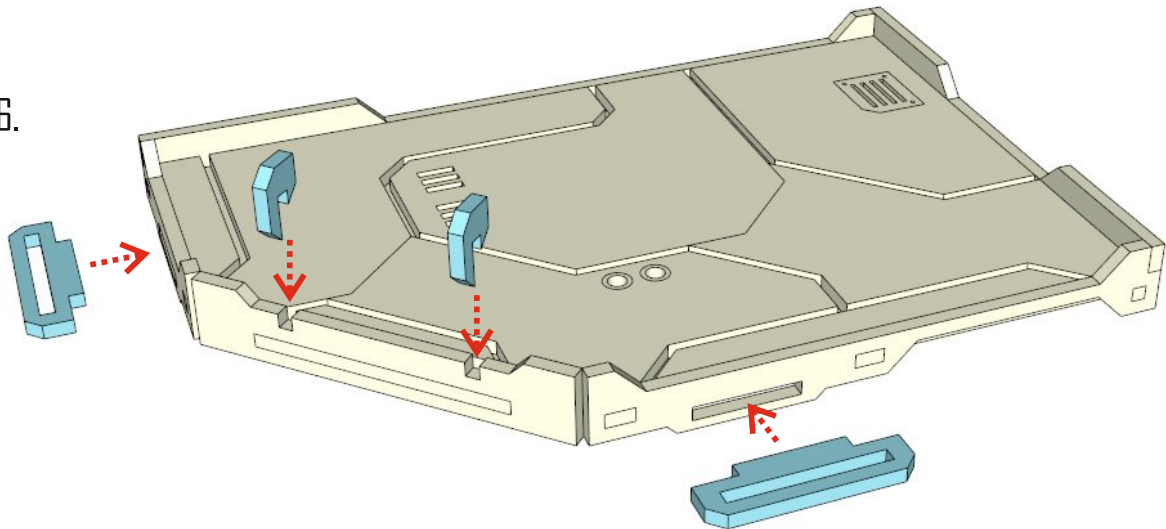
14.



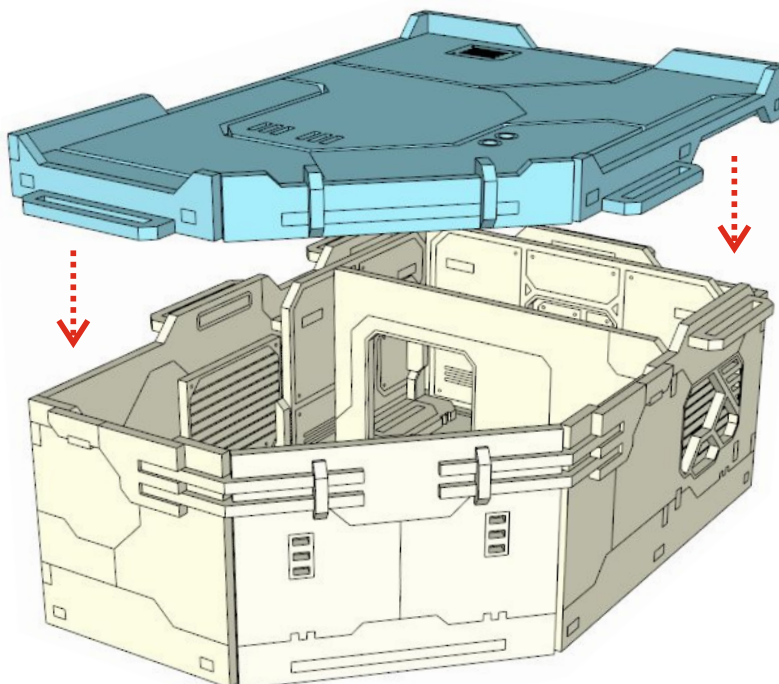
15.



16.



17.



Do not glue roof to the building.