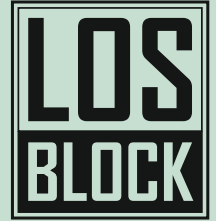


Living Cell R, L

additional floor

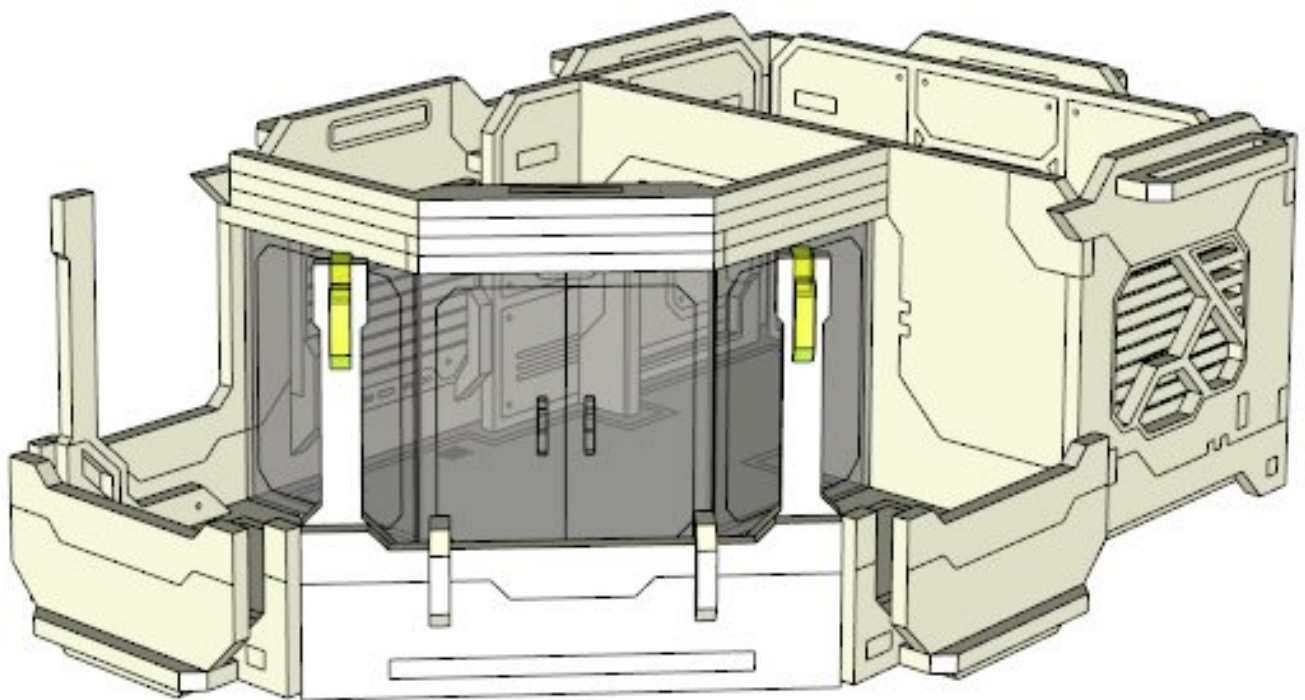
construction manual



wargame scenery
&
accessories



Living Cell L is the mirror reflection of presented in this manual
Living Cell R and their construction process is the same.



Material: methacrylate, HDF

Remove the protection cover from details before construction.

We recommend to use the SuperGlue or its equivalents.

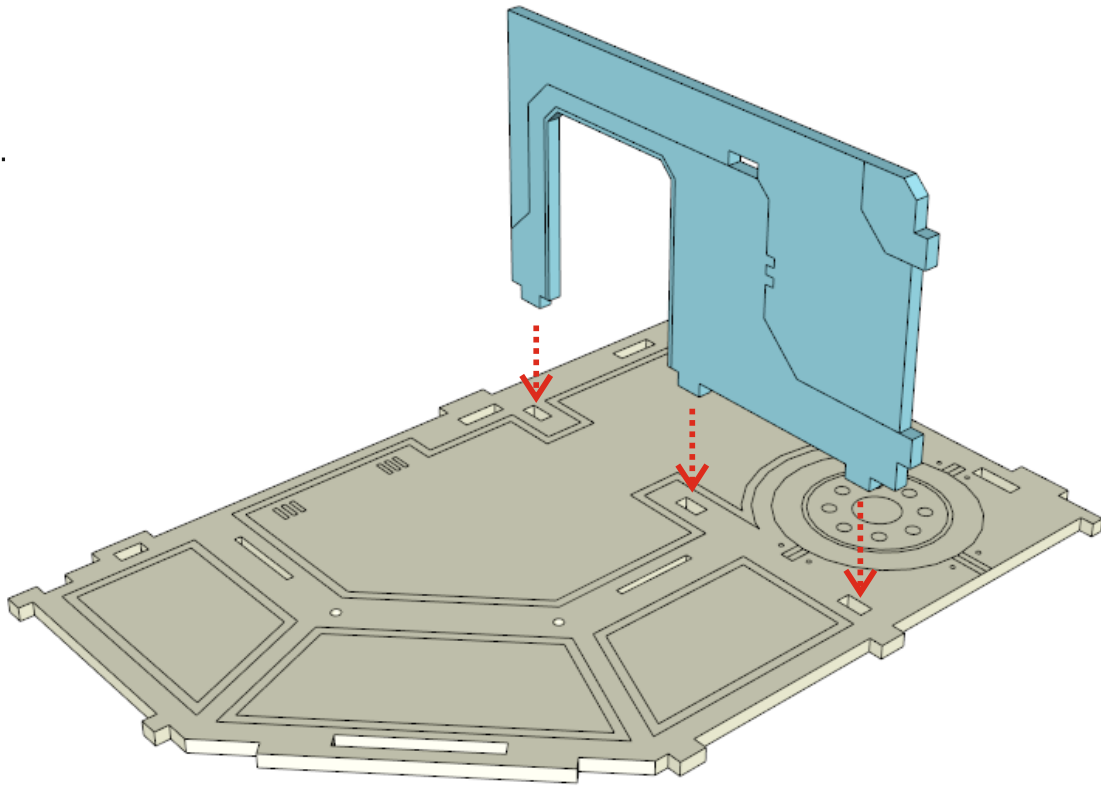
Degrease all surfaces before painting.

If you have any questions write us - store@losblock.com

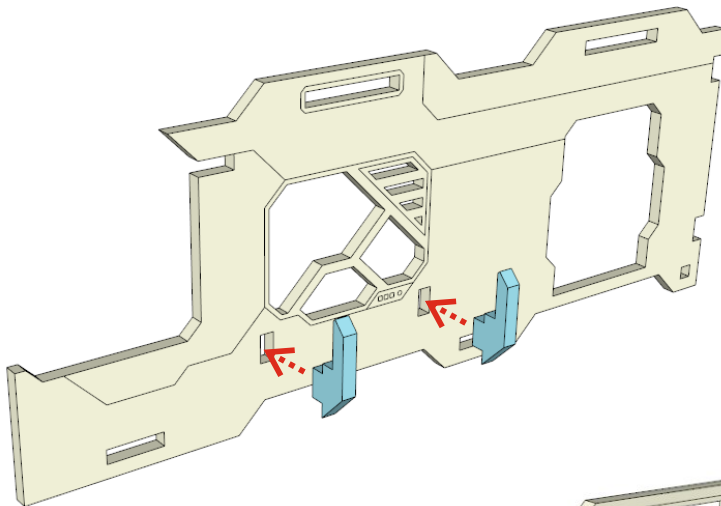
Small parts. Not recommended for children under 6 years.
Real object can slightly differ from presented in this manual.

LOS BLOCK, 2015
www.losblock.com

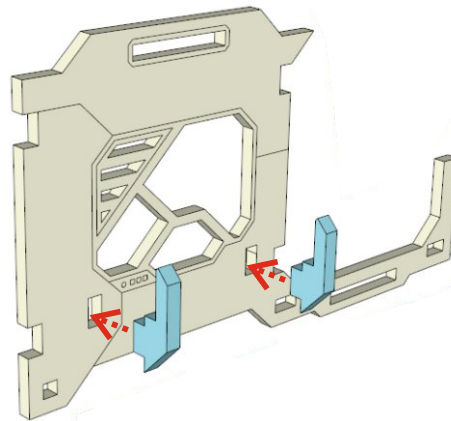
1.

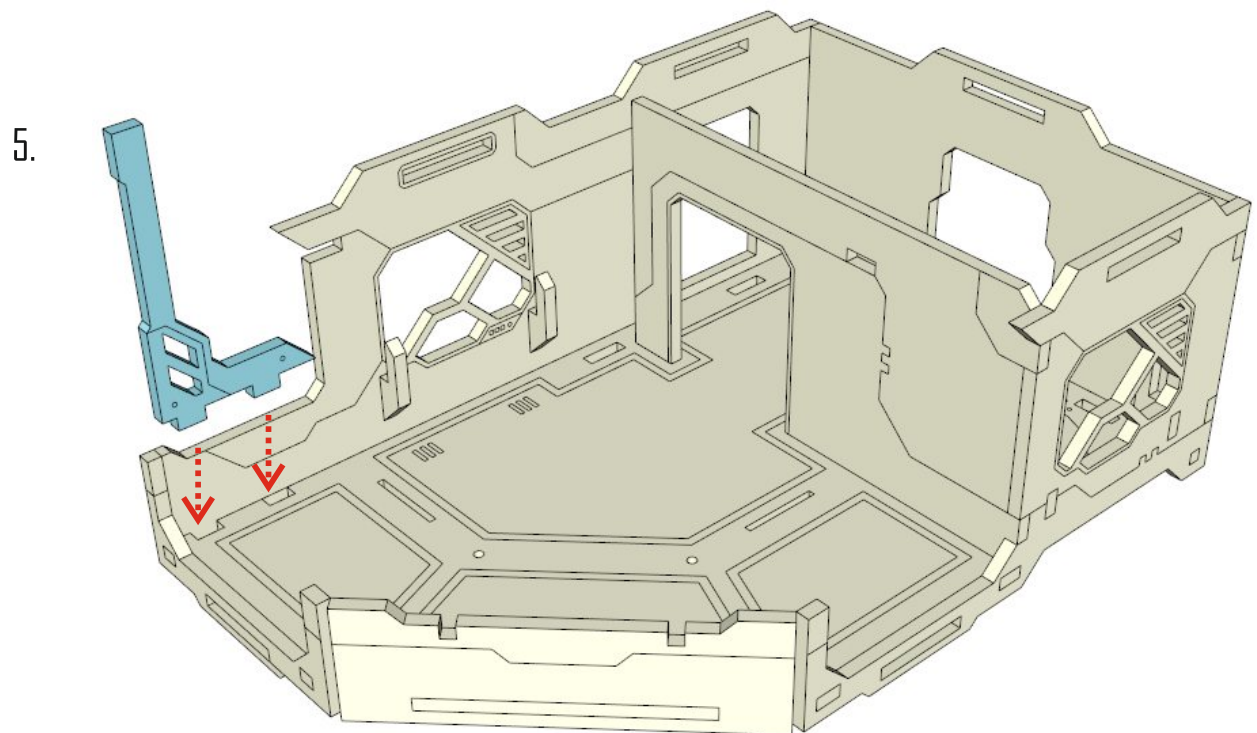
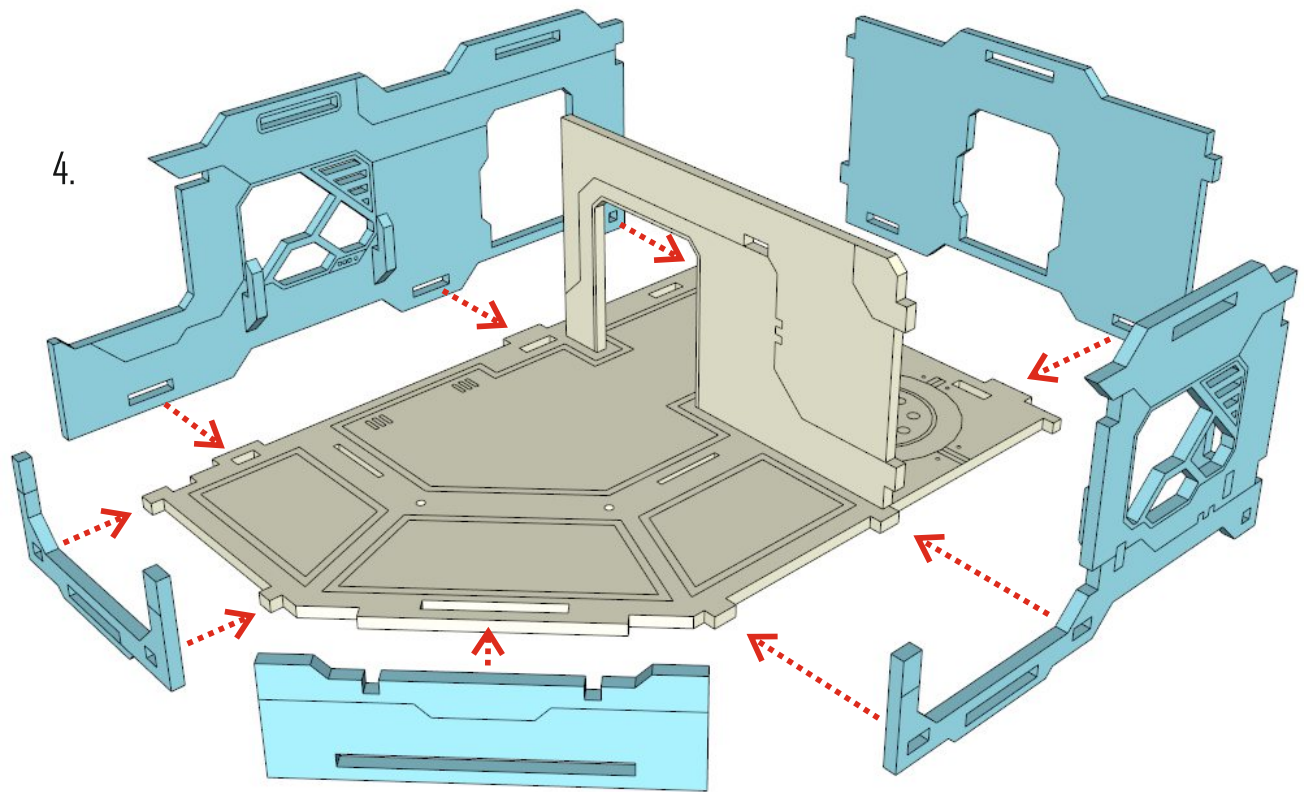


2.

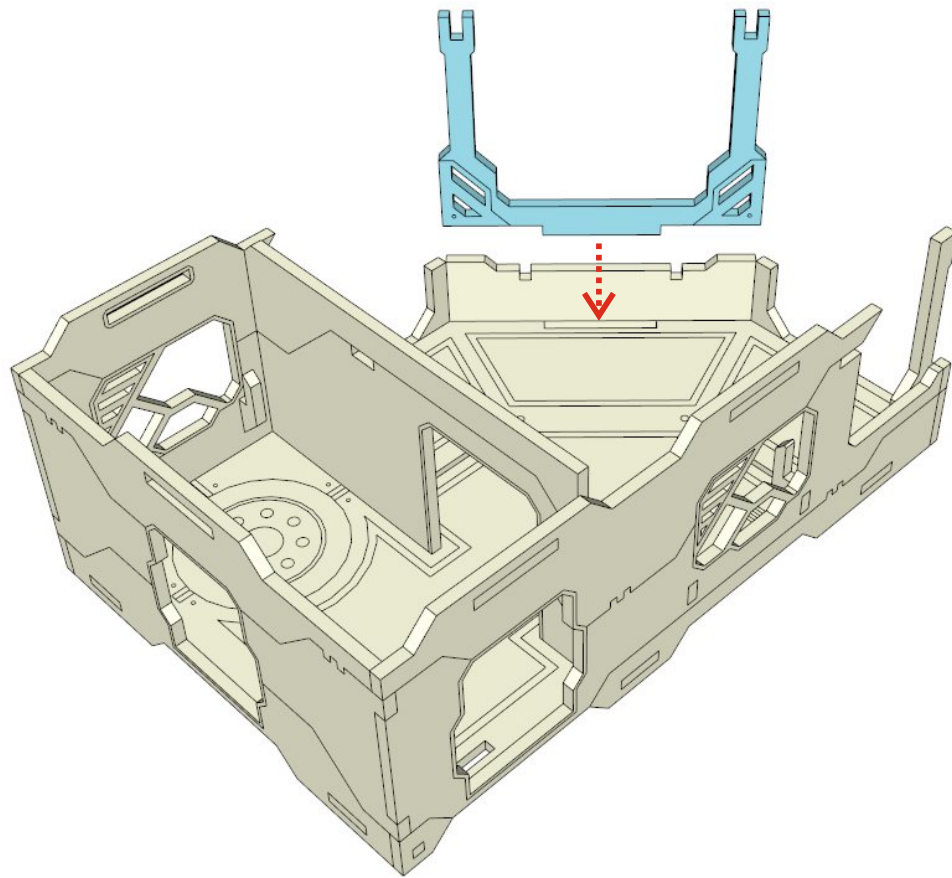


3.

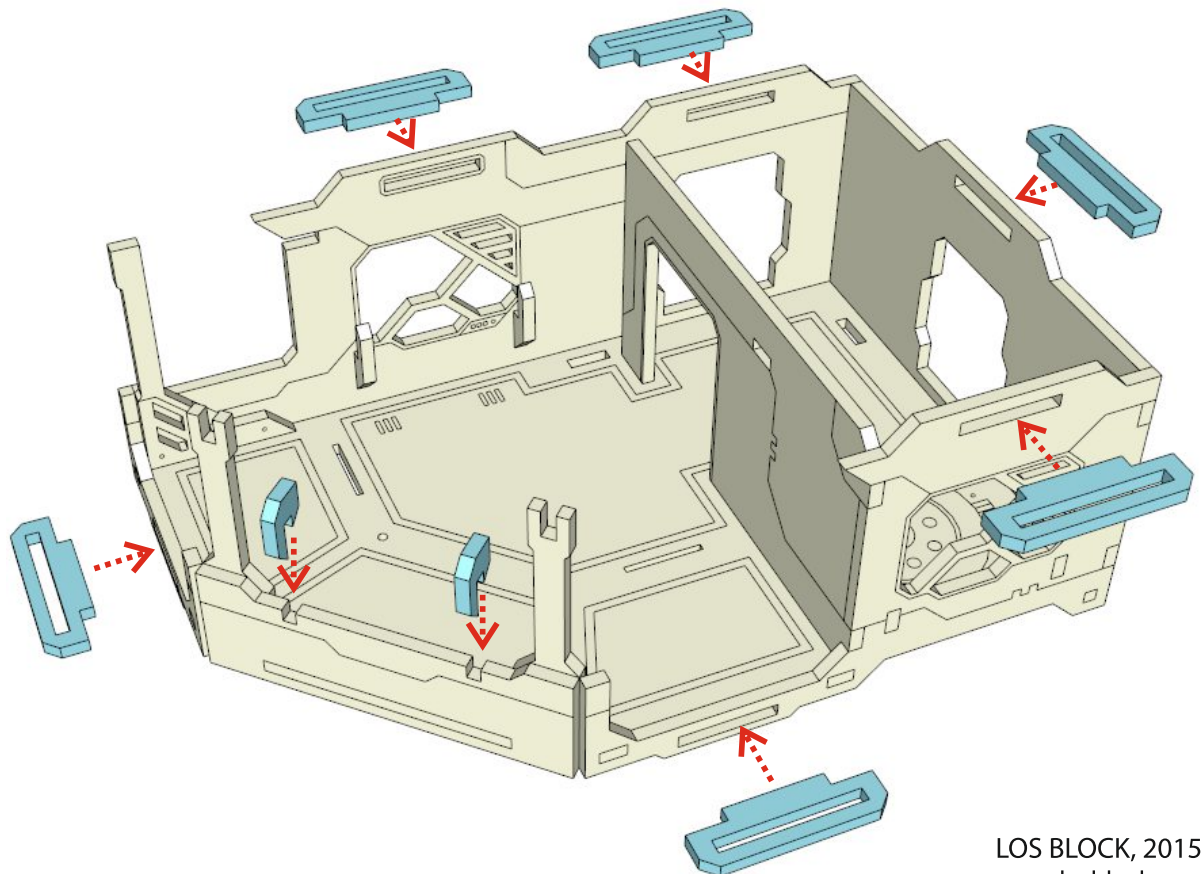




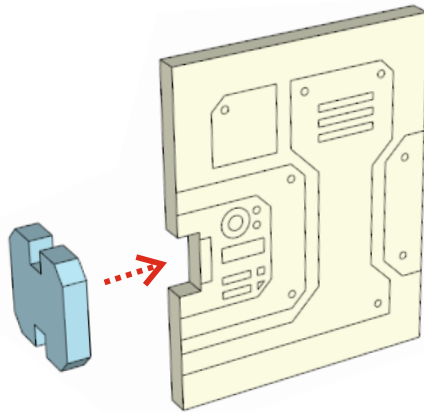
6.



7.

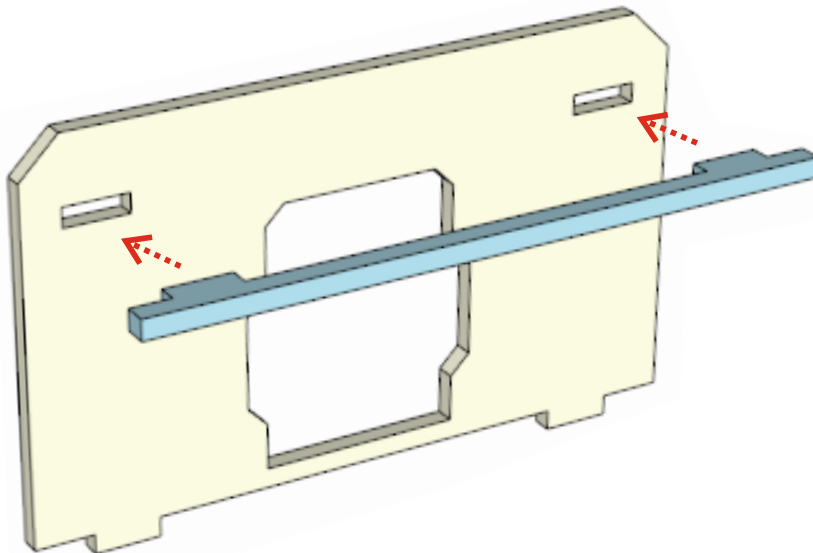


8.

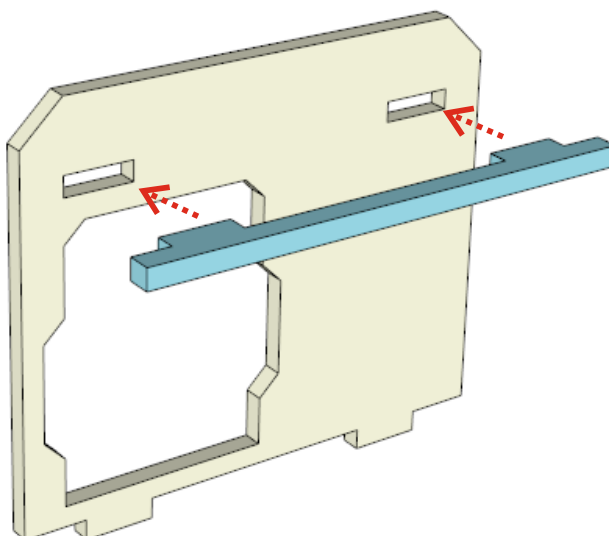


Repeat this action
for every door.

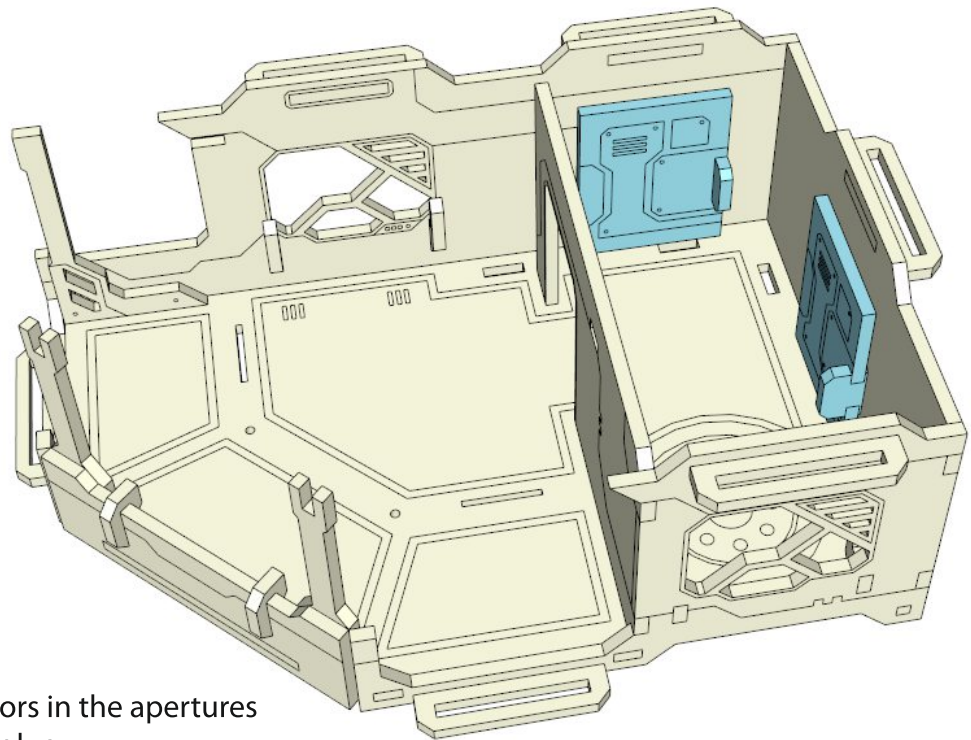
9.



10.

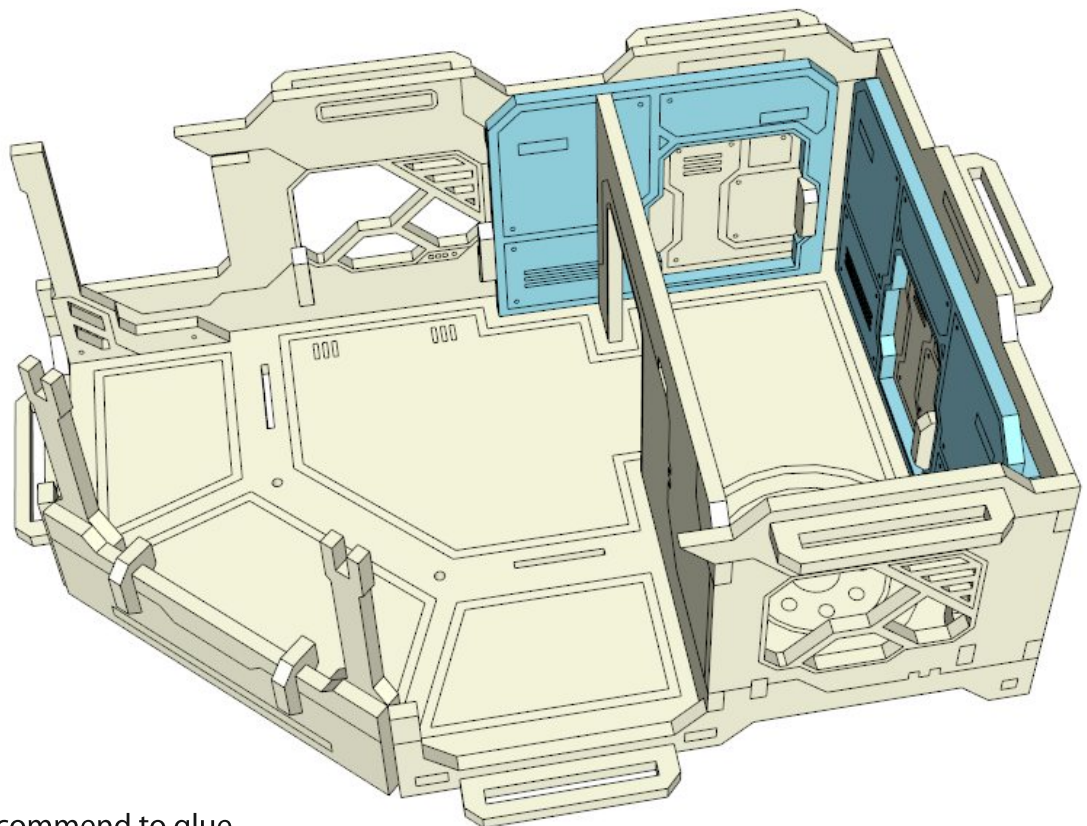


11.



Place doors in the apertures without glue.

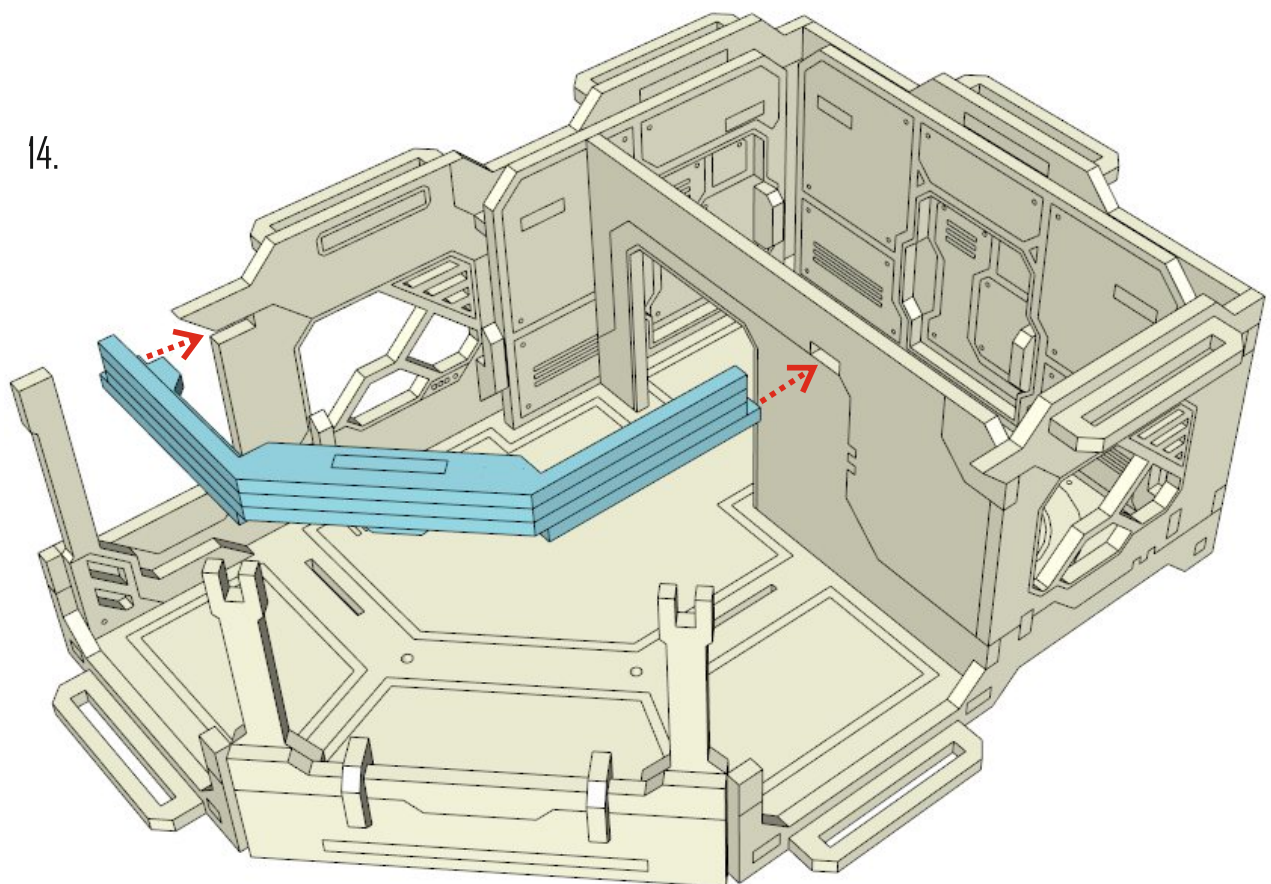
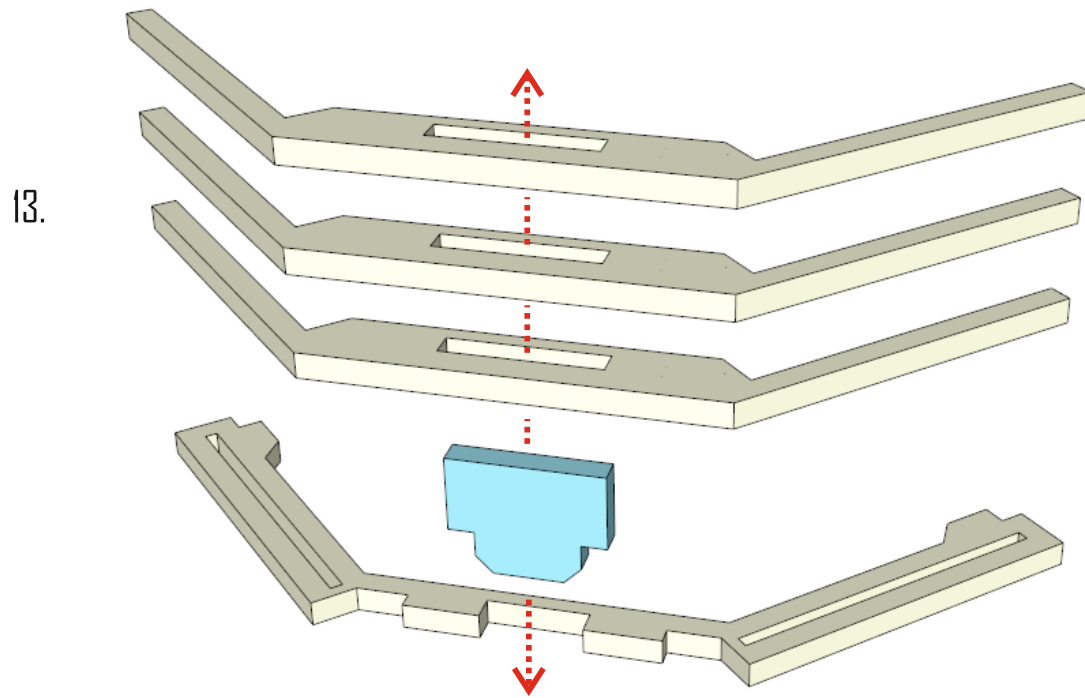
12.

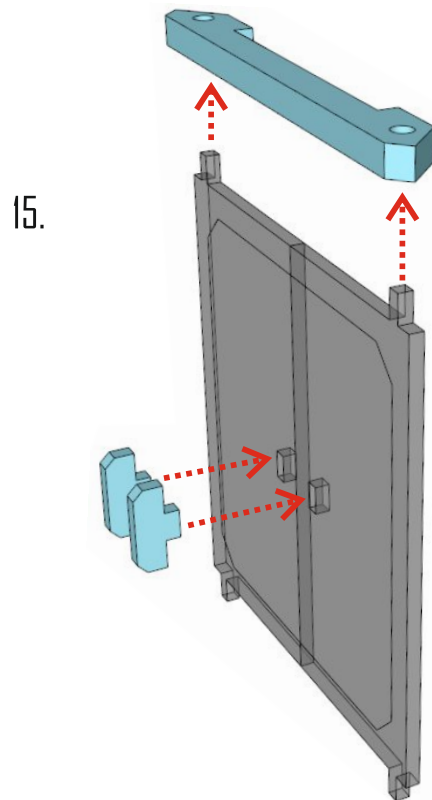


We are recommend to glue this parts after painting.

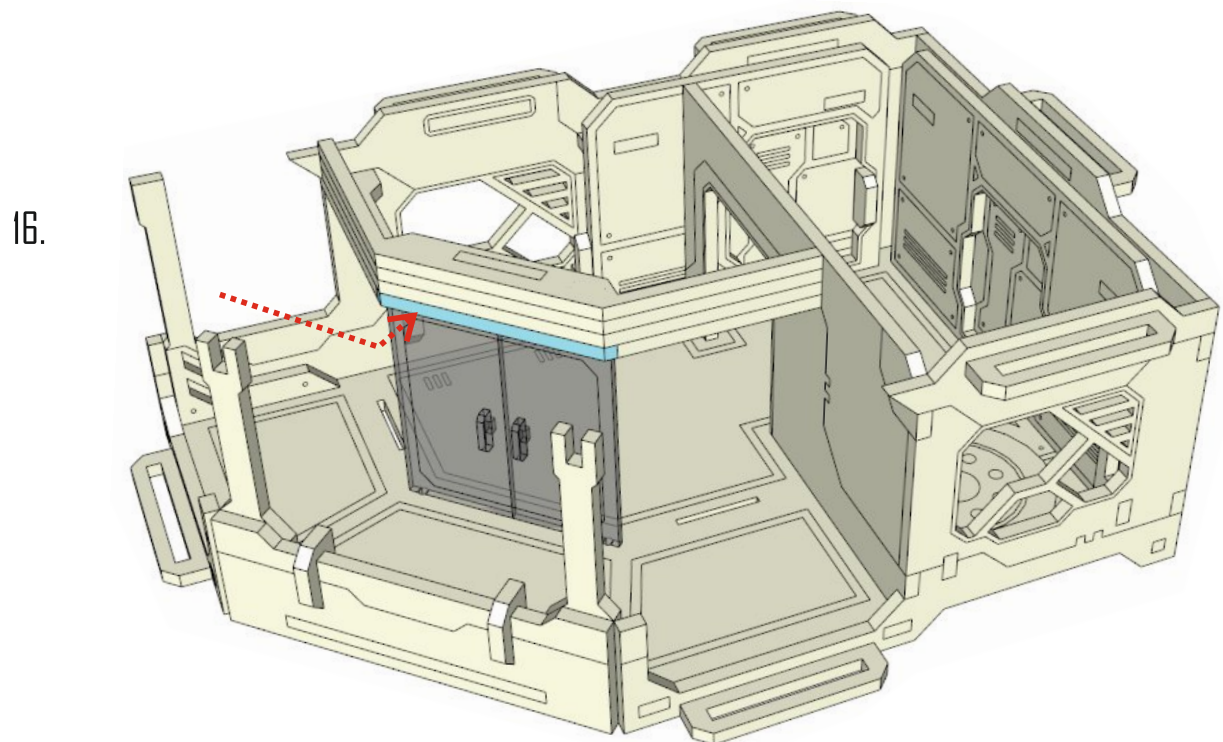


Be sure that doors are moving freely.





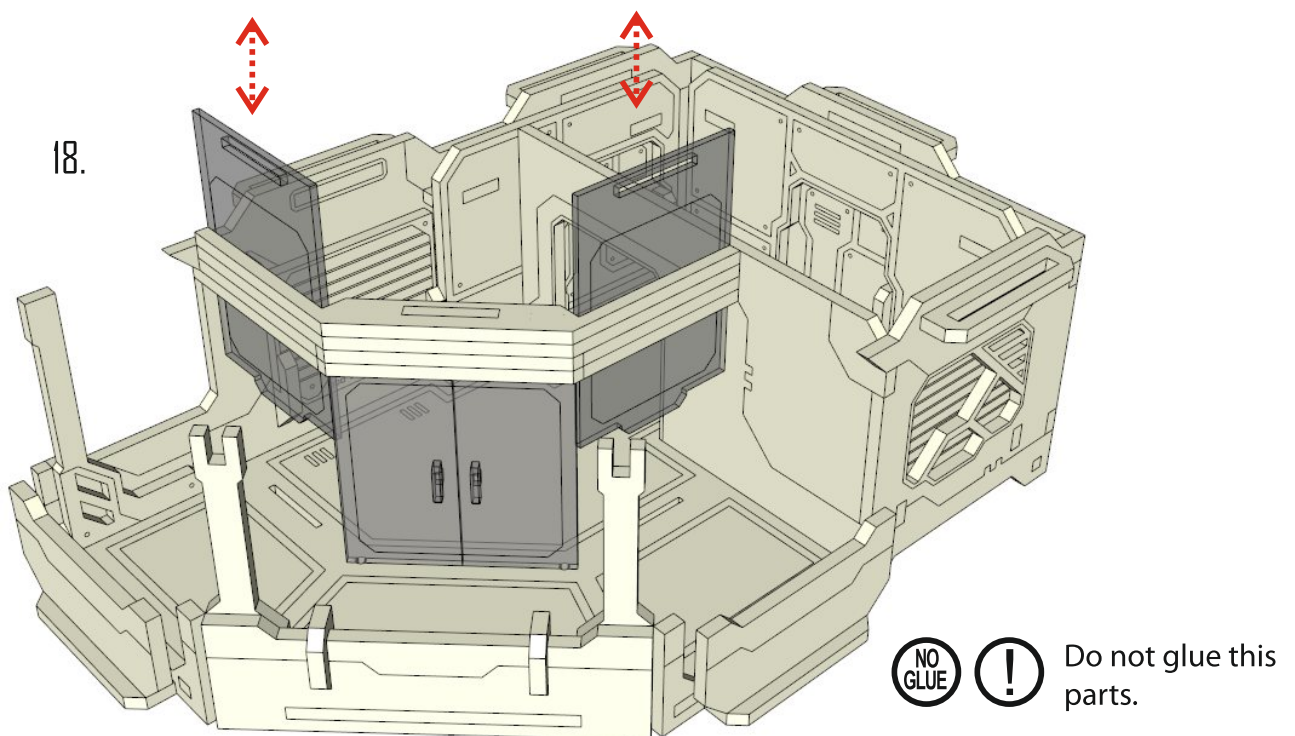
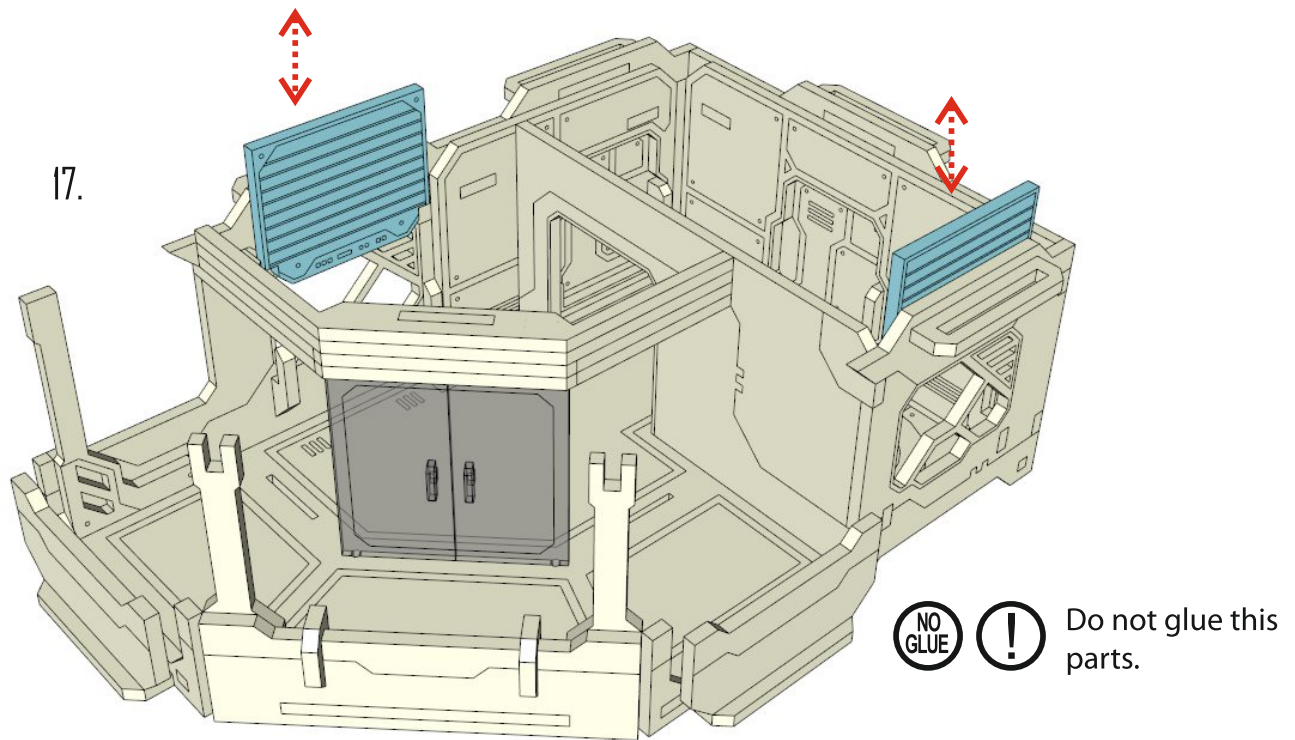
Do not use glue.
Doors should rotate freely.



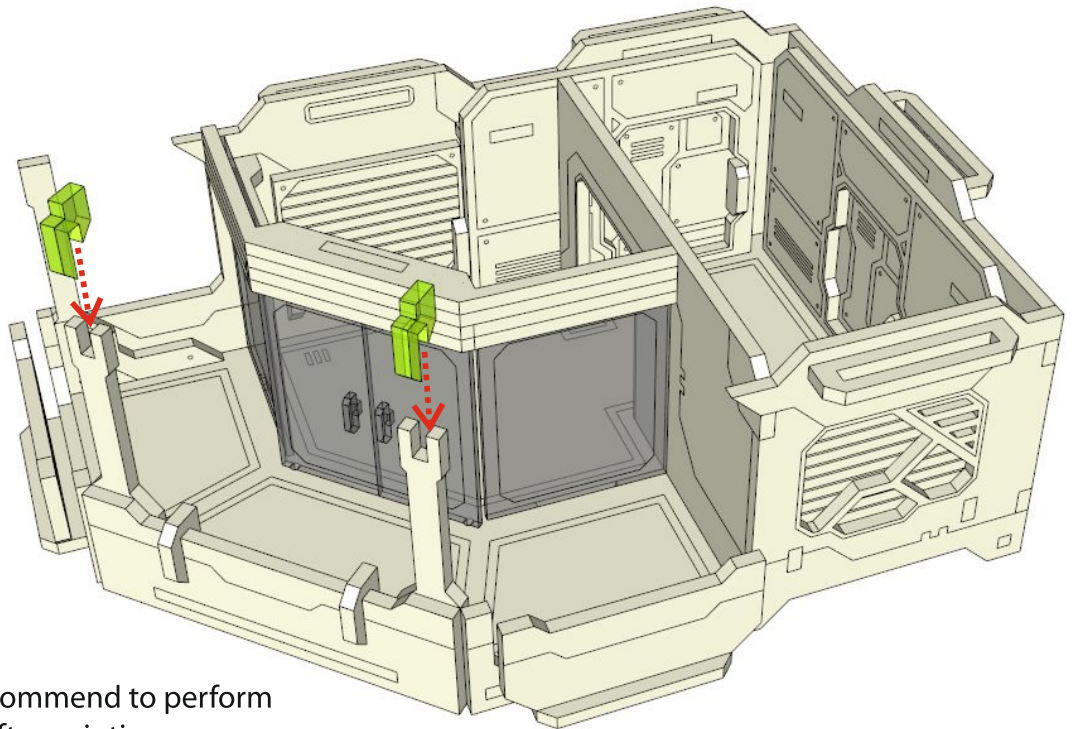
Glue only the marked part.
Doors should rotate freely.



We are recommend to perform
this step after painting.

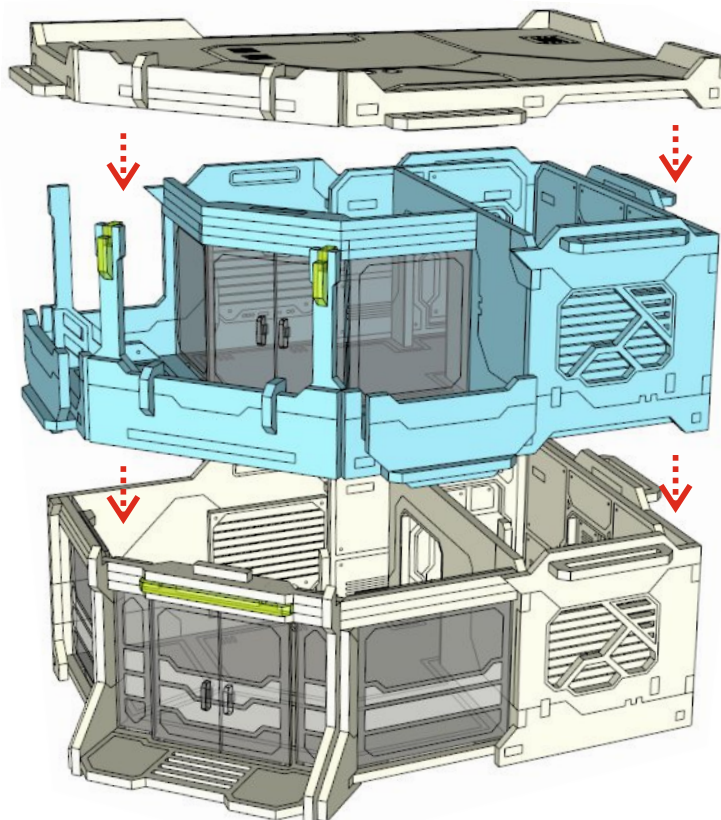


19.



! We are recommend to perform this step after painting.

20.



NO
GLUE

!

Do not glue it to the building.