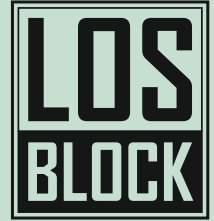
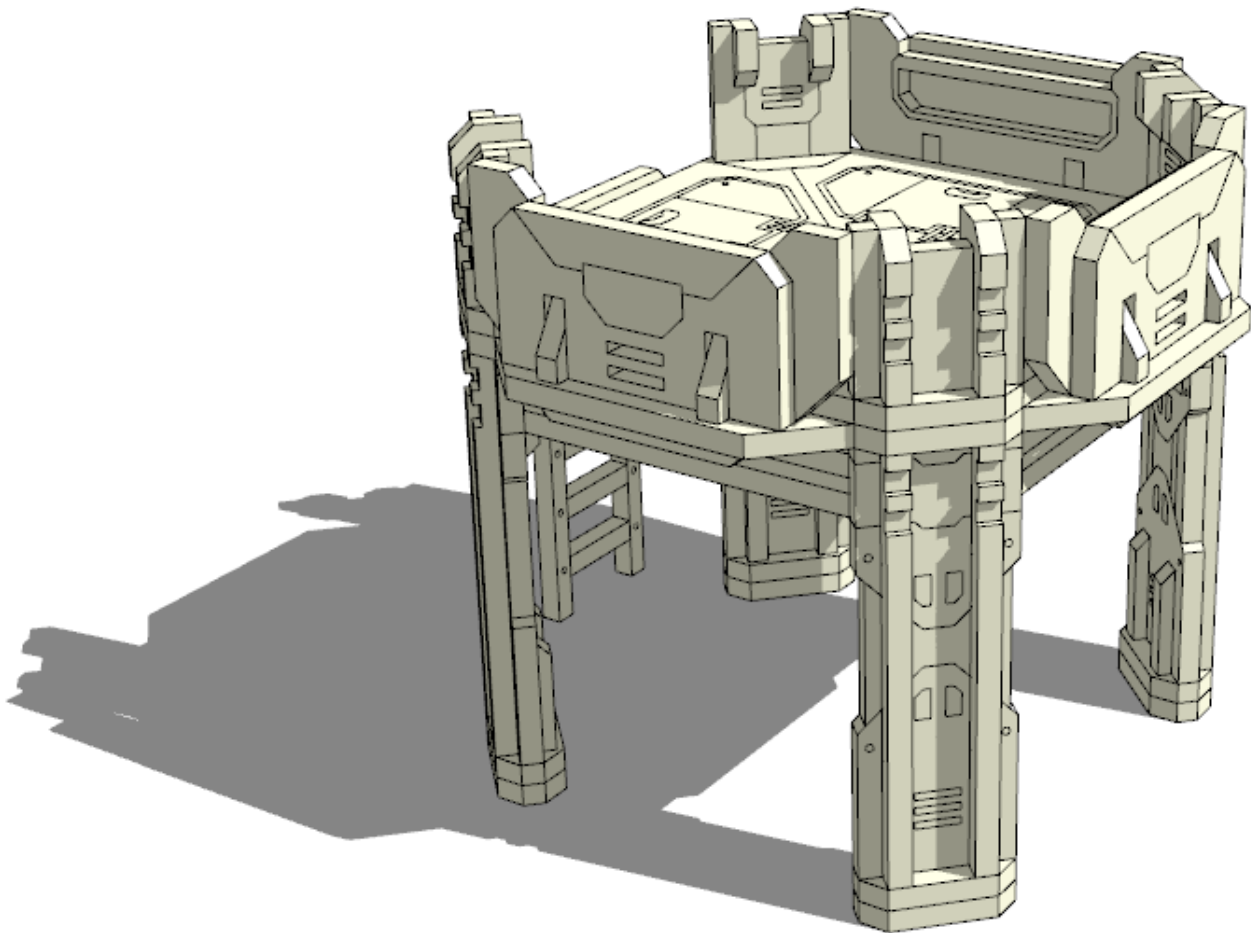


# Skywalk Crossing

construction manual



wargame scenery  
&  
accessories



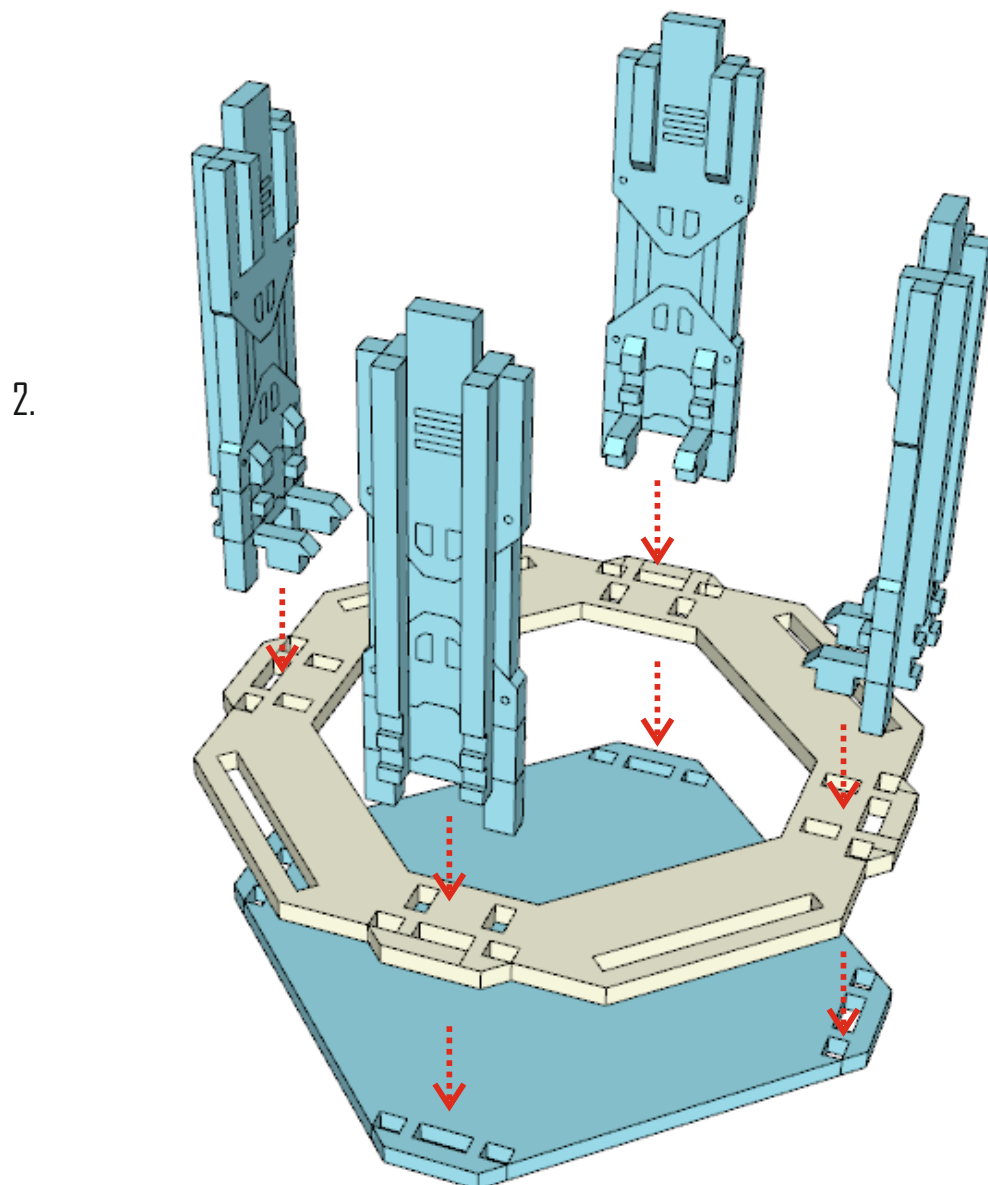
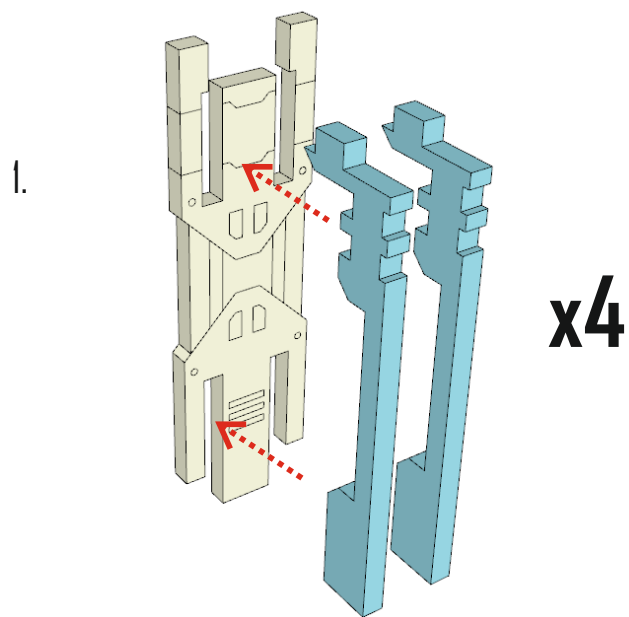
Material: HDF, methacrylate

Push details from the form and clear the places where it were connected with model knife or flint-paper.  
Be sure that protection cover on the methacrylate parts (if they are included) is removed.

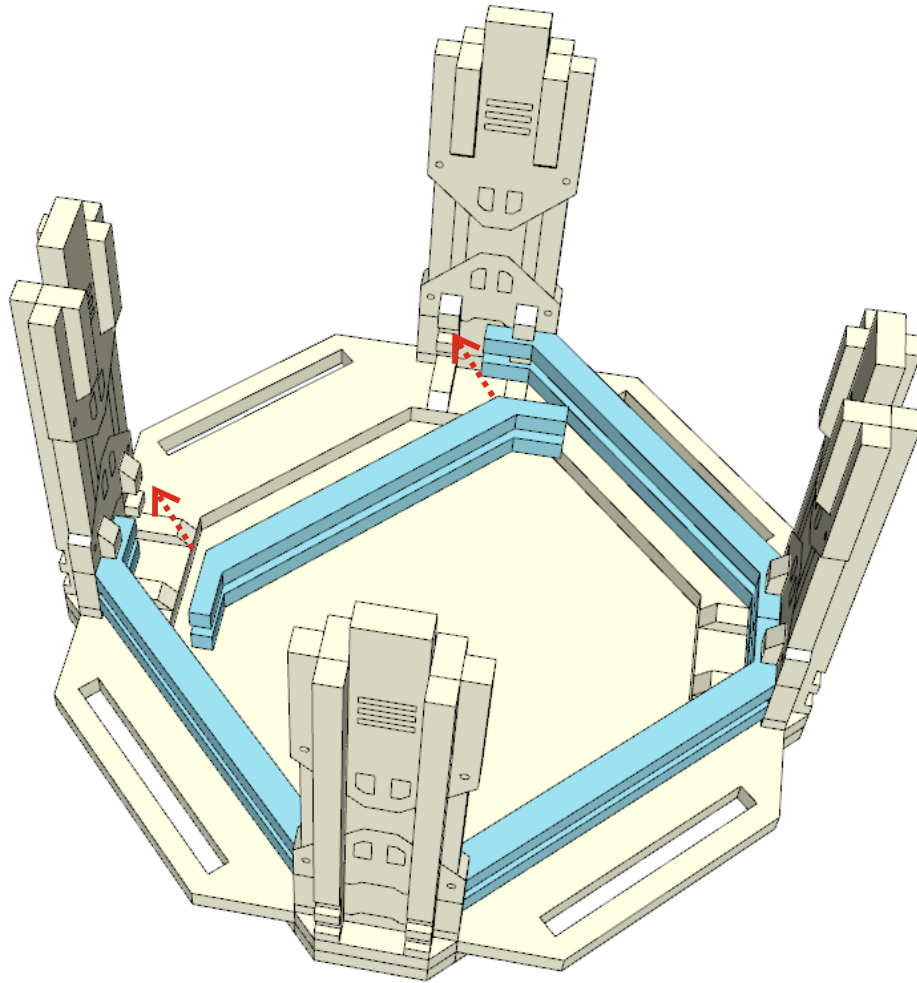
We are recommend to use PVA glue or any other glue for wood.  
For methacrylate parts you can use super-glue or its equivalents.  
If you have any questions write us - [store@losblock.com](mailto:store@losblock.com)

Small parts. Not recommended for children under 8 years.  
Real object can slightly differ from presented in this manual.

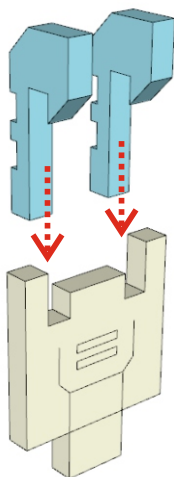
© LOSBLOCK, 2018  
[www.losblock.com](http://www.losblock.com)



3.

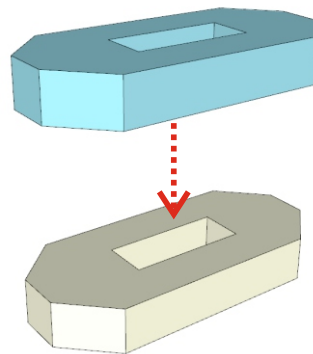


4.



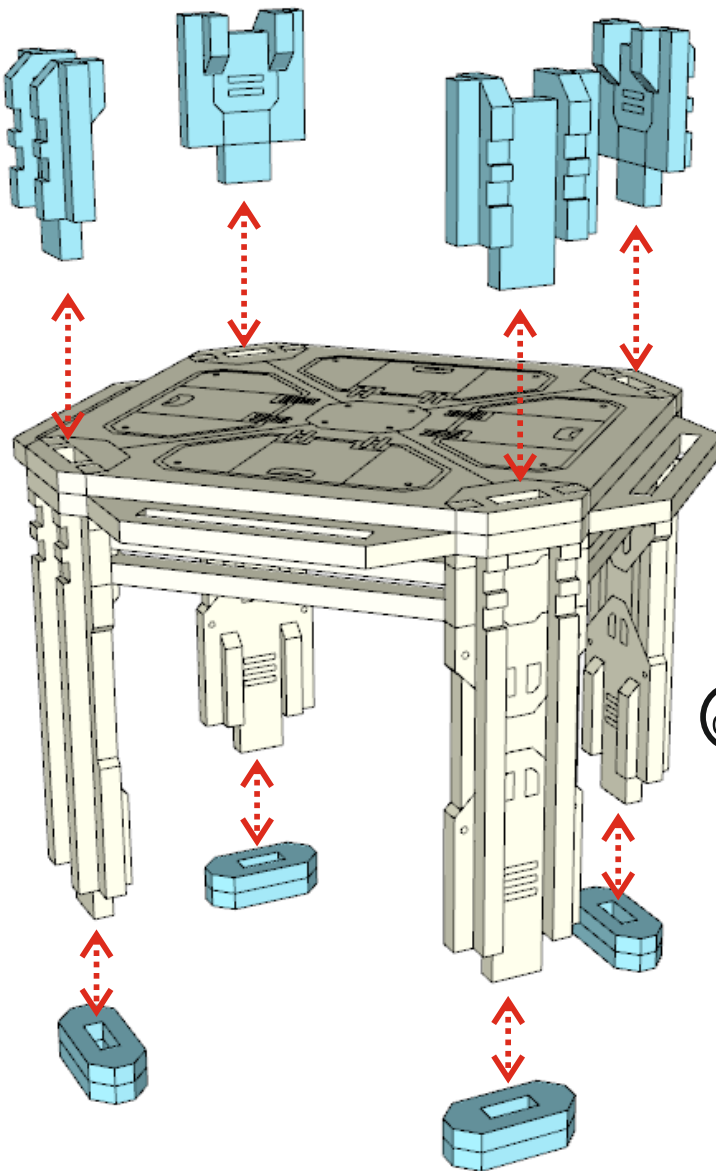
**x4**

5.



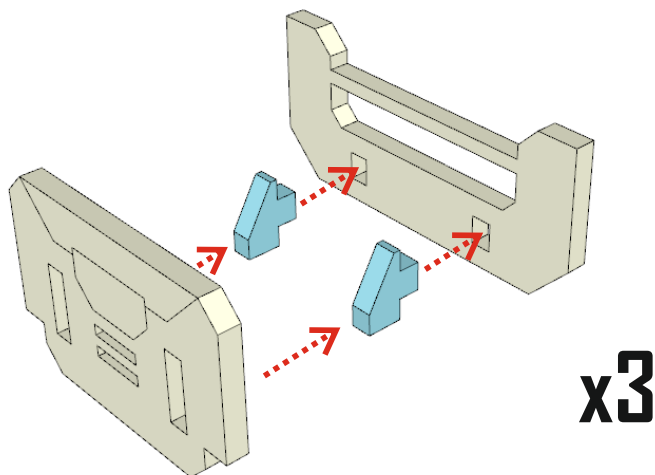
**x4**

6.

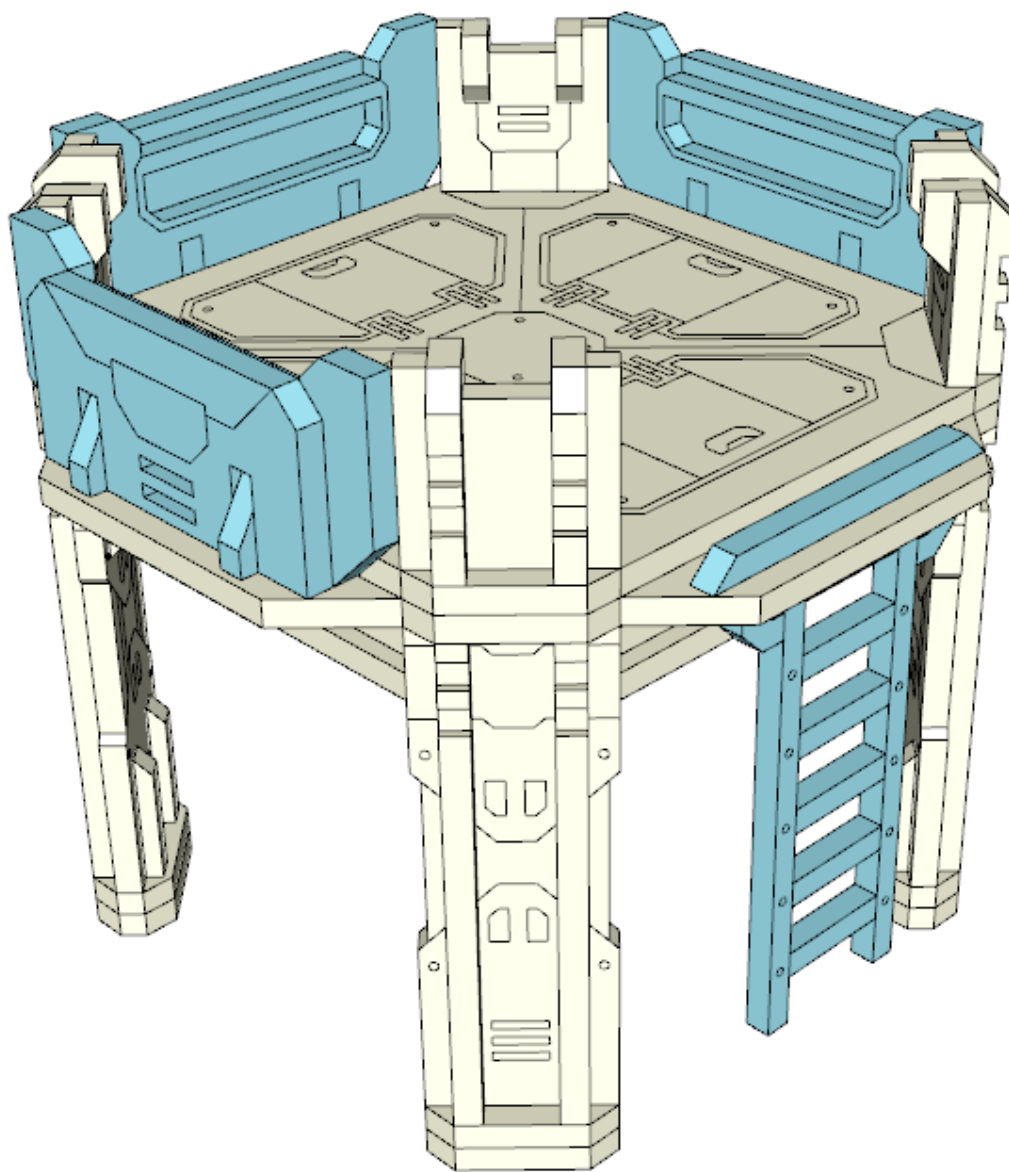


Do not glue this details.  
They must in and out freely.

7.



8.



Do not glue this details.  
They must in and out freely.



You can use passages from  
Skywalks or Hallways series  
instead of borders and ladders.