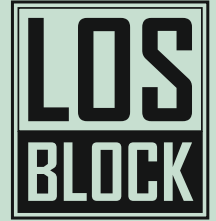


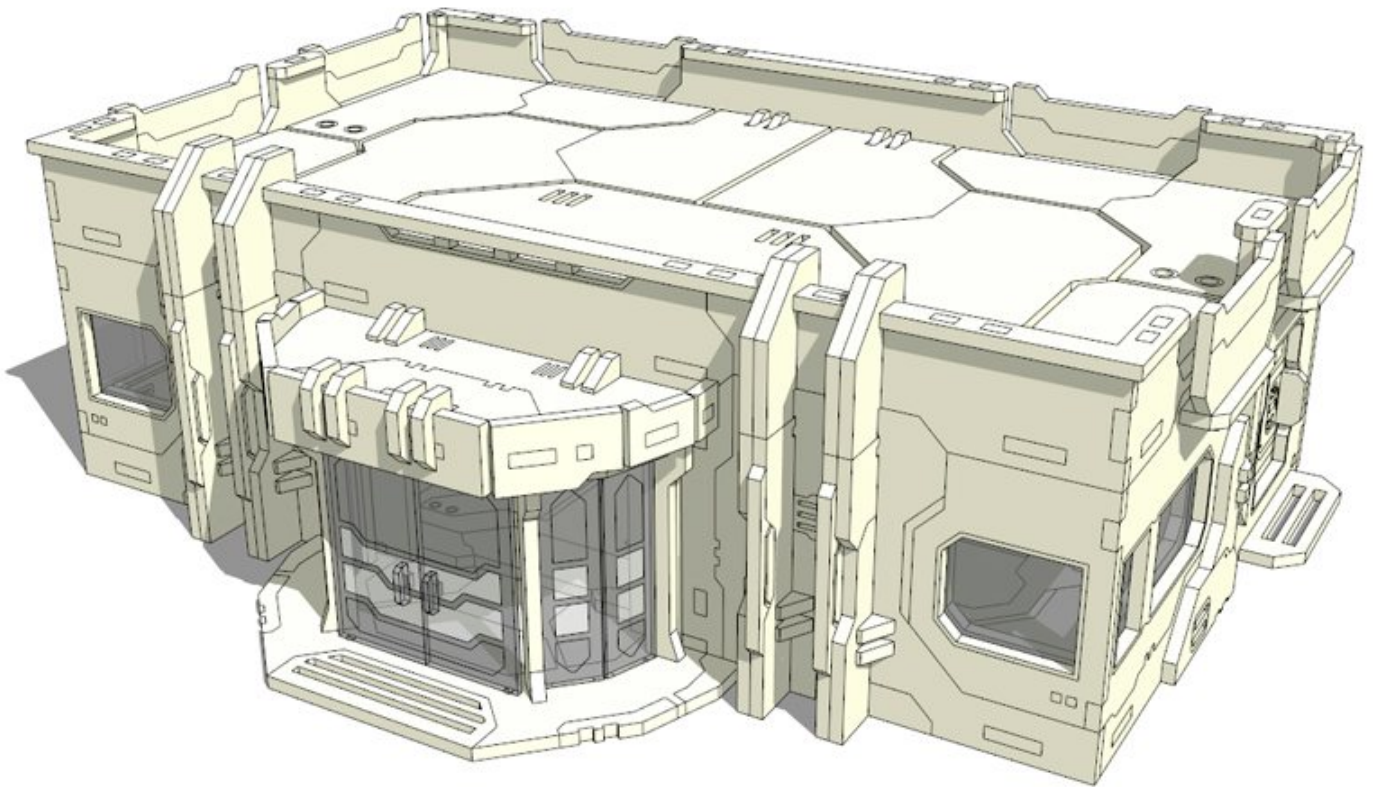
Offices

Main floor

construction manual



wargame scenery
&
accessories



Material: methacrylate, HDF

Remove the protection cover from details before construction.

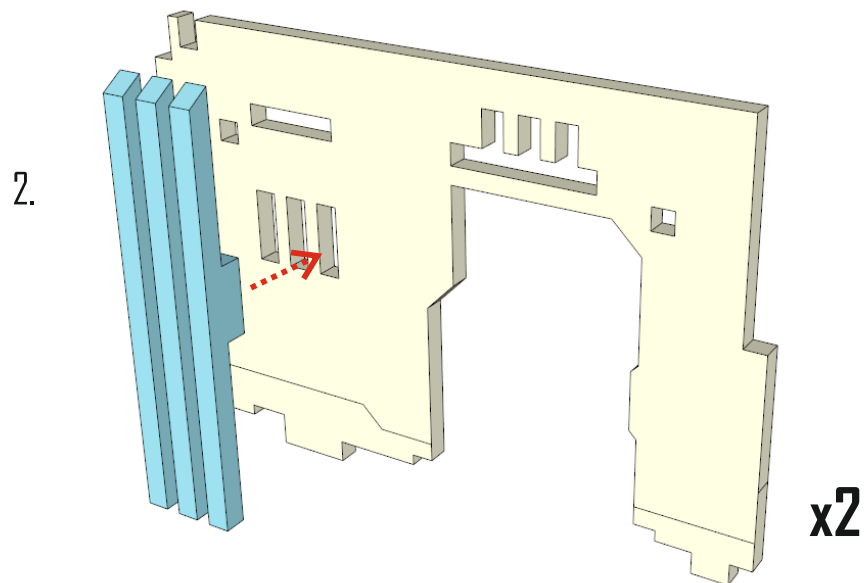
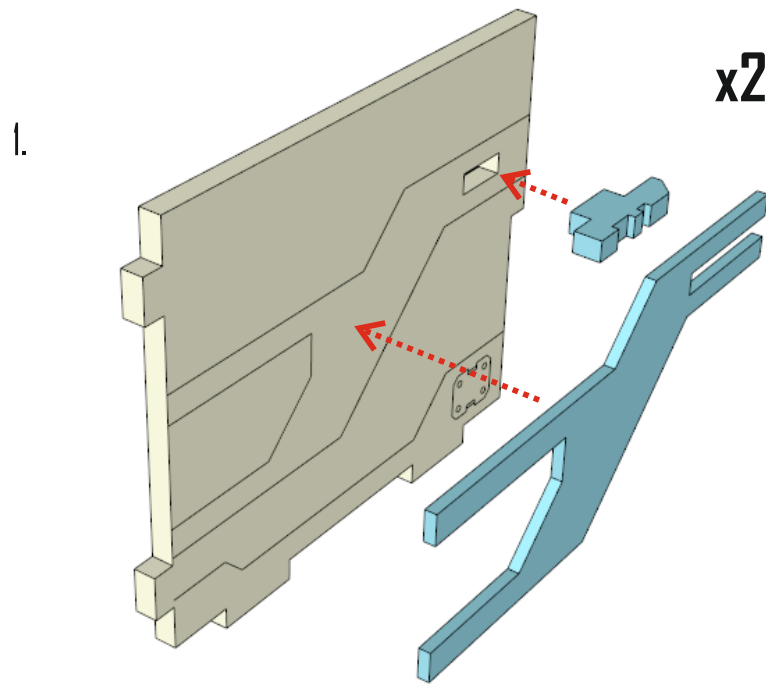
We recommend to use the SuperGlue or its equivalents.

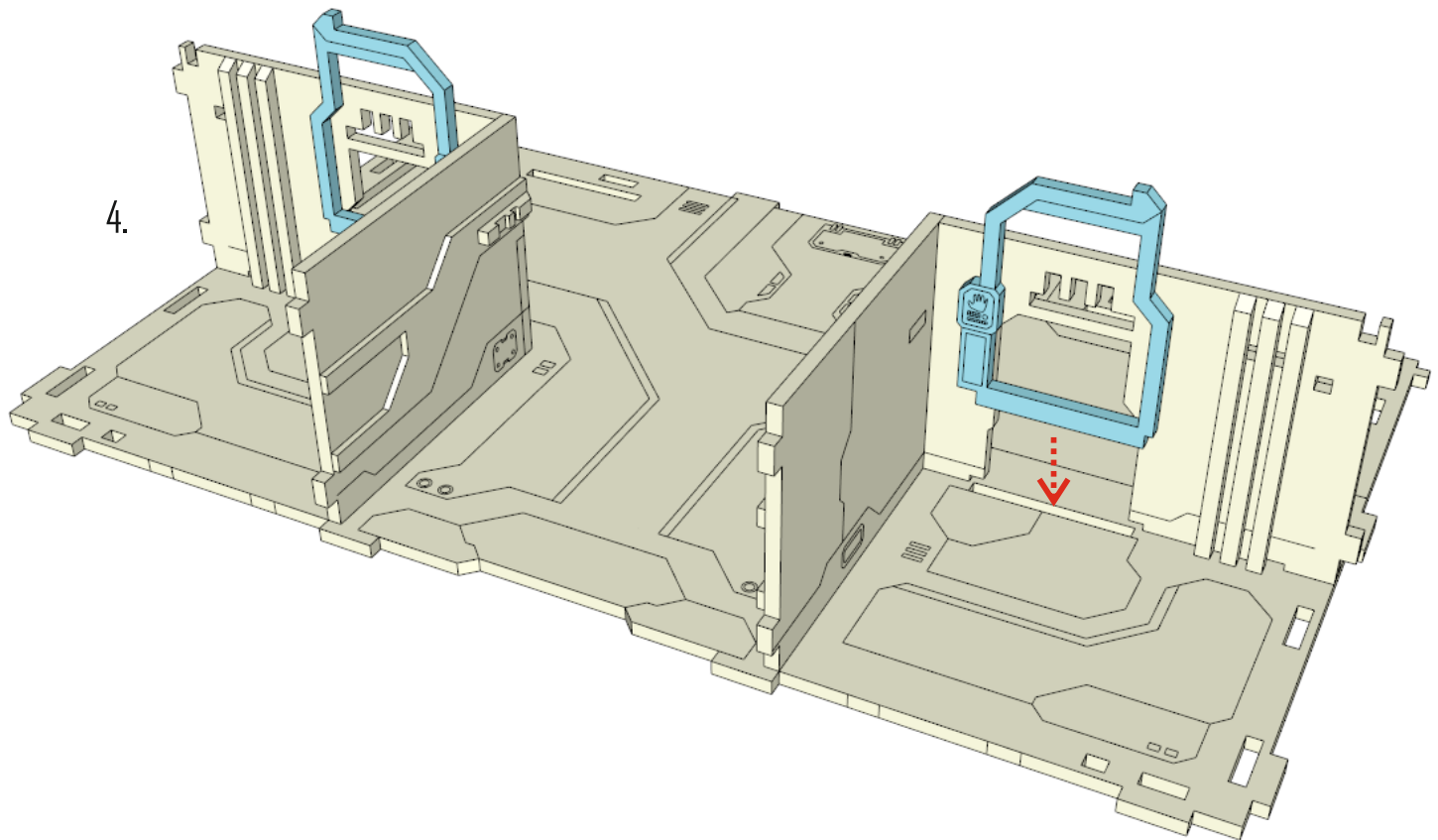
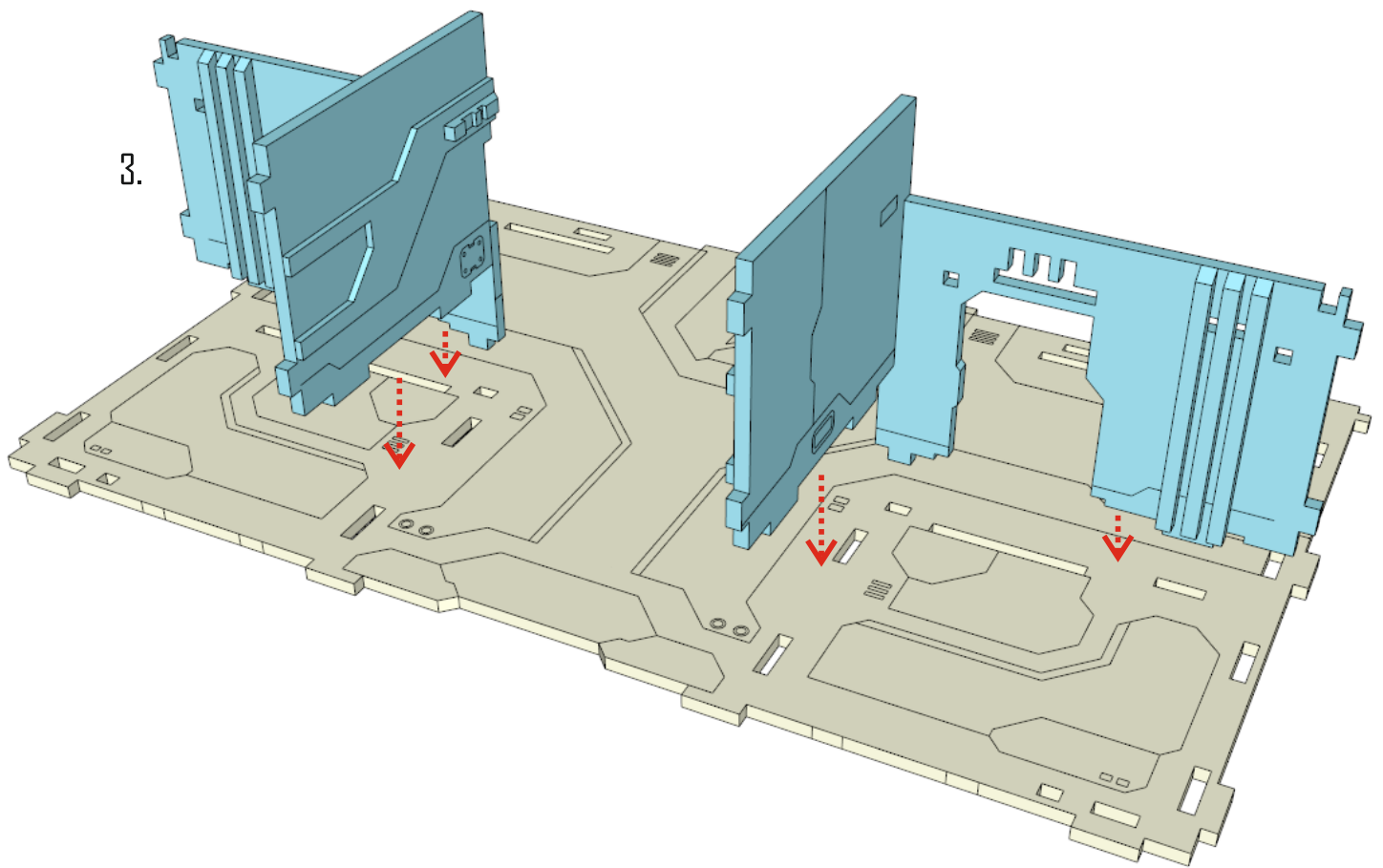
Degrease all surfaces before painting.

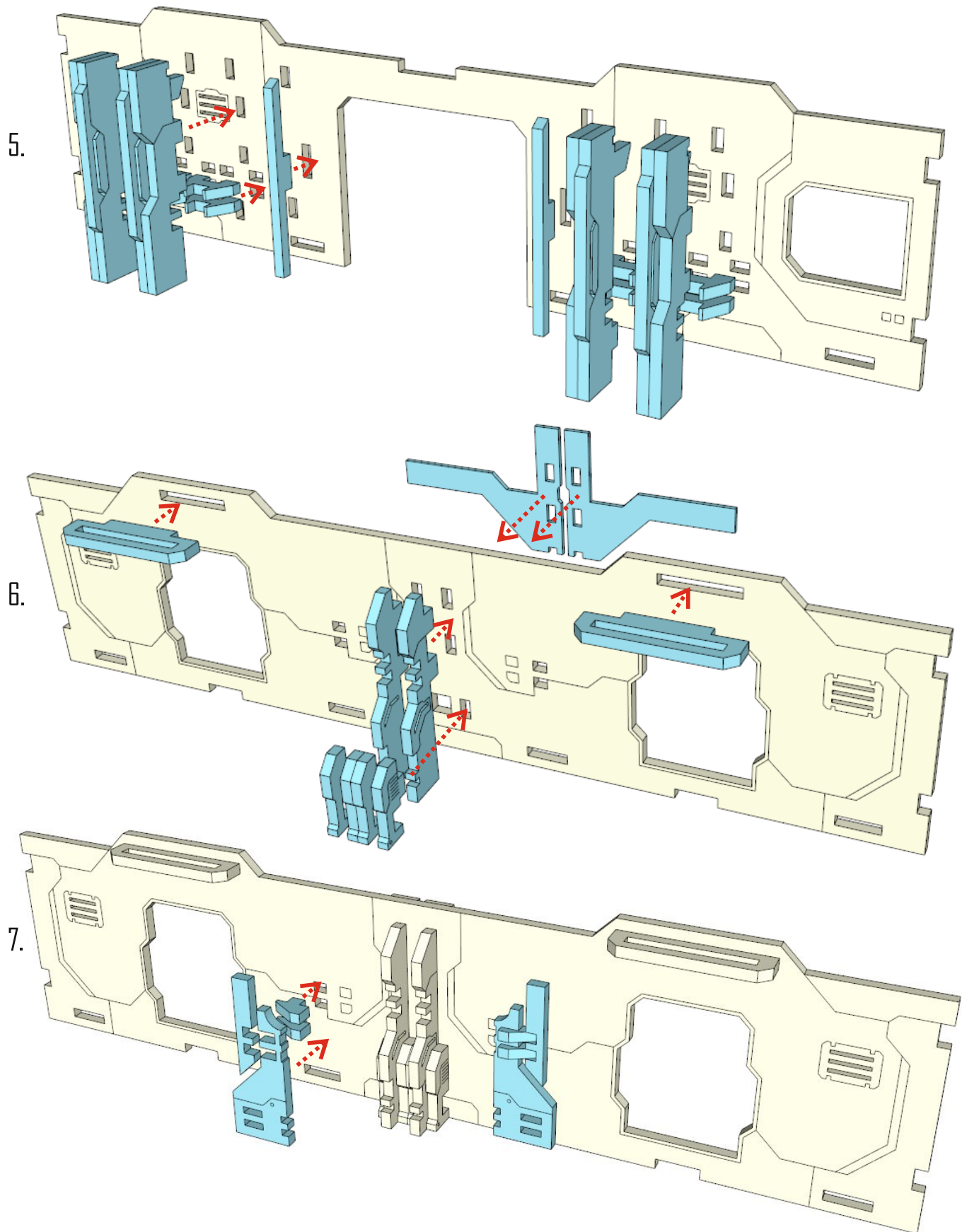
If you have any questions write us - store@losblock.com

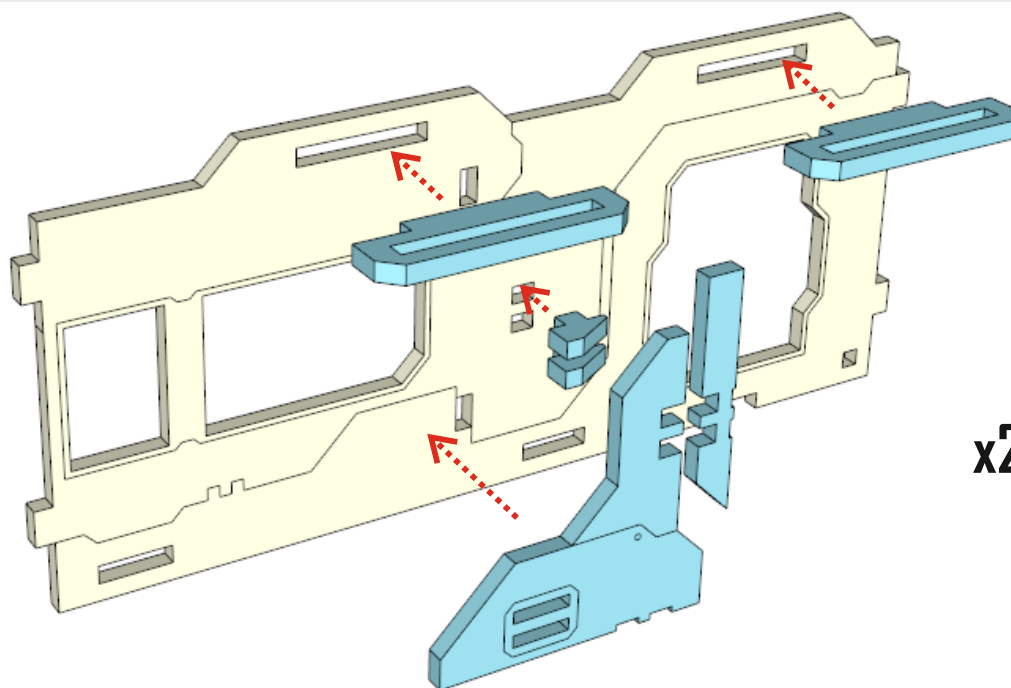
Small parts. Not recommended for children under 6 years.
Real object can slightly differ from presented in this manual.

© LOSBLOCK, 2017
www.losblock.com

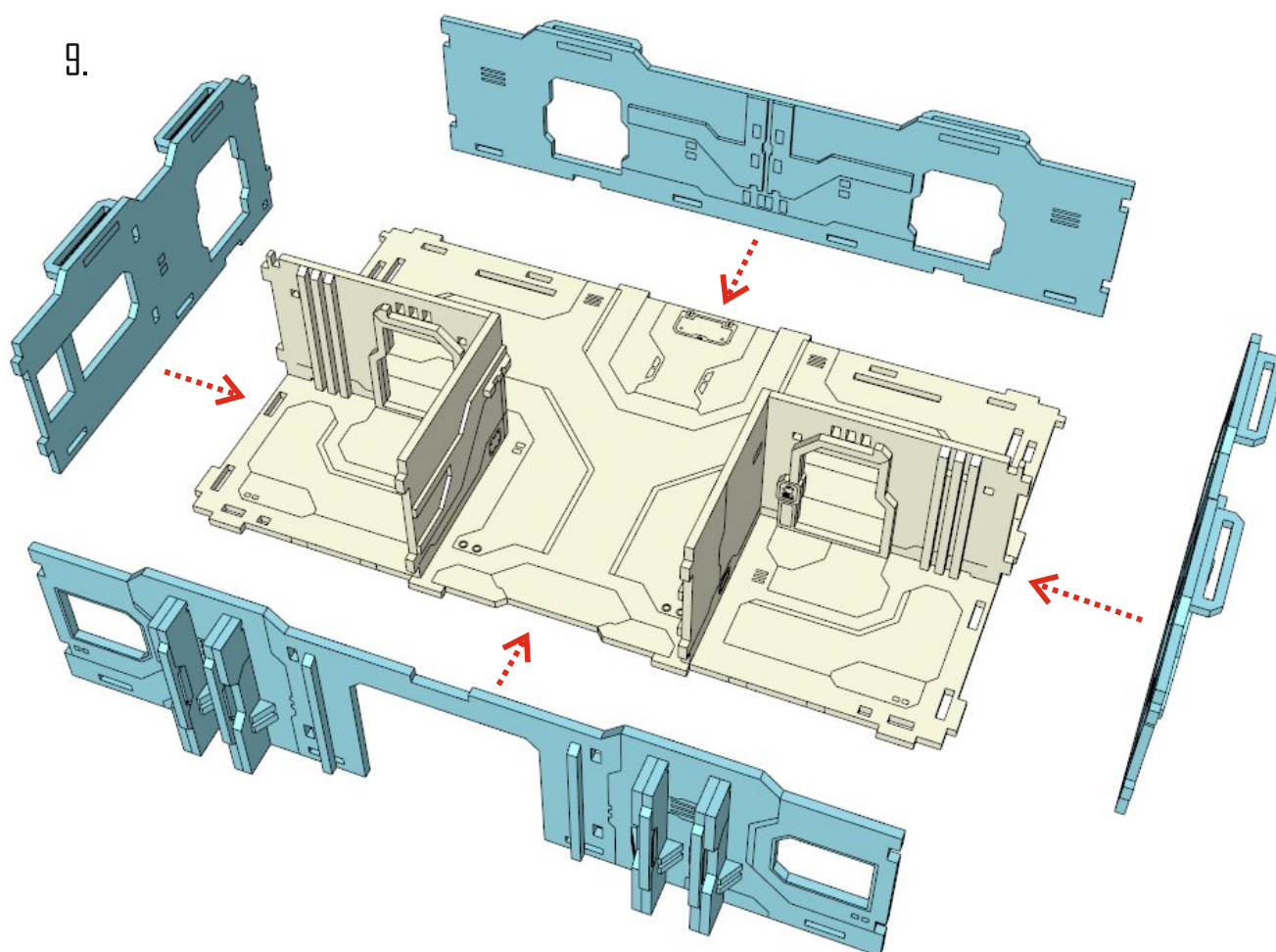




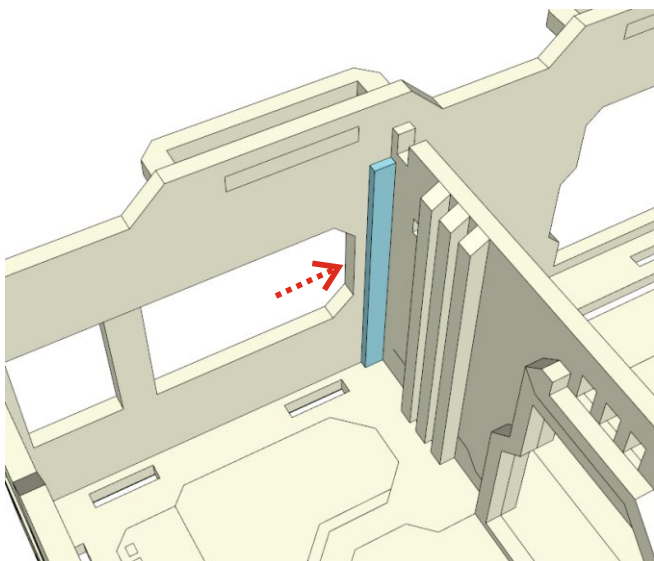




x2

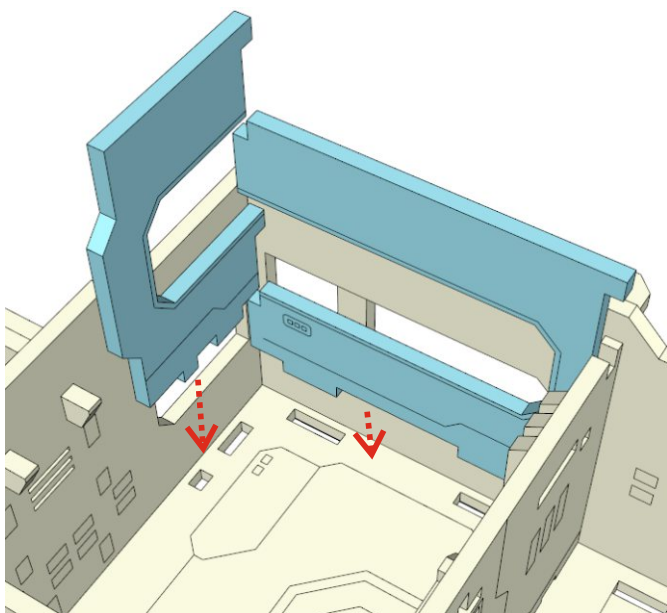


10.



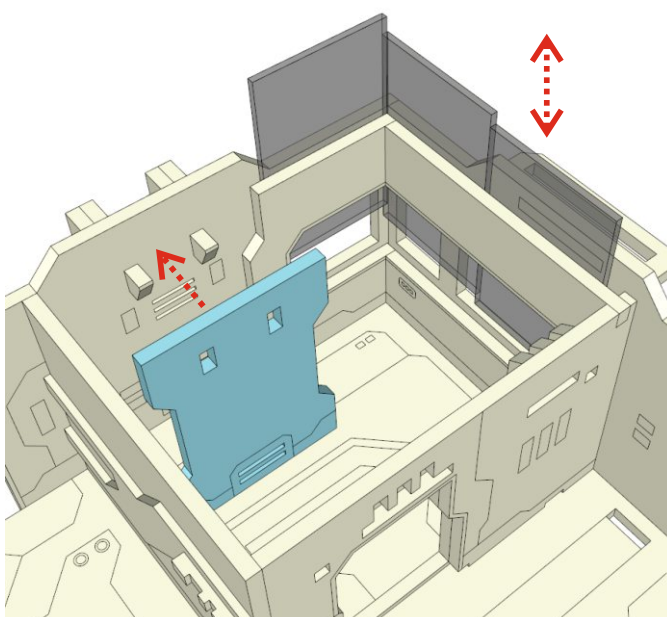
! Repeat symmetrically.

11.



! Repeat symmetrically.

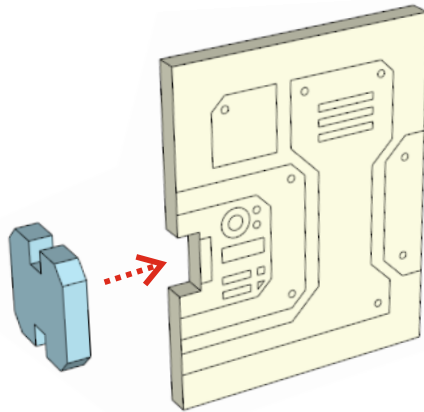
12.



! Repeat symmetrically.

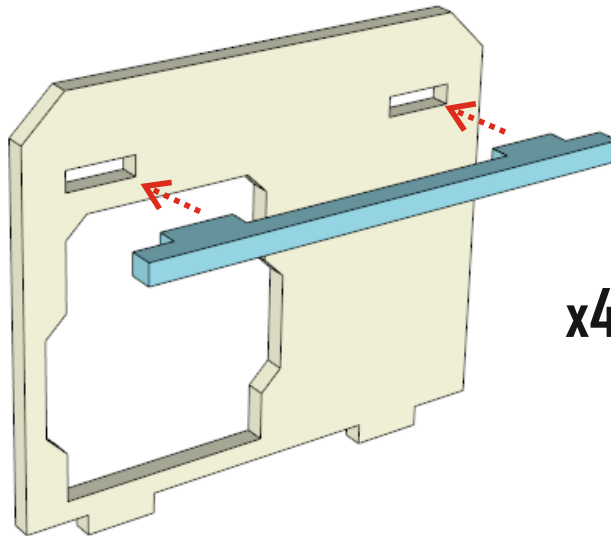
NO GLUE ! Do not glue transparent parts.

13.



x4

14.

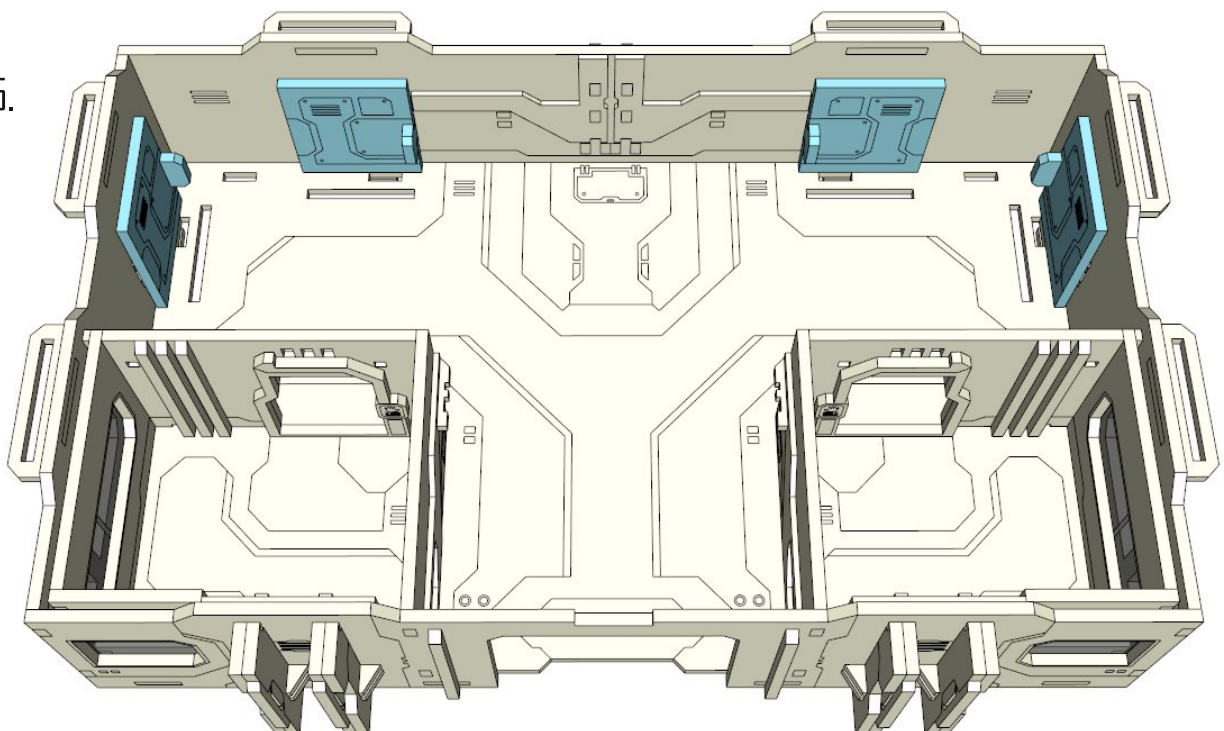


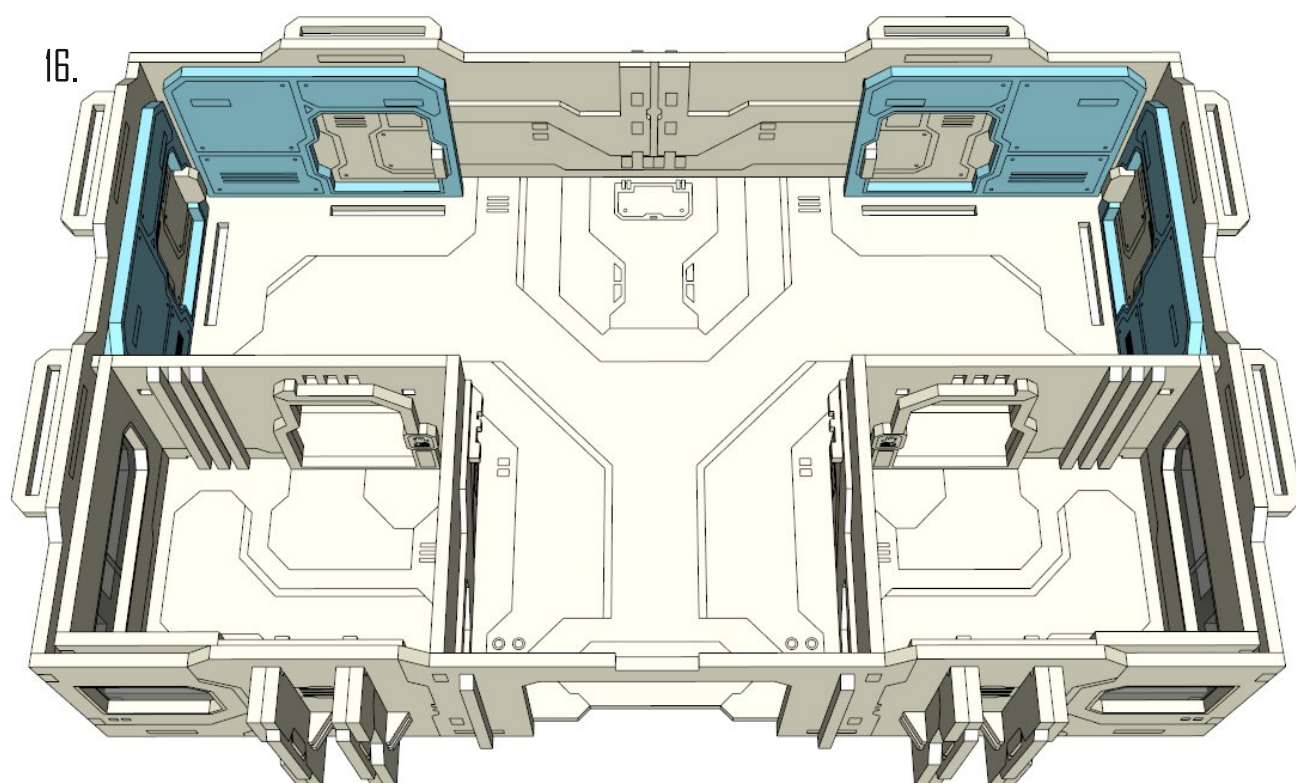
x4



Place doors in the apertures without glue.

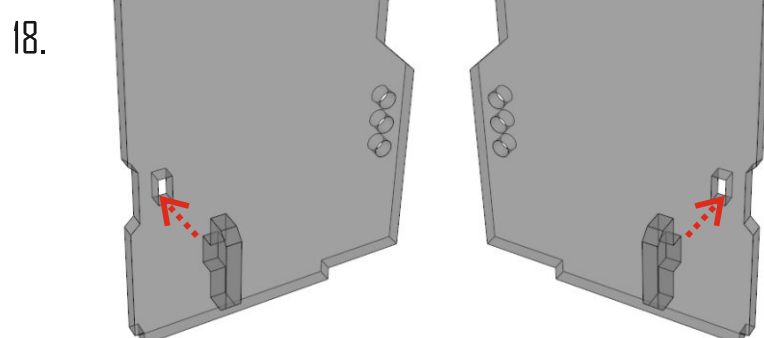
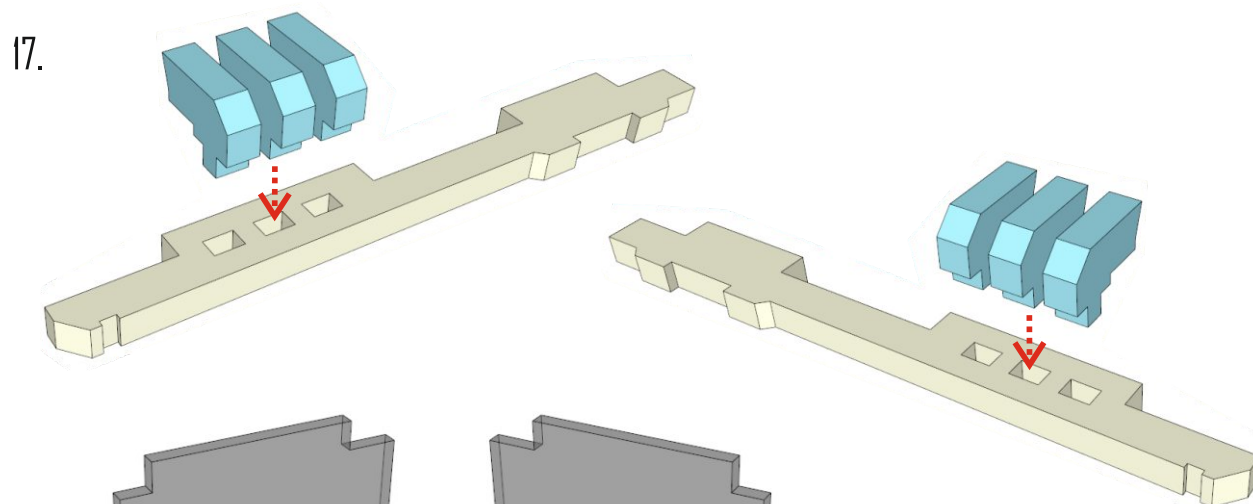
15.



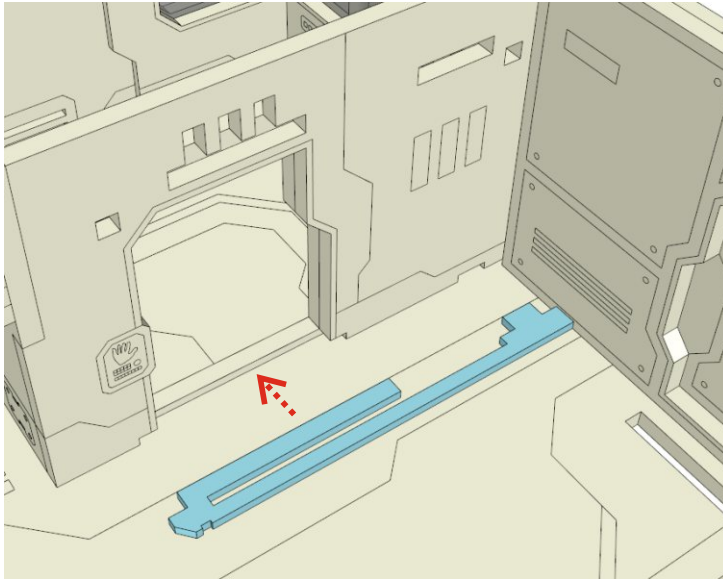


! We are recommend to glue this parts after painting.

! Be sure that doors are moving freely.

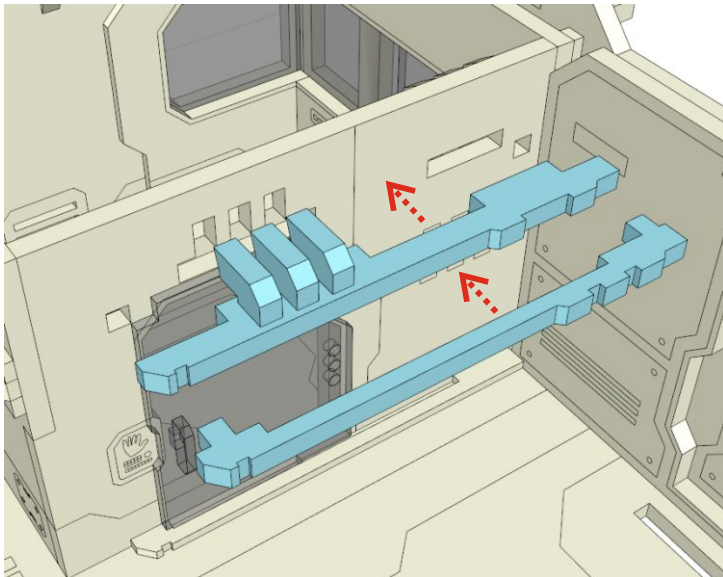


19.



! Repeat symmetrically.

20.

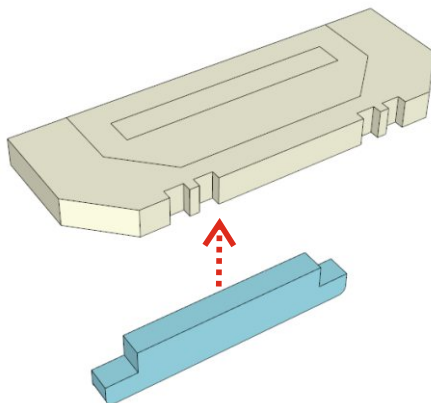


! Repeat symmetrically.

NO GLUE ! Place doors in the apertures without glue.

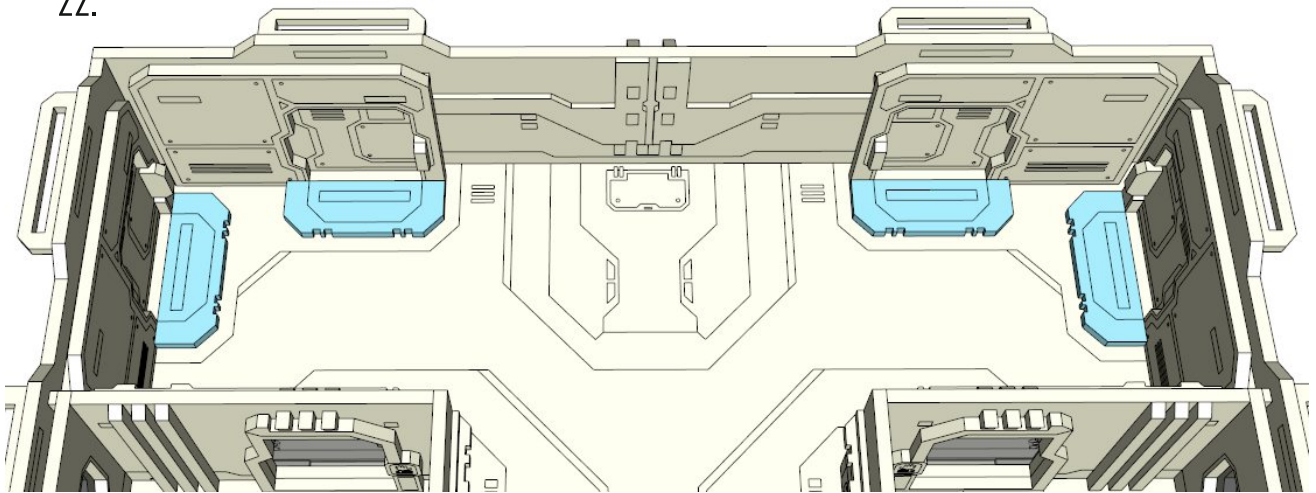
! We are recommend to glue this parts after painting.

21.



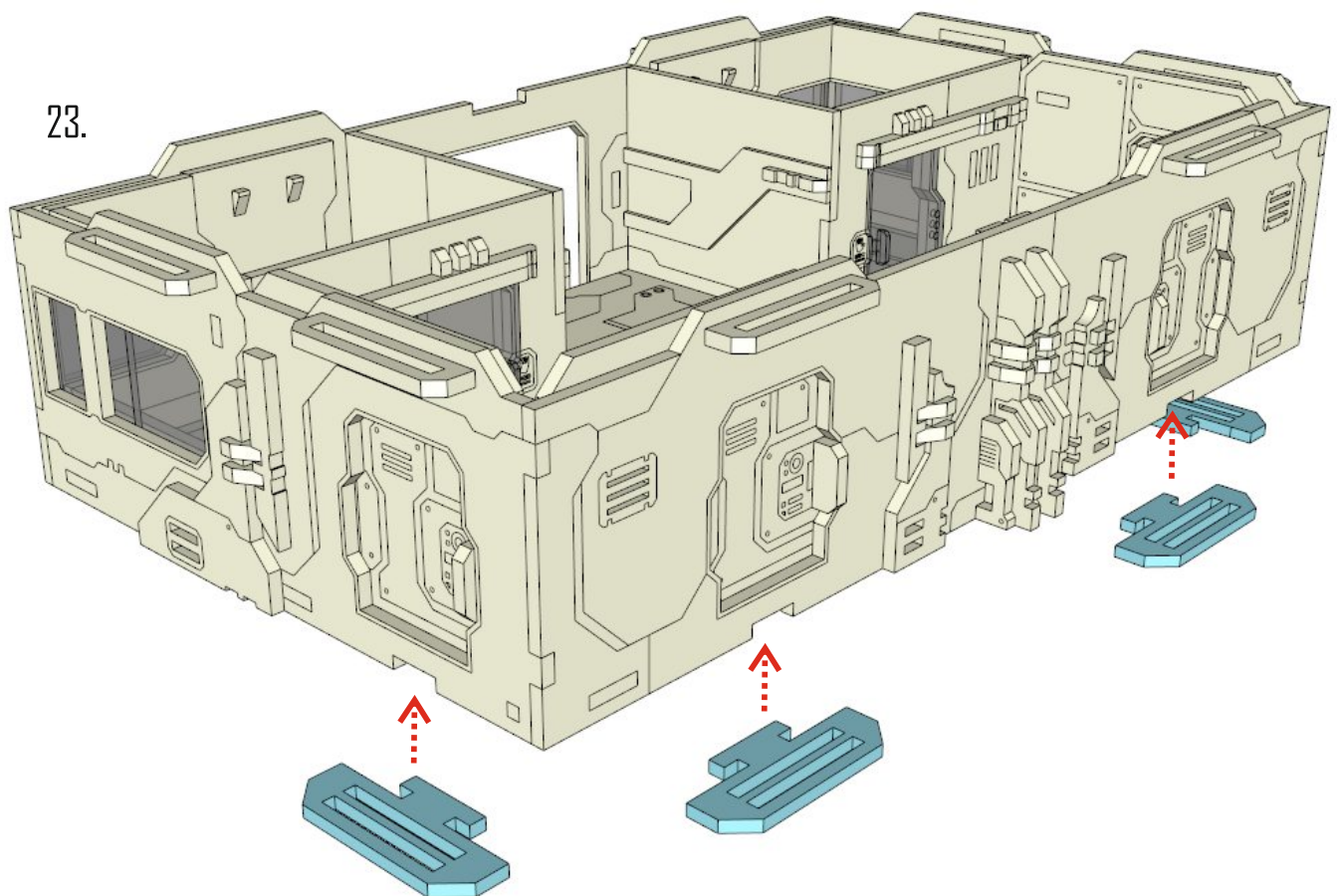
x4

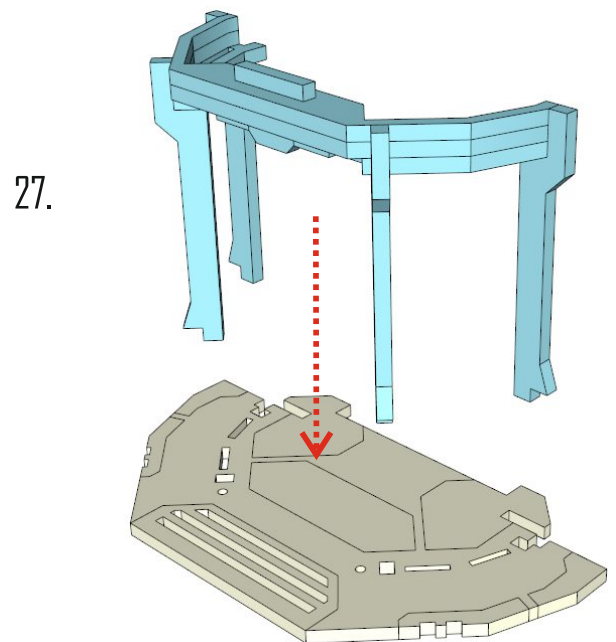
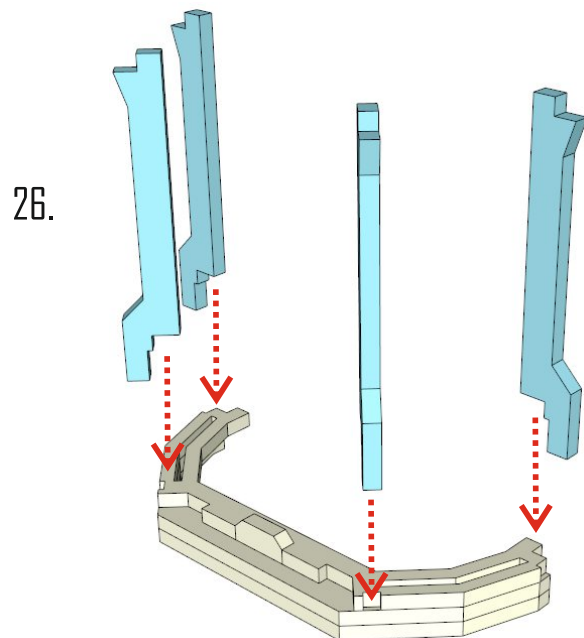
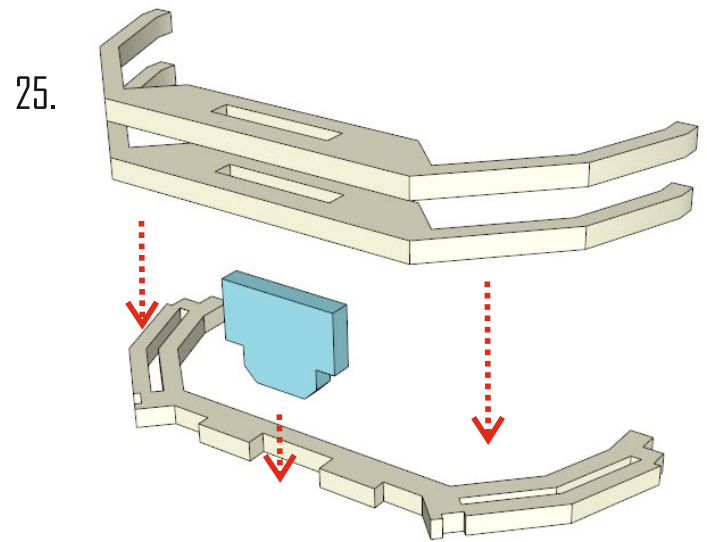
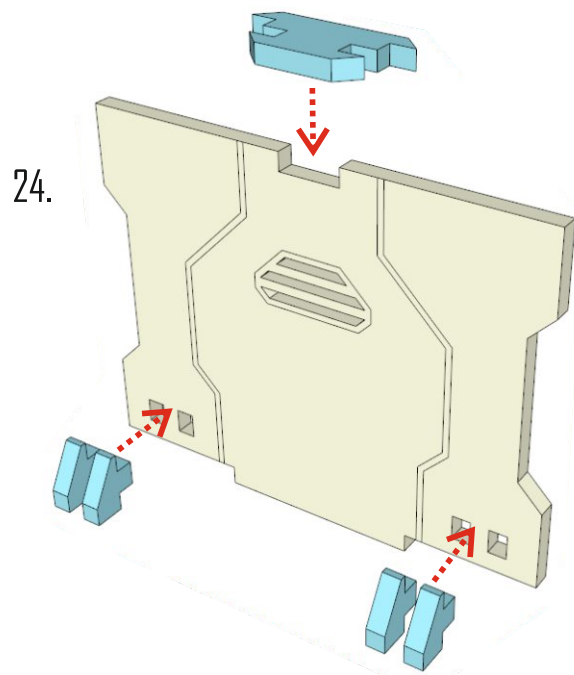
22.



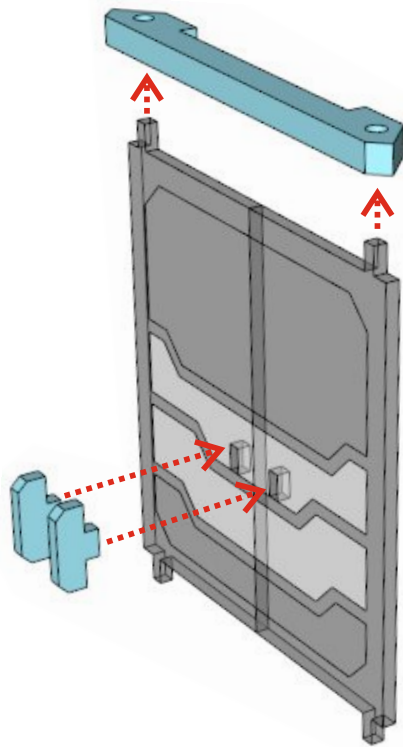
Do not glue this parts to the floor.

23.



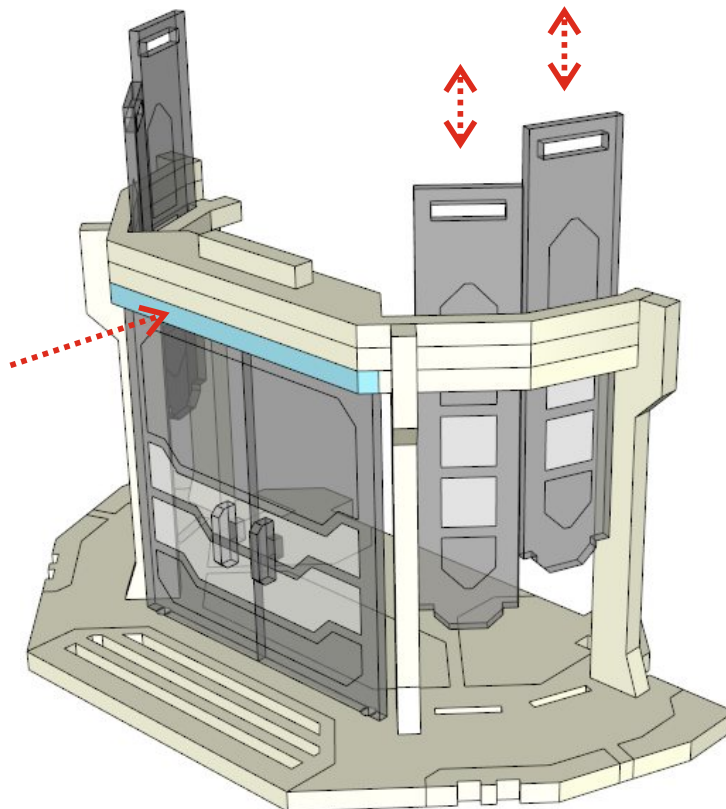


28



Do not use glue.
Doors should rotate freely.

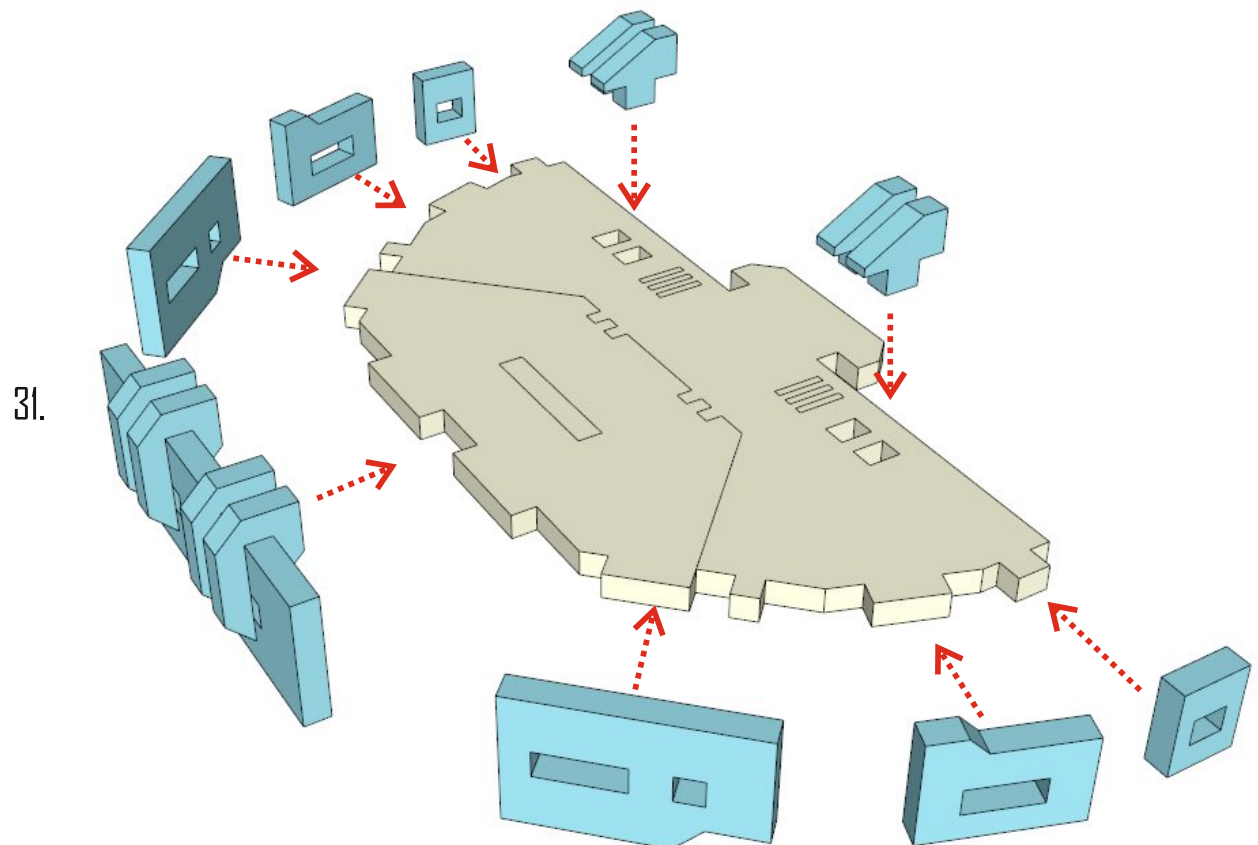
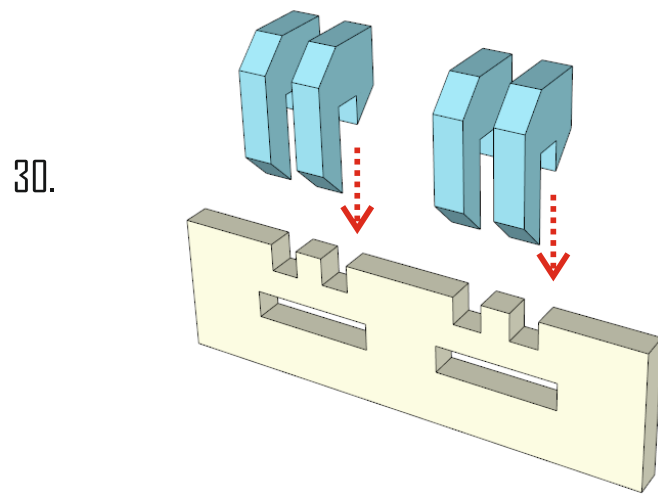
29.



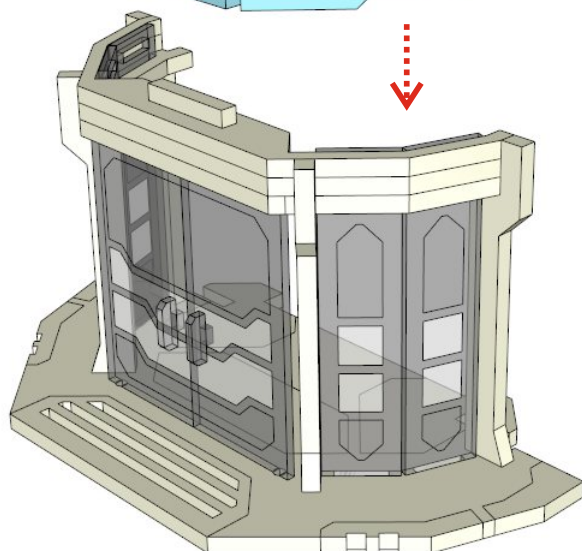
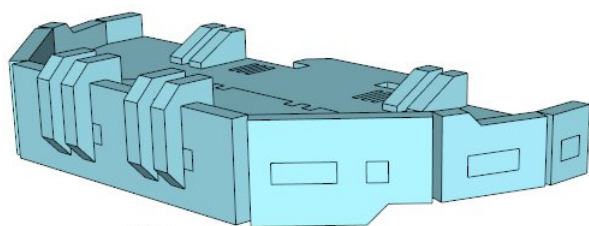
Glue only the marked part.
Doors should rotate freely.



We are recommend to perform
this step after painting.

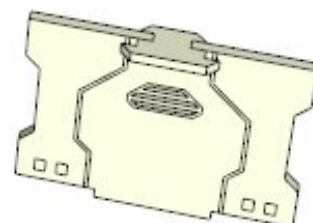
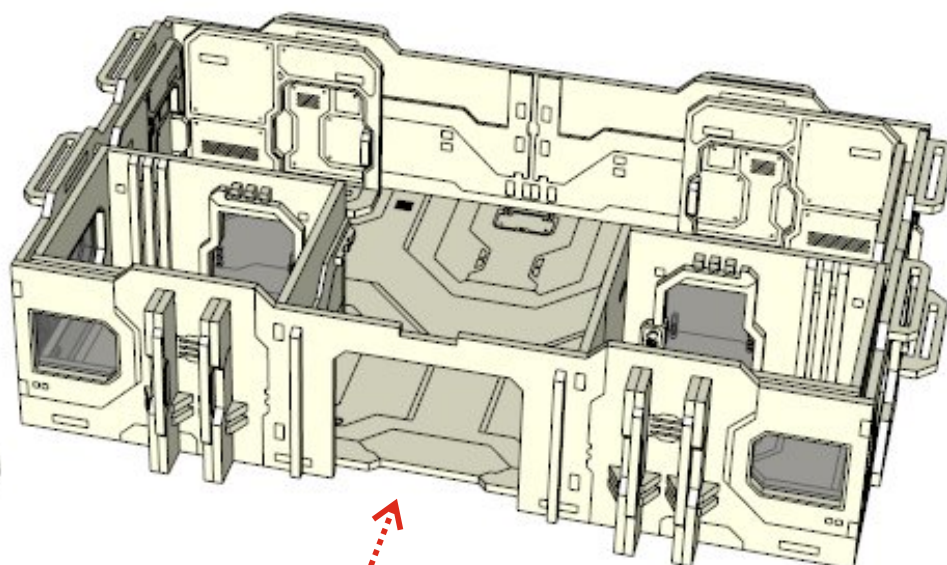
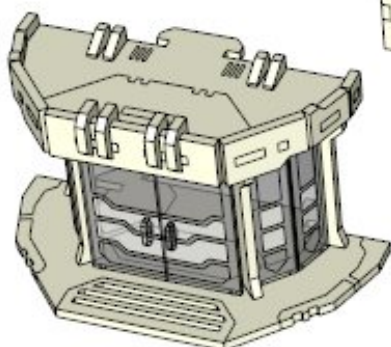


32.



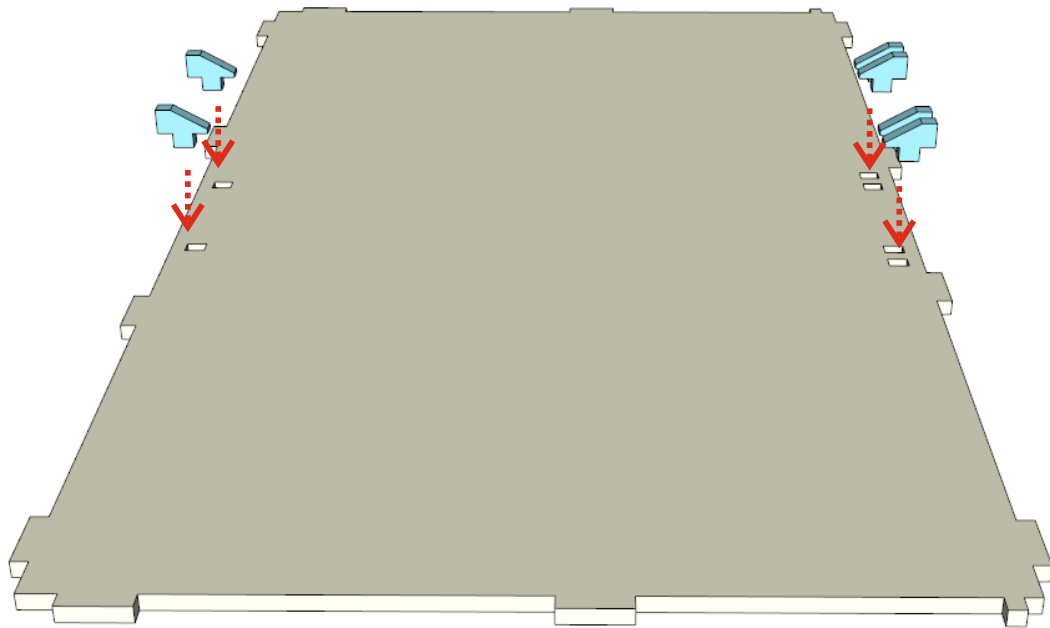
Do not glue rooftop to the building

33.

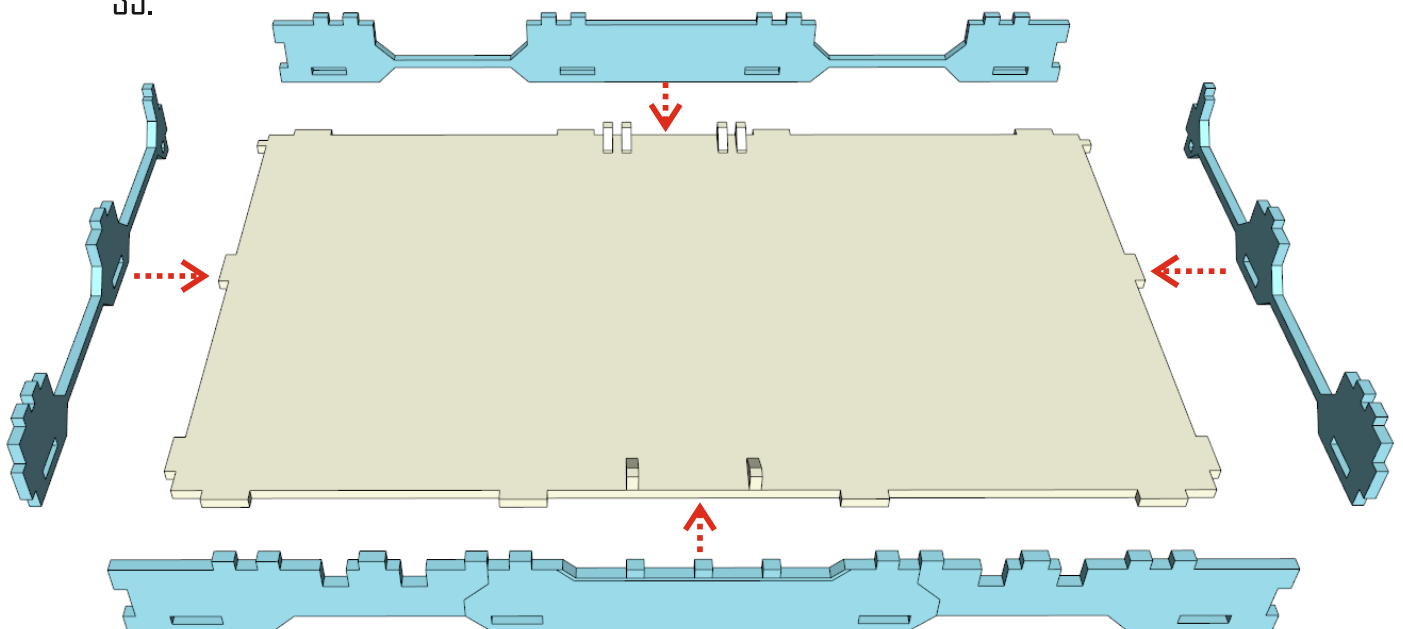


Do not glue this parts.

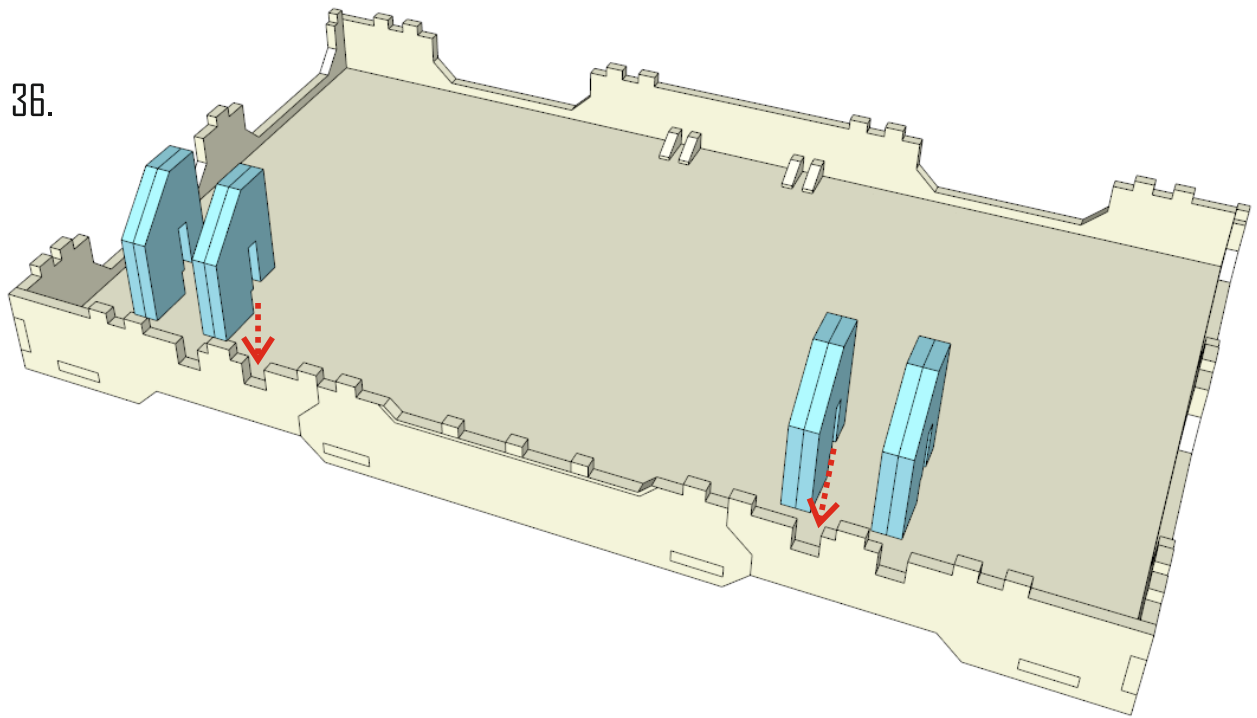
34.



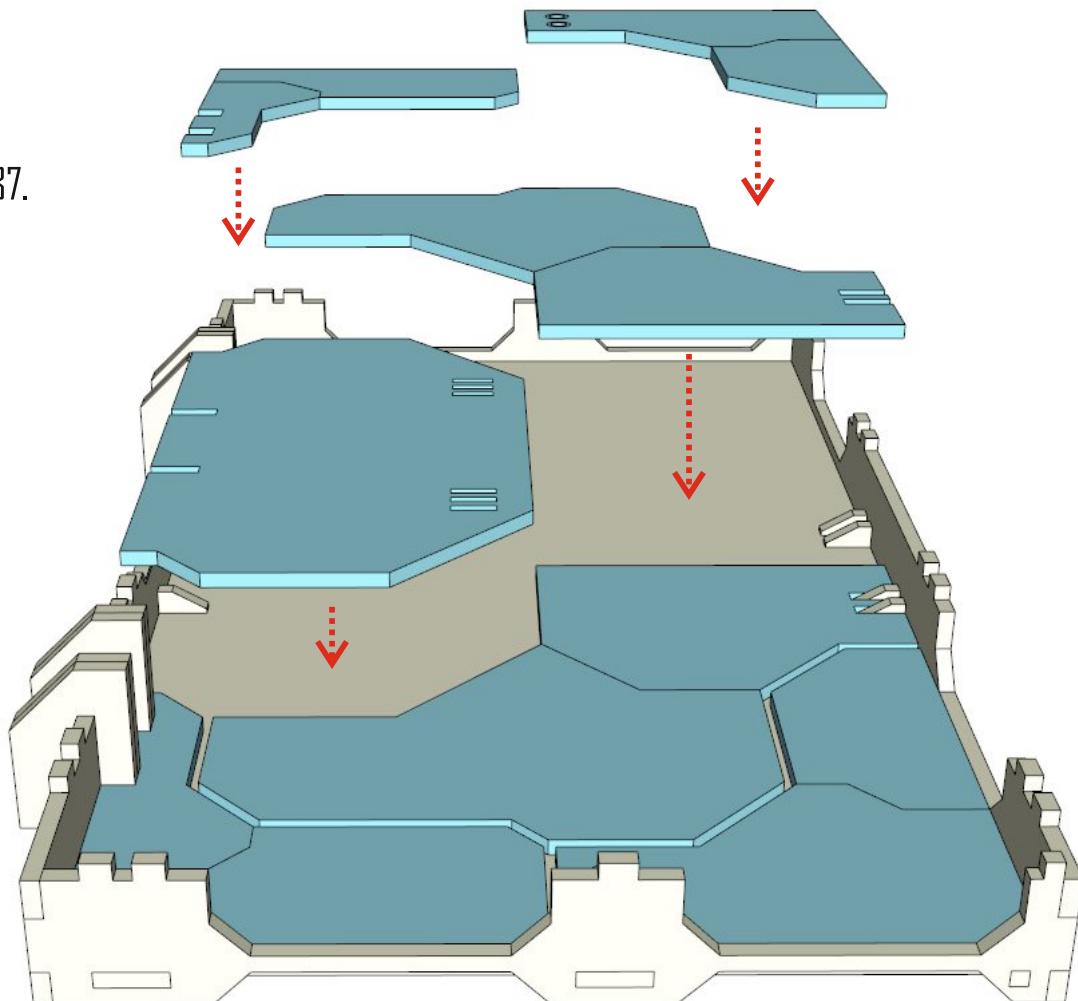
35.

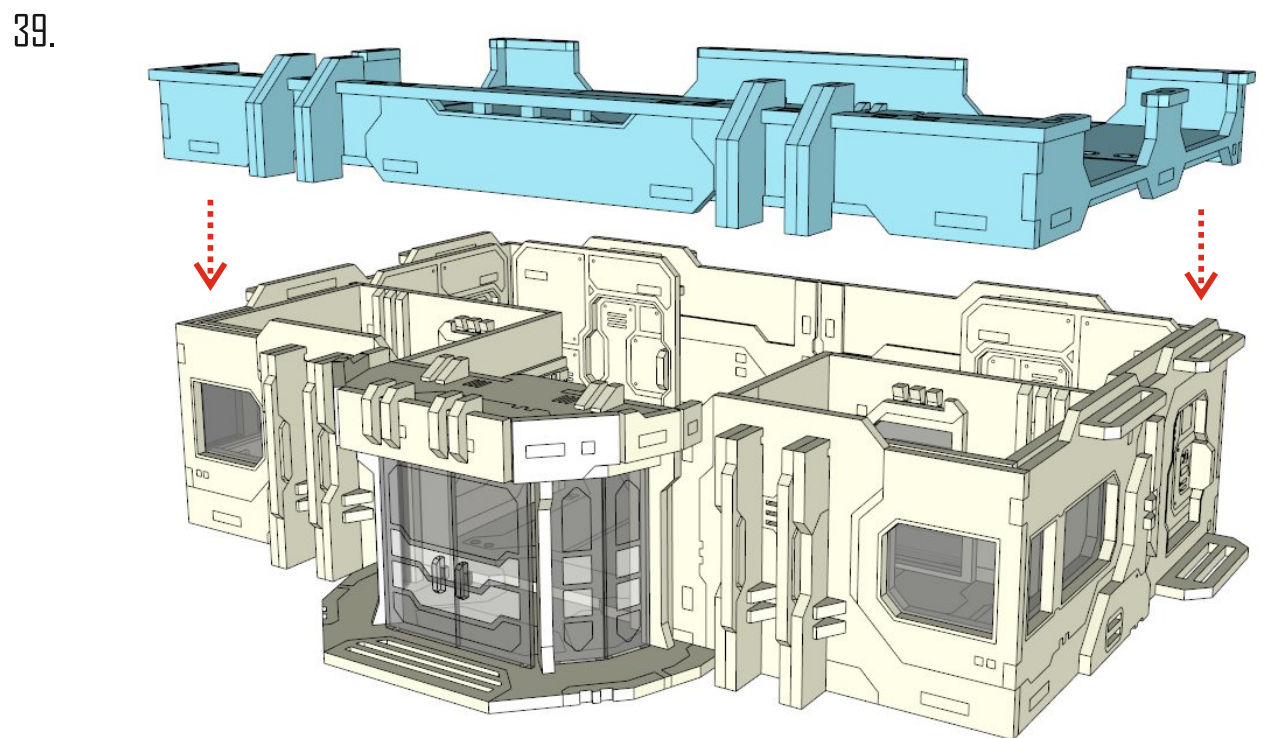
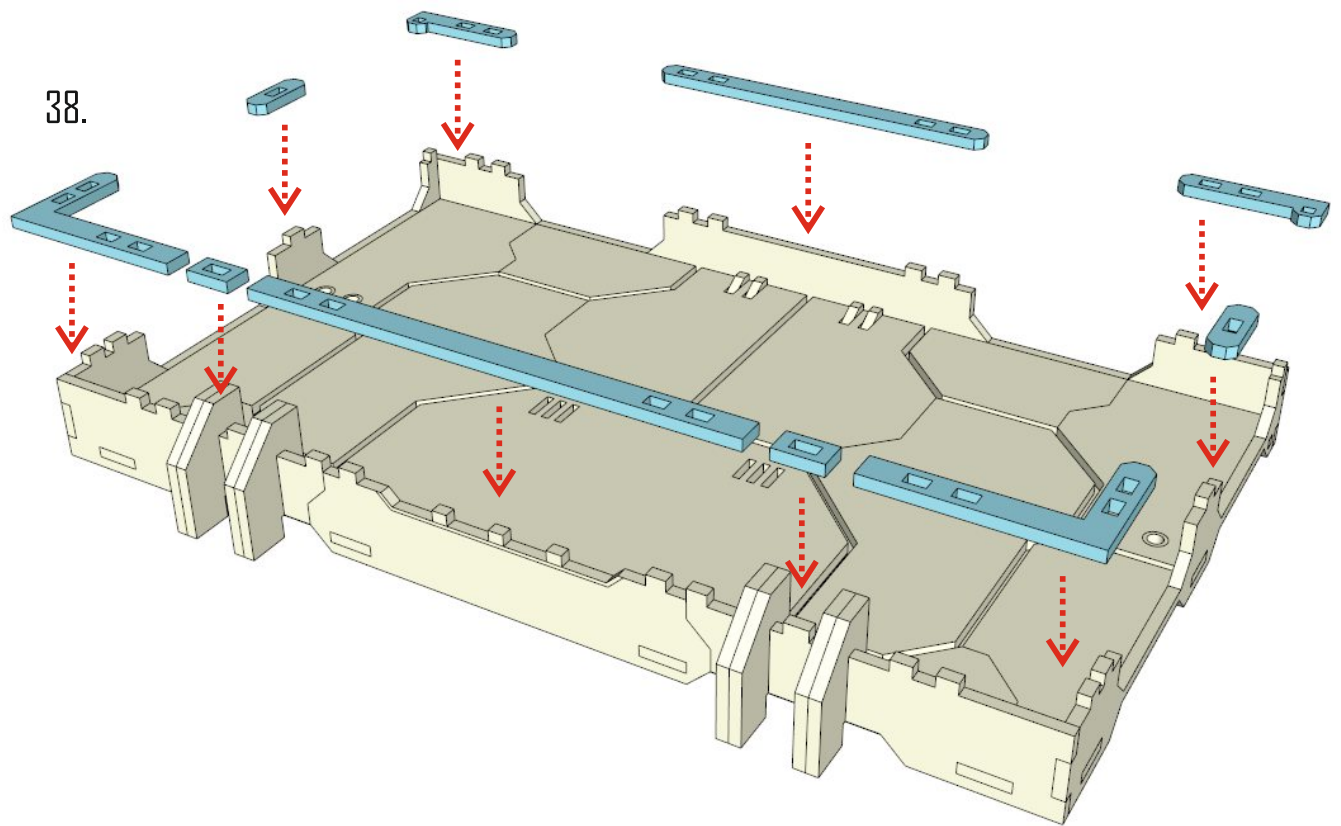


36.



37.





Do not glue rooftop
to the building