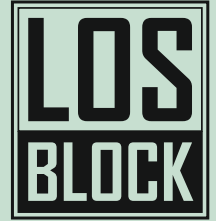
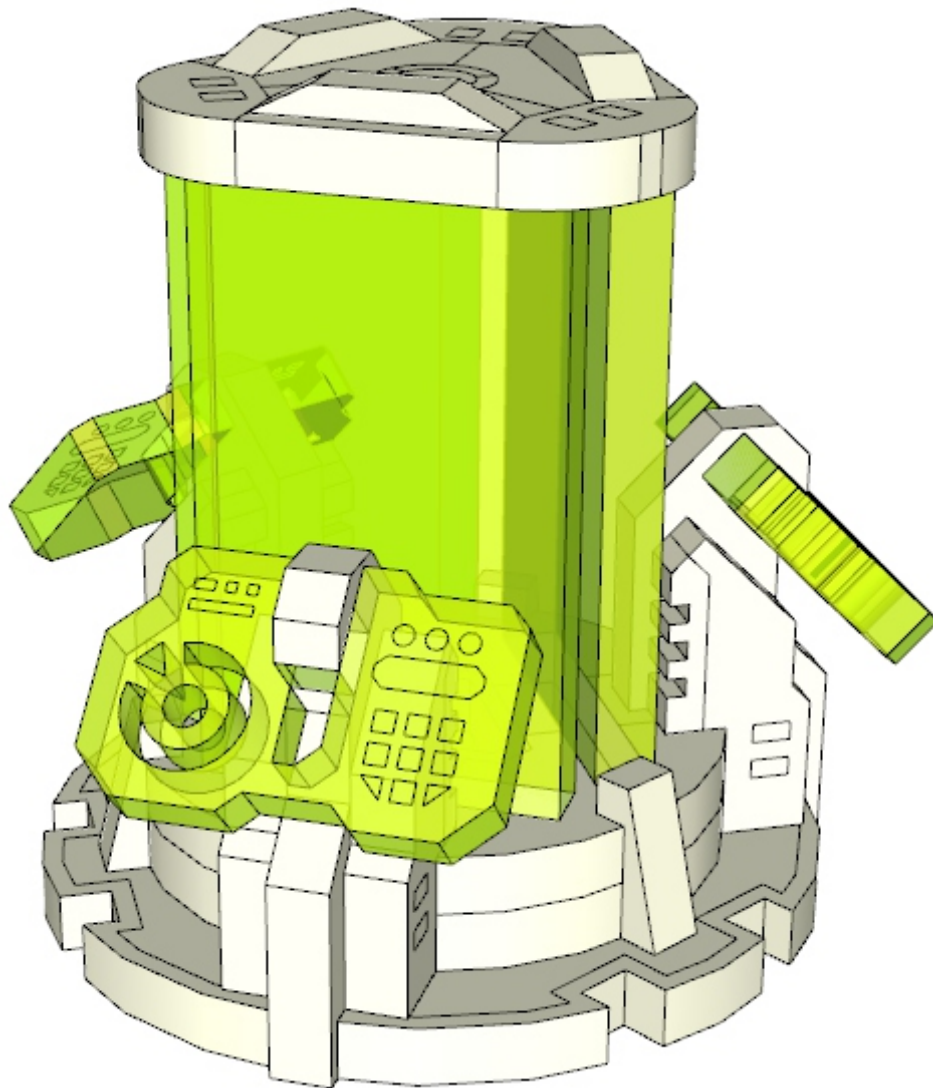


Terminals

construction manual



wargame scenery
&
accessories



Material: HDF, methacrylate

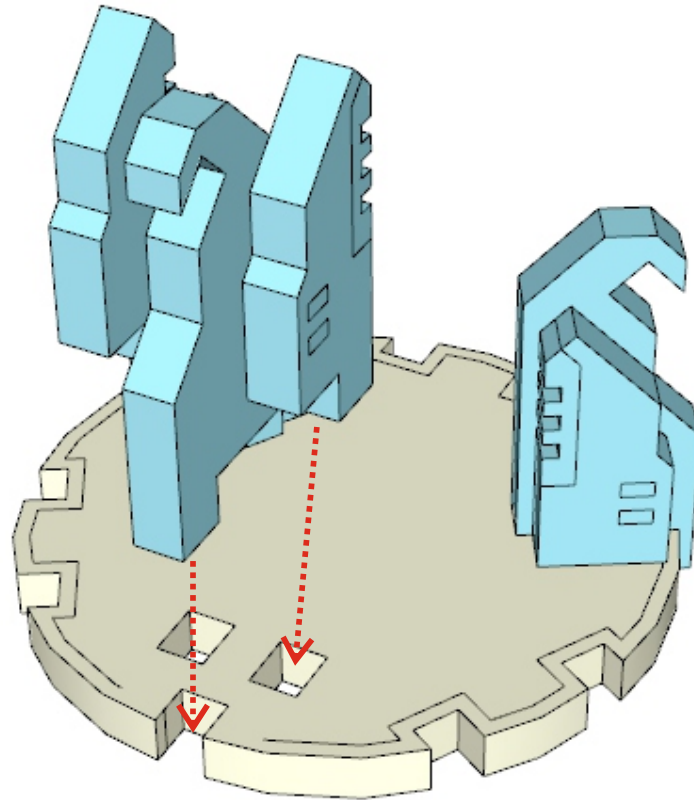
Push details from the form and clear the places where it were connected with model knife or flint-paper.
Be sure that protection cover on the methacrylate parts (if they are included) is removed.

We are recommend to use PVA glue or any other glue for wood.
For methacrylate parts you can use super-glue or its equivalents.
If you have any questions write us - store@losblock.com

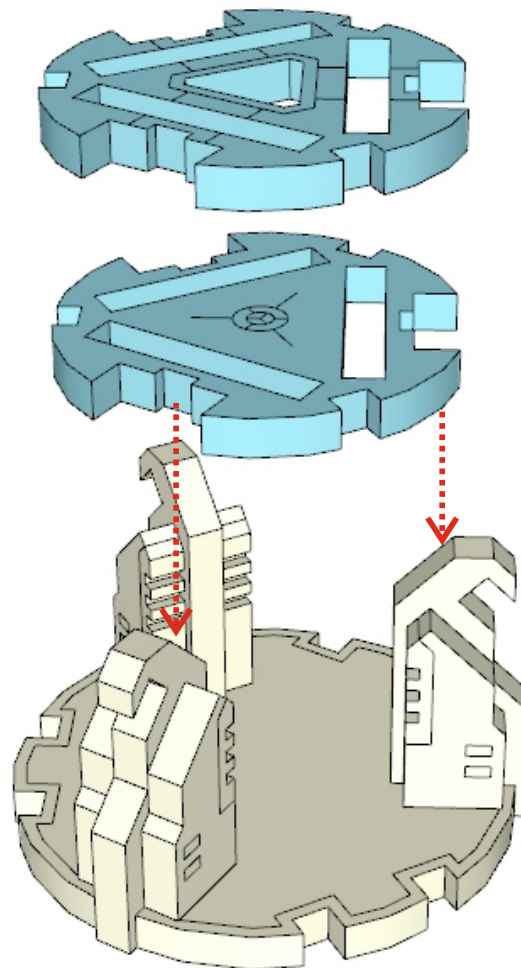
Small parts. Not recommended for children under 8 years.
Real object can slightly differ from presented in this manual.

© LOSBLOCK, 2017
www.losblock.com

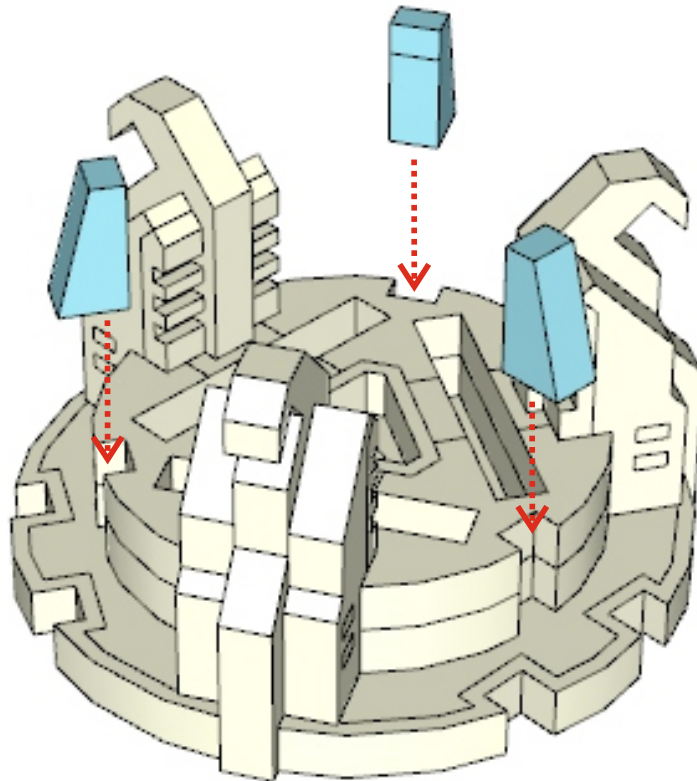
1



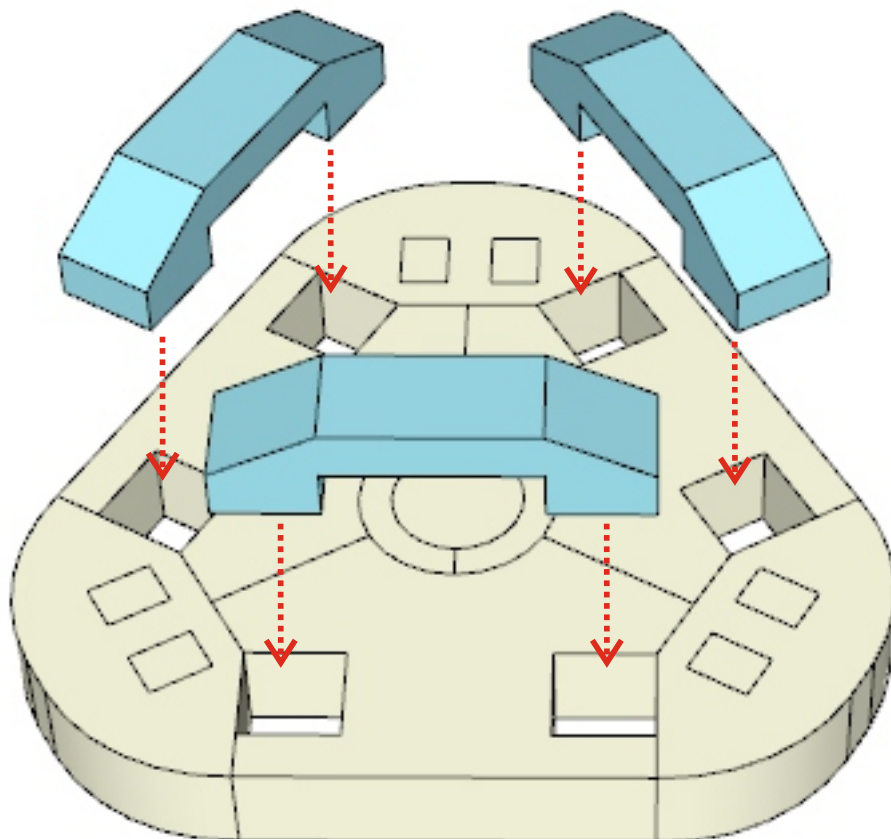
2.



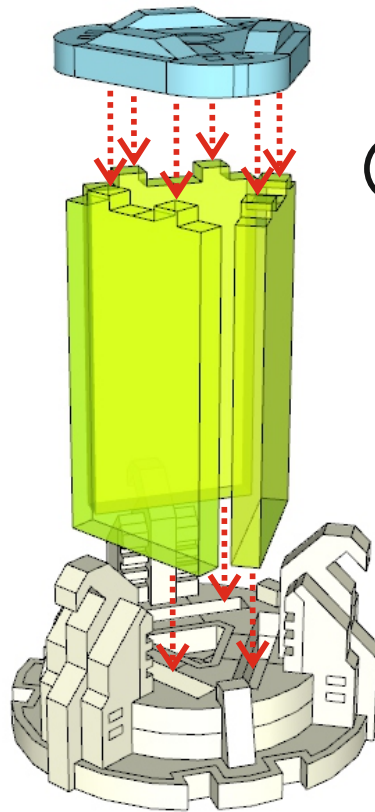
3.



4.

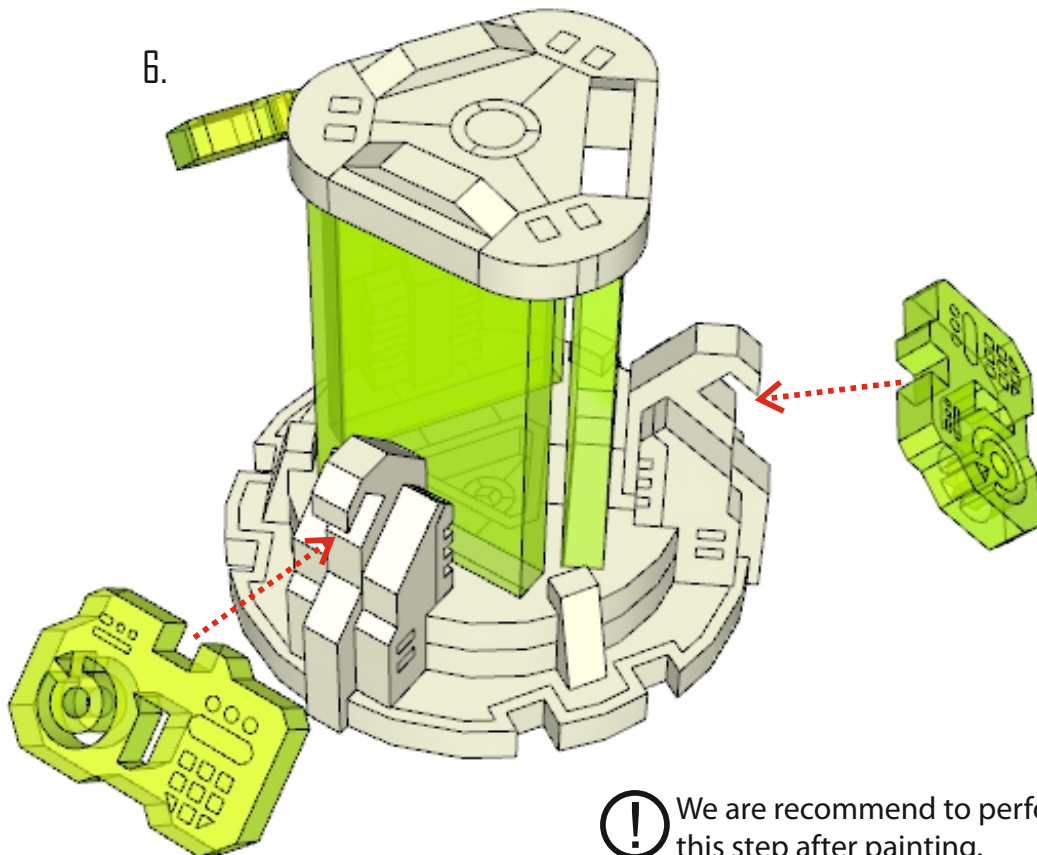


5.



! We are recommend to perform this step after painting.

6.



! We are recommend to perform this step after painting.