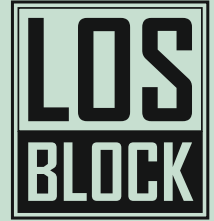



# Living Cell R, L

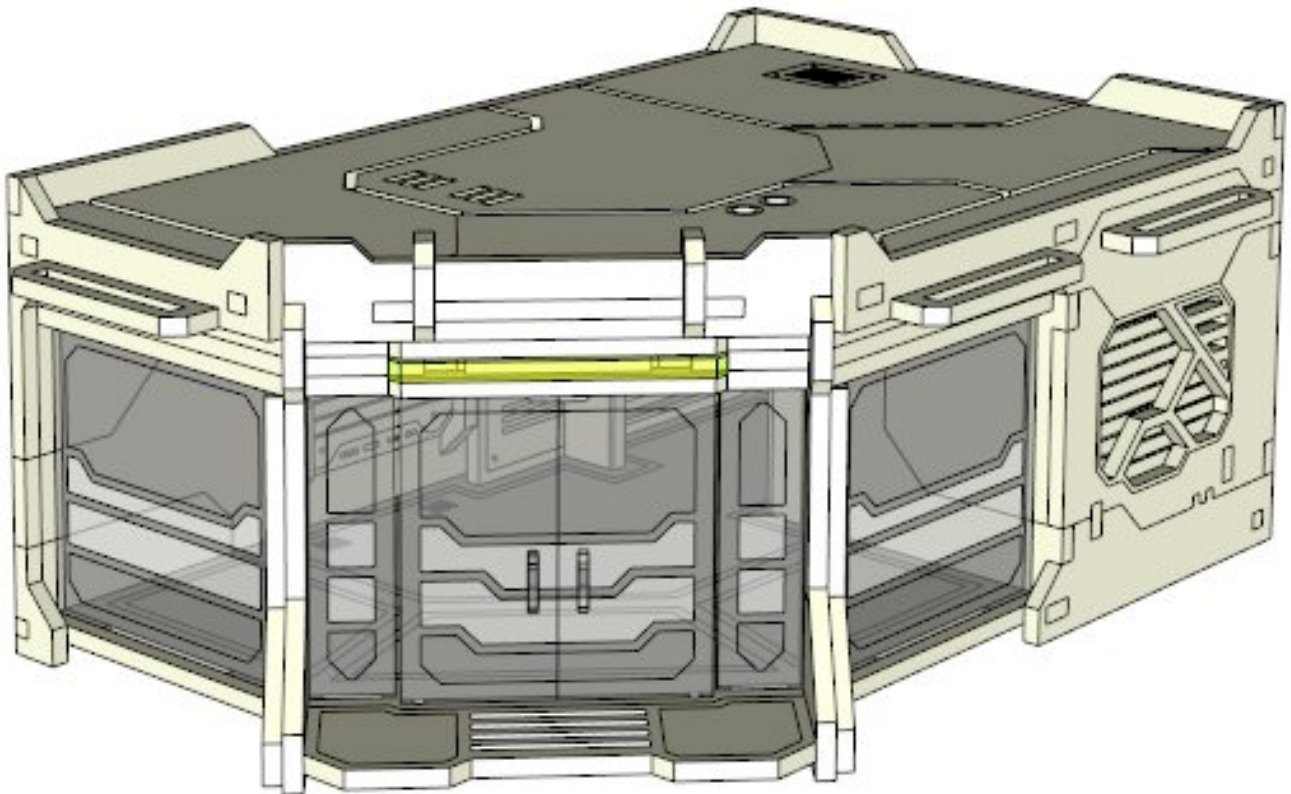
## first floor

### construction manual



wargame scenery  
&  
accessories

 **Living Cell L** is the mirror reflection of presented in this manual  
**Living Cell R** and their construction process is the same.



Material: methacrylate, HDF

Remove the protection cover from details before construction.

We recommend to use the SuperGlue or its equivalents.

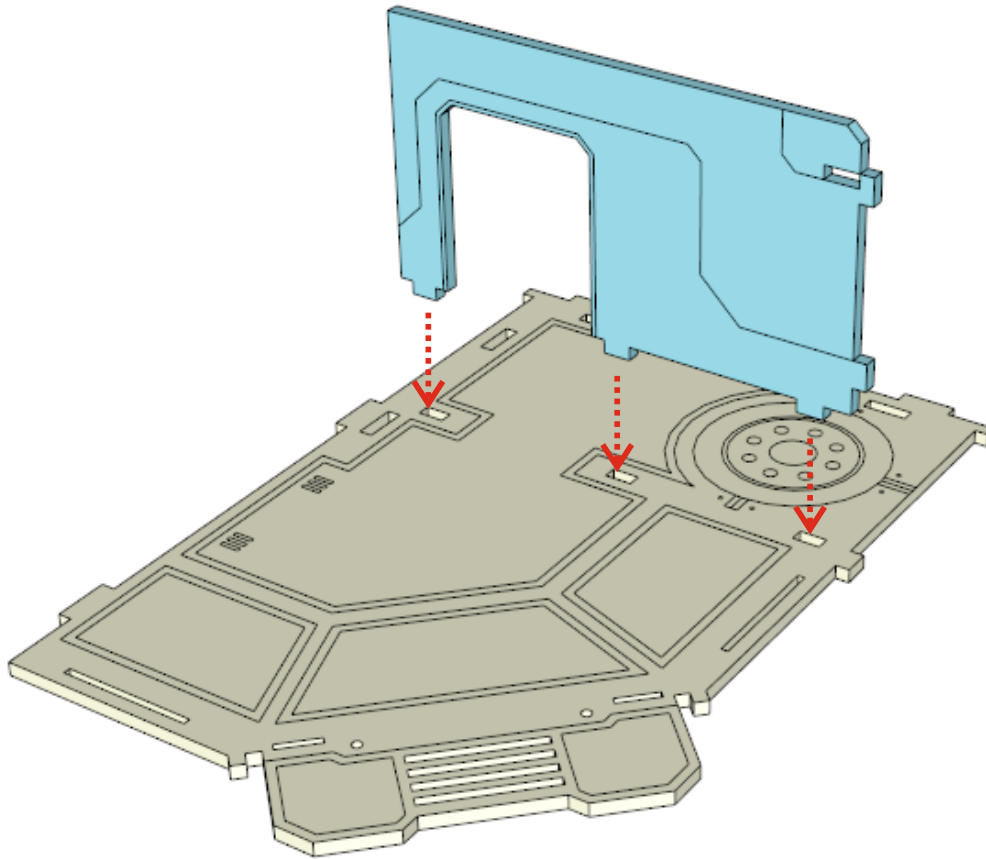
Degrease all surfaces before painting.

If you have any questions write us - [store@losblock.com](mailto:store@losblock.com)

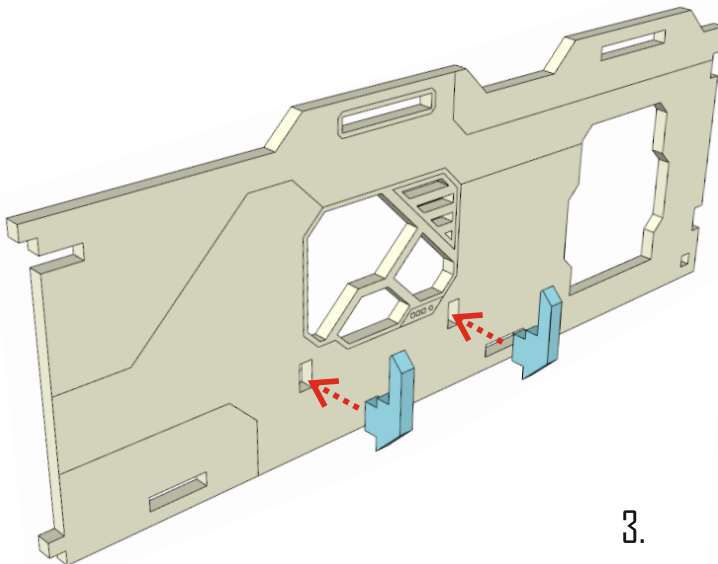
Small parts. Not recommended for children under 6 years.  
Real object can slightly differ from presented in this manual.

LOS BLOCK, 2015  
[www.losblock.com](http://www.losblock.com)

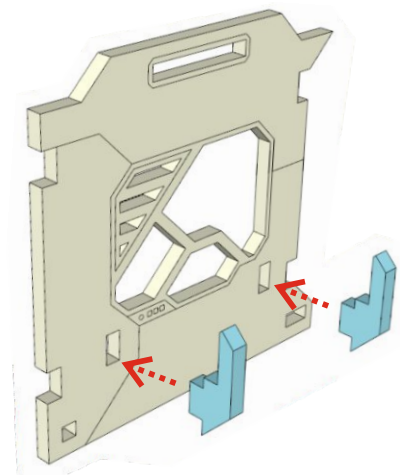
1.



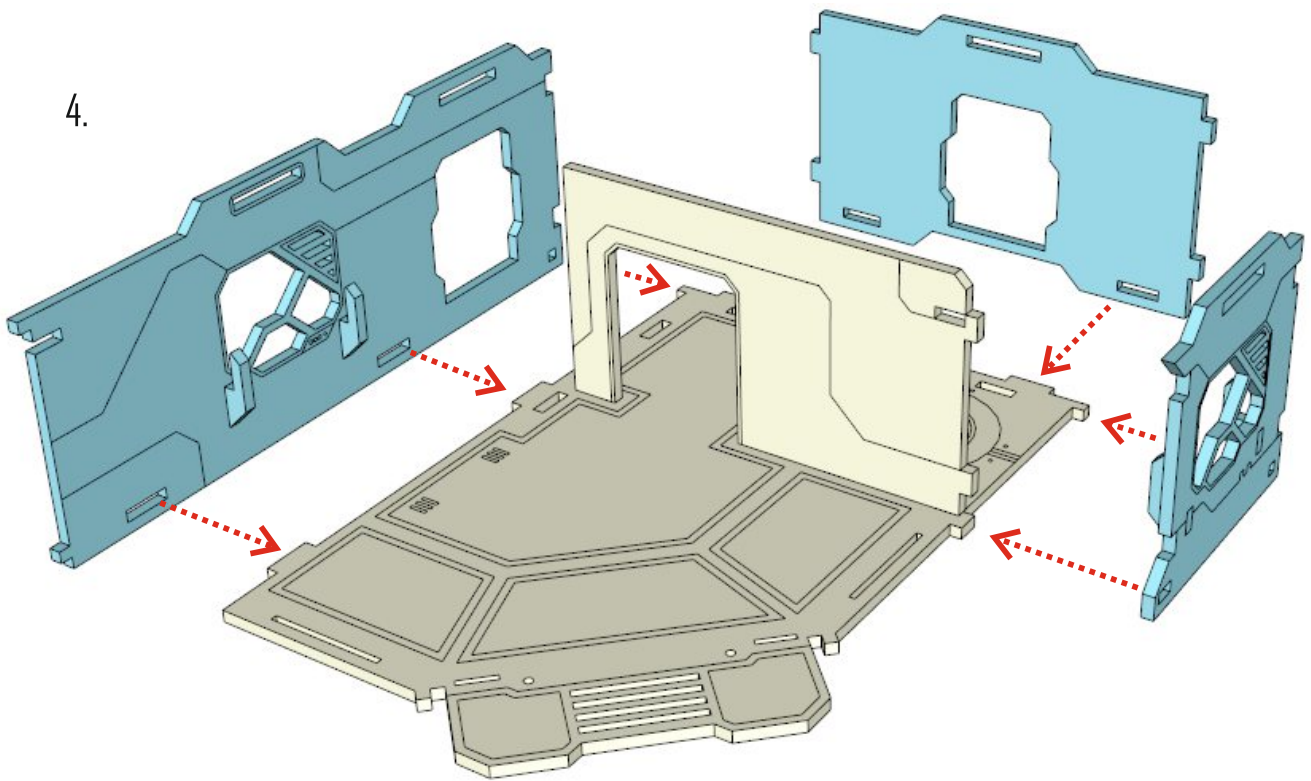
2.



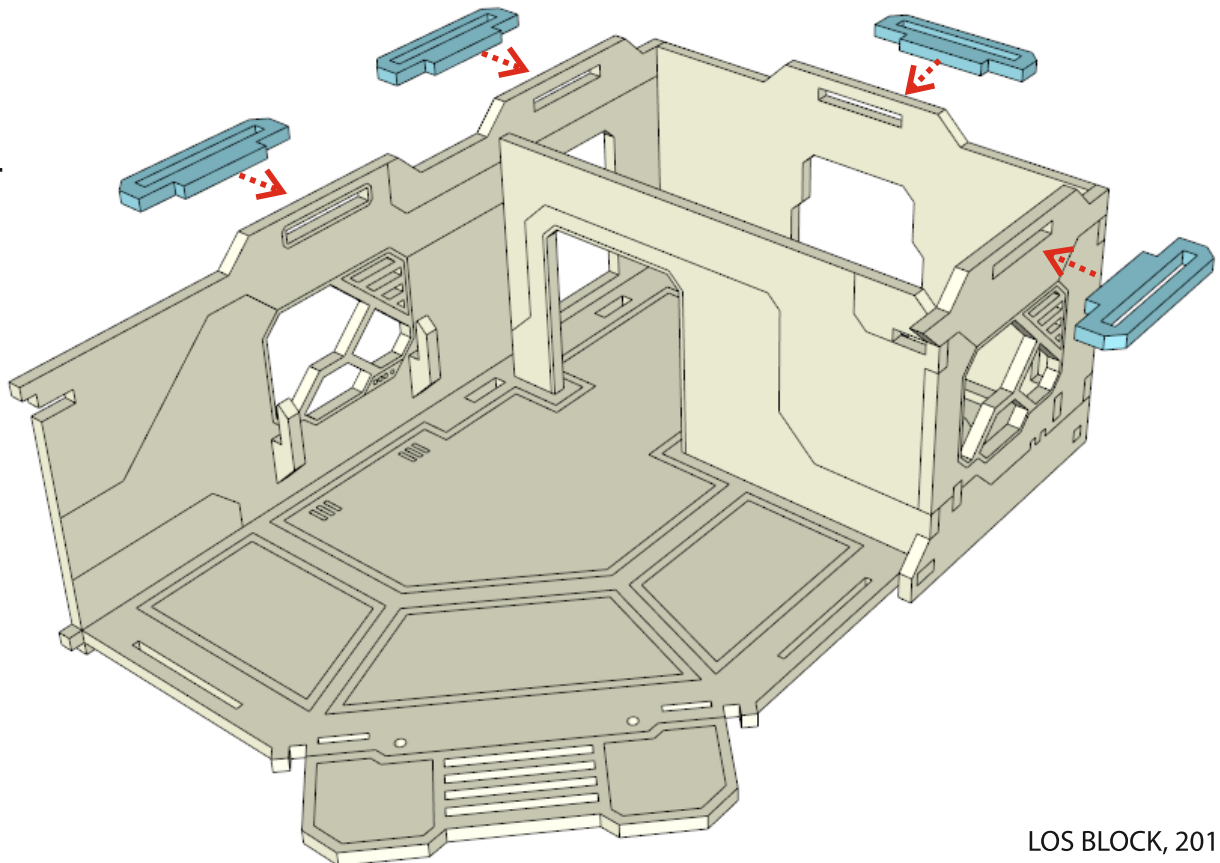
3.



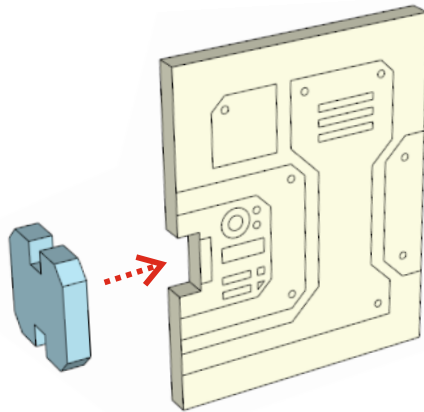
4.



5.

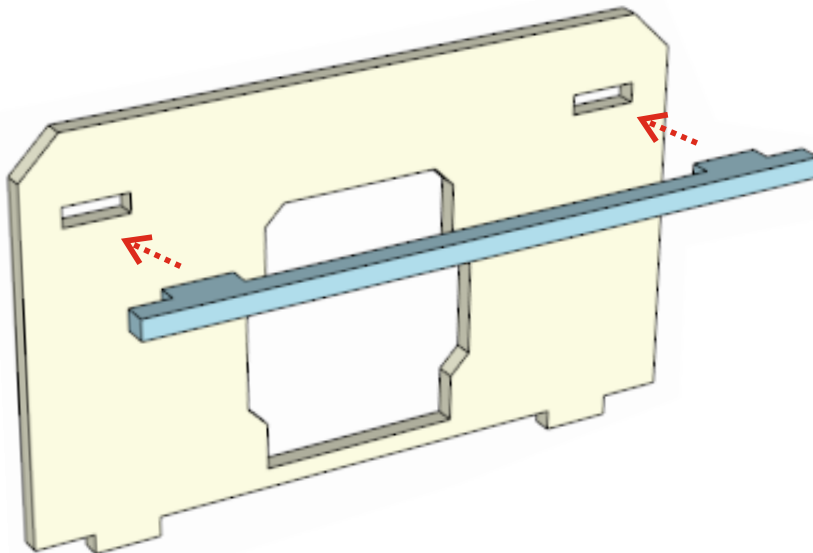


6.

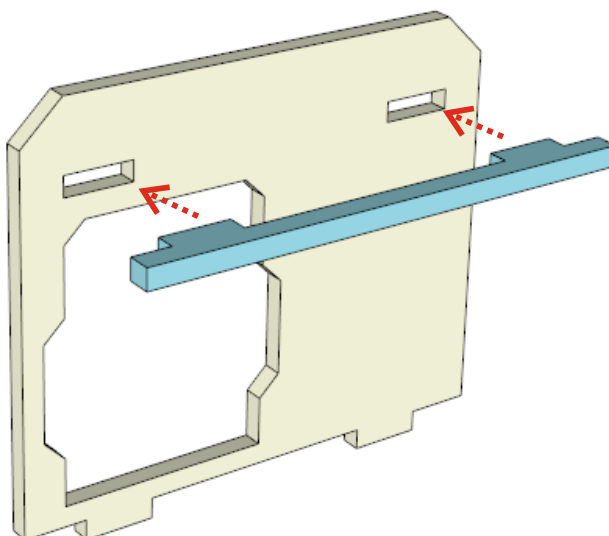


Repeat this action  
for every door.

7.

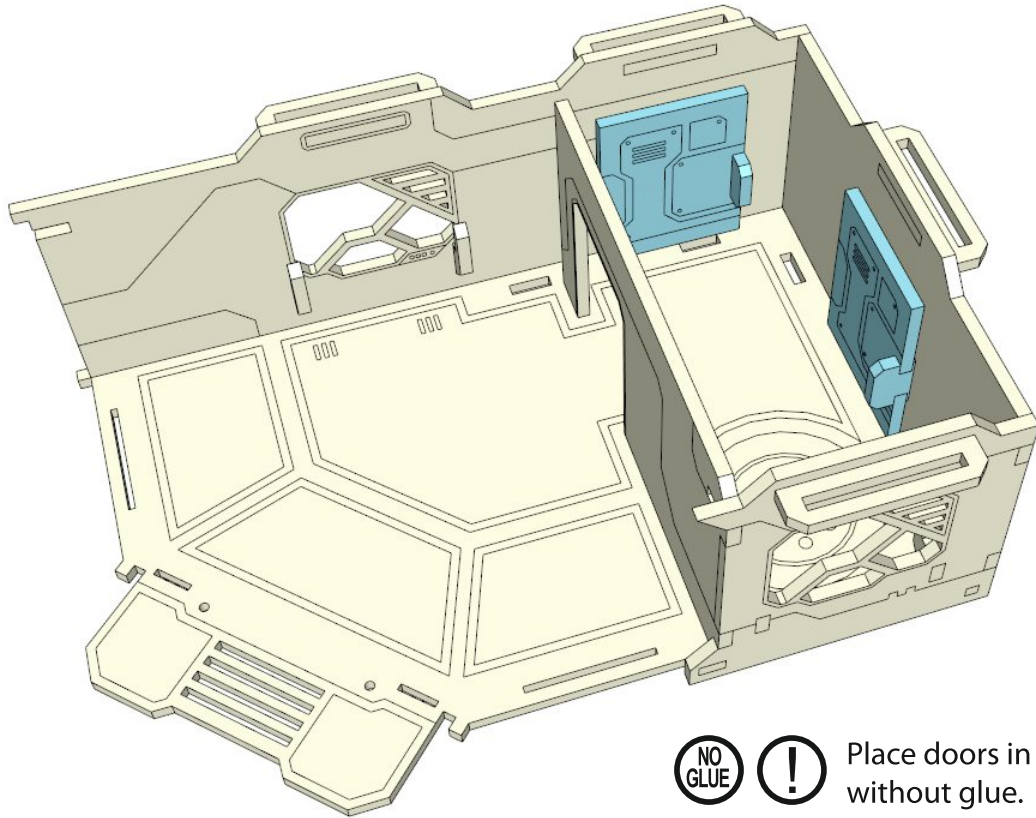


8.



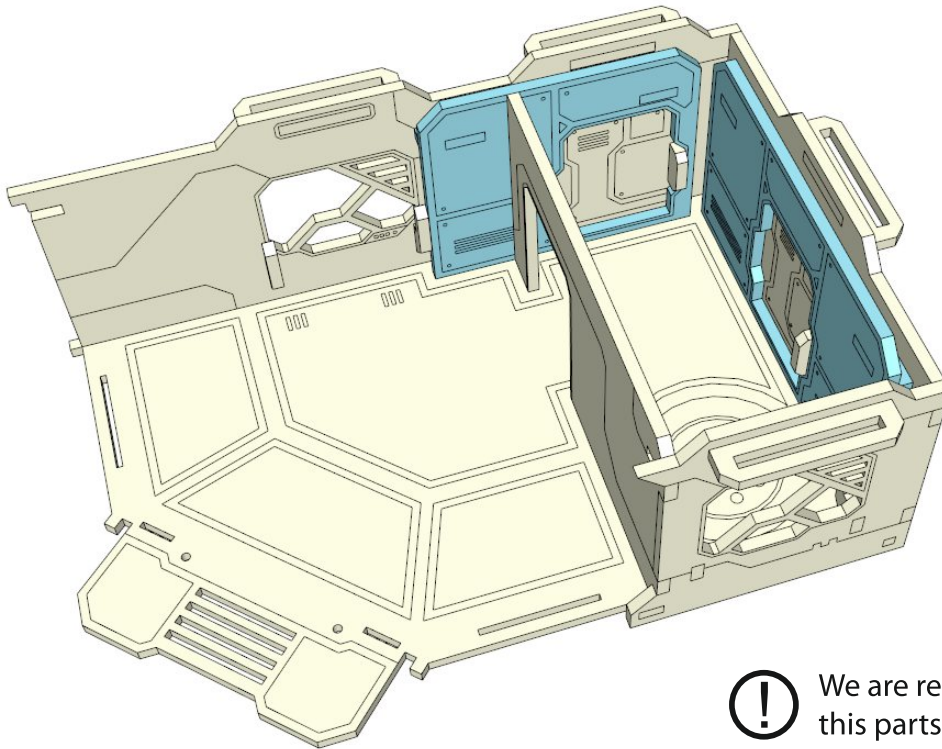


9.



Place doors in the apertures without glue.

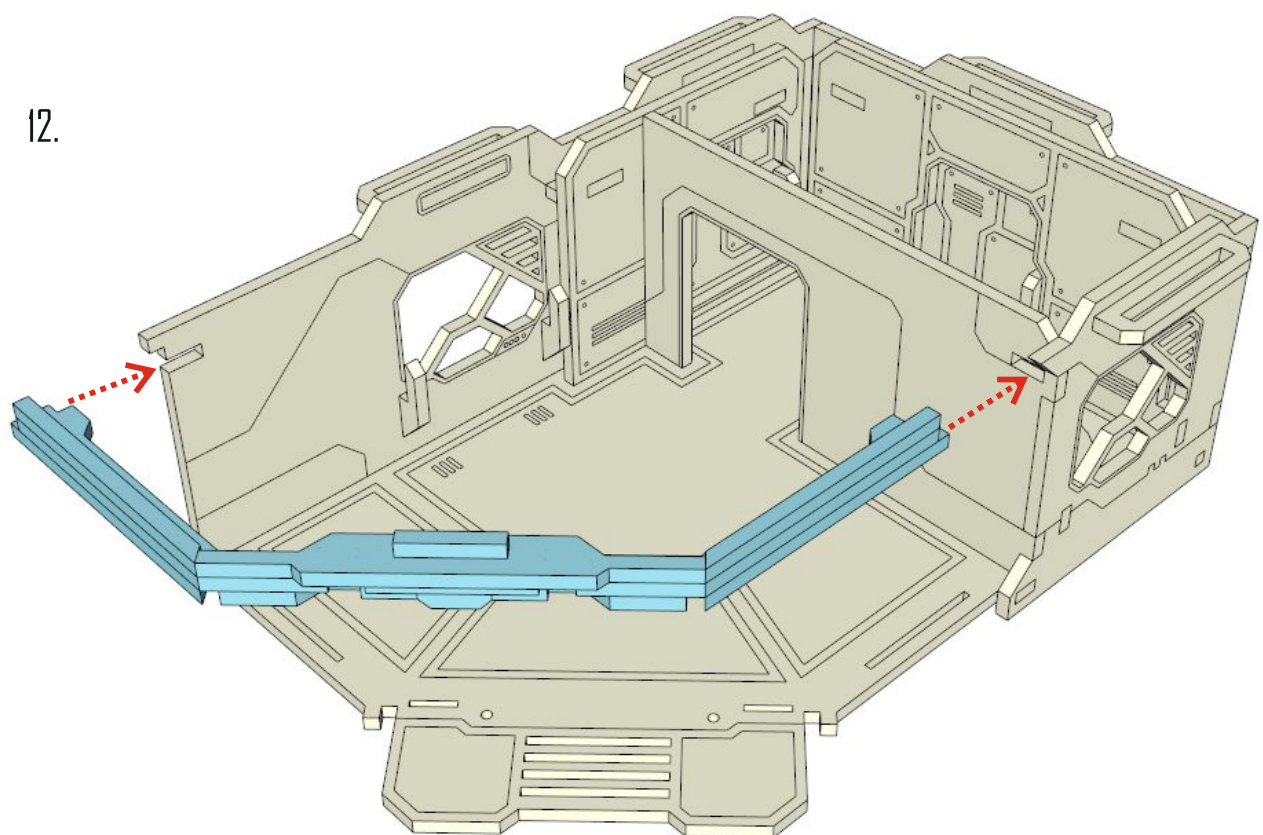
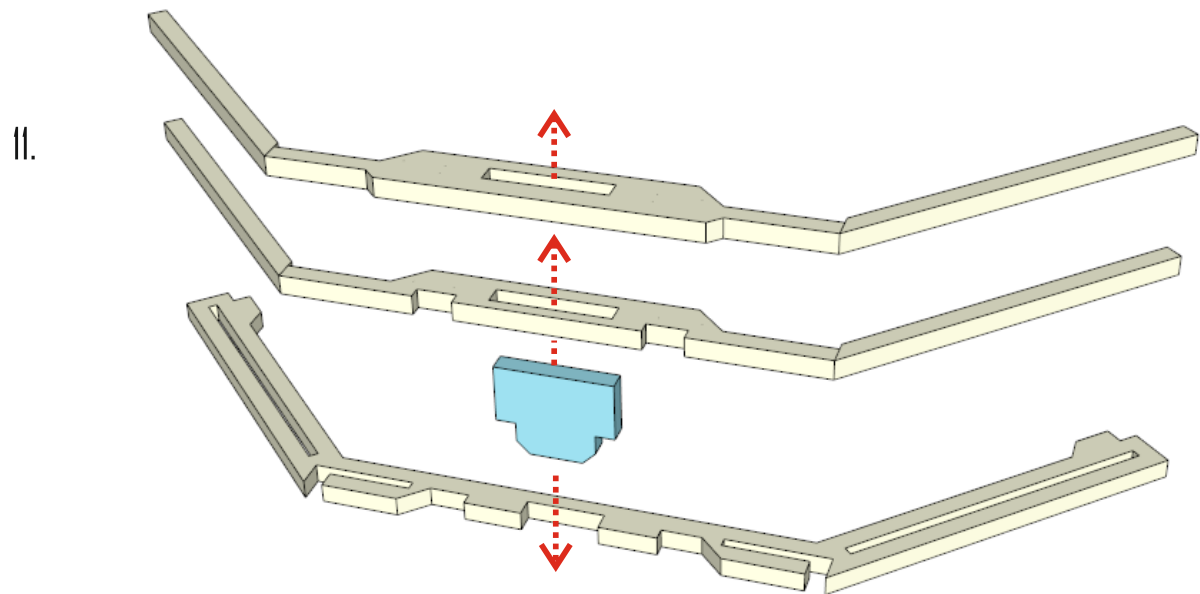
10.



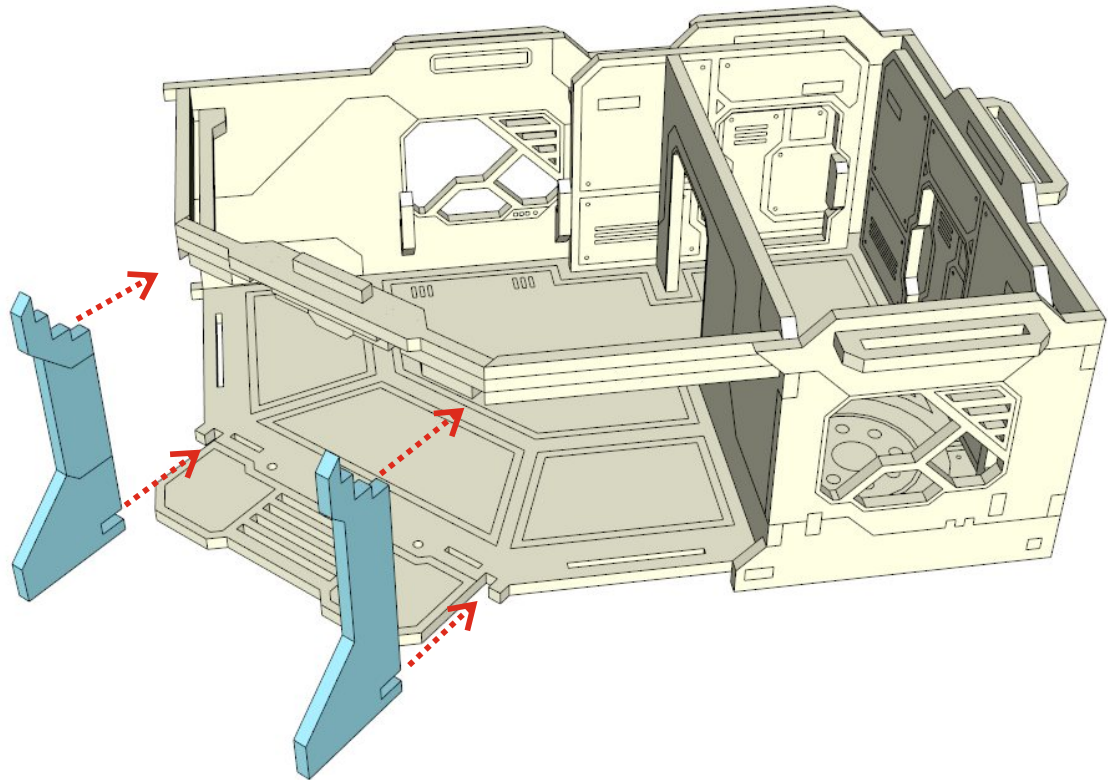
We are recommend to glue this parts after painting.



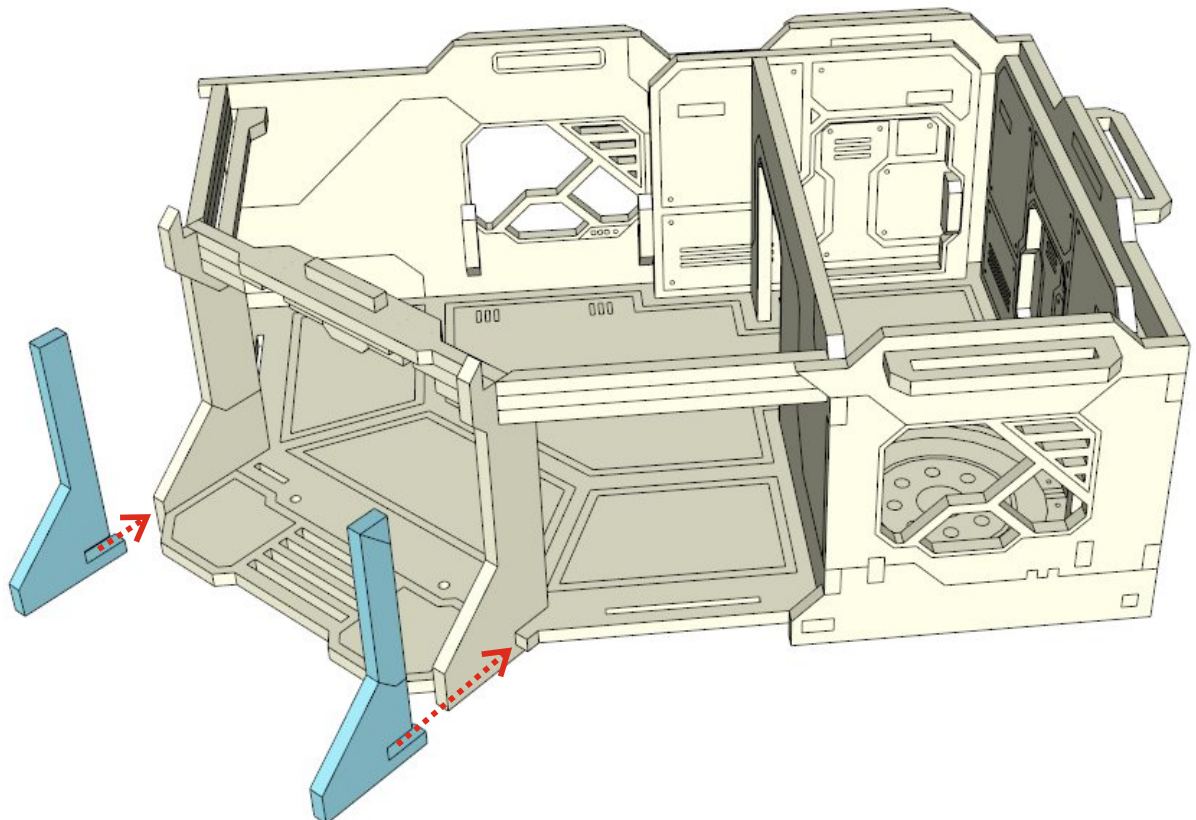
Be sure that doors are moving freely.



13.

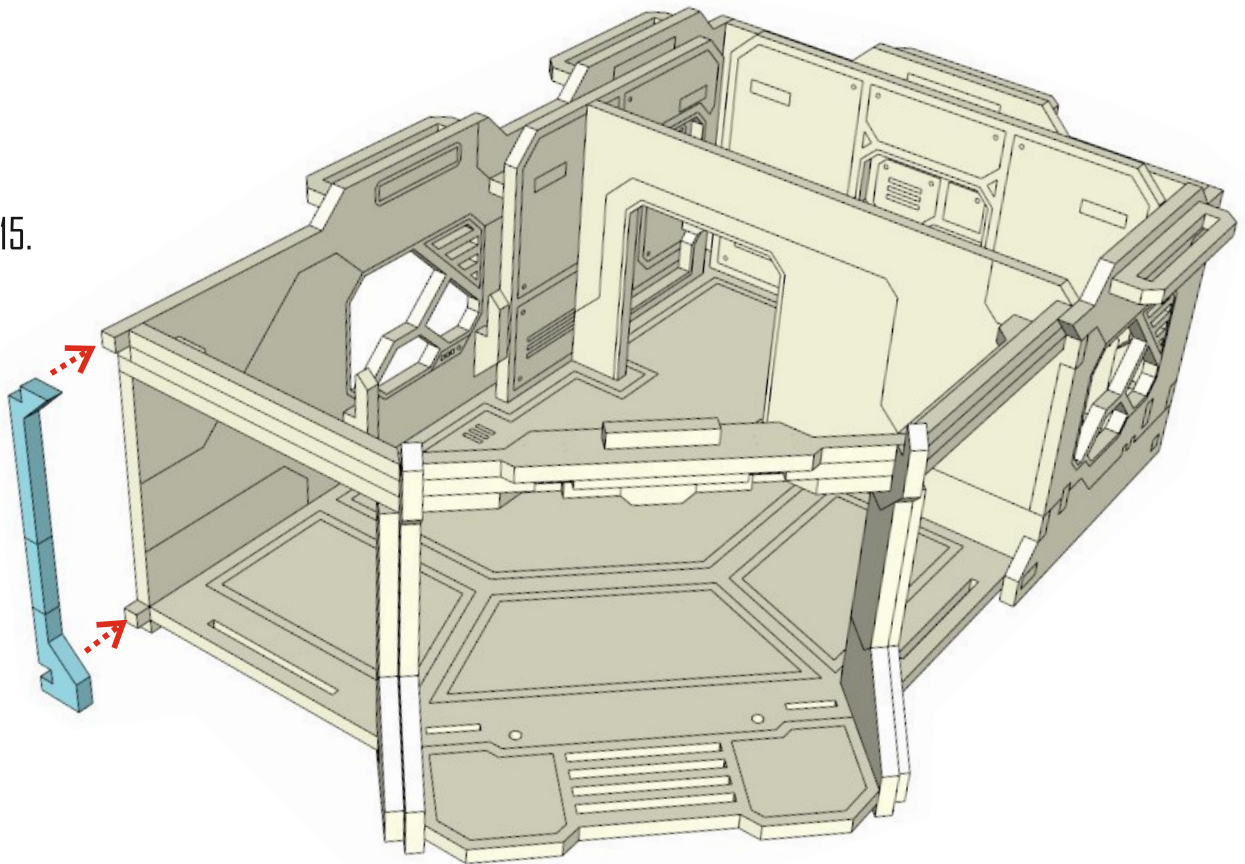


14.

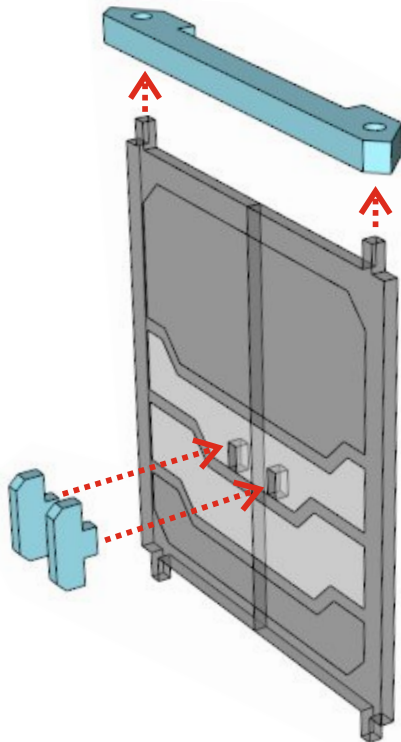




15.



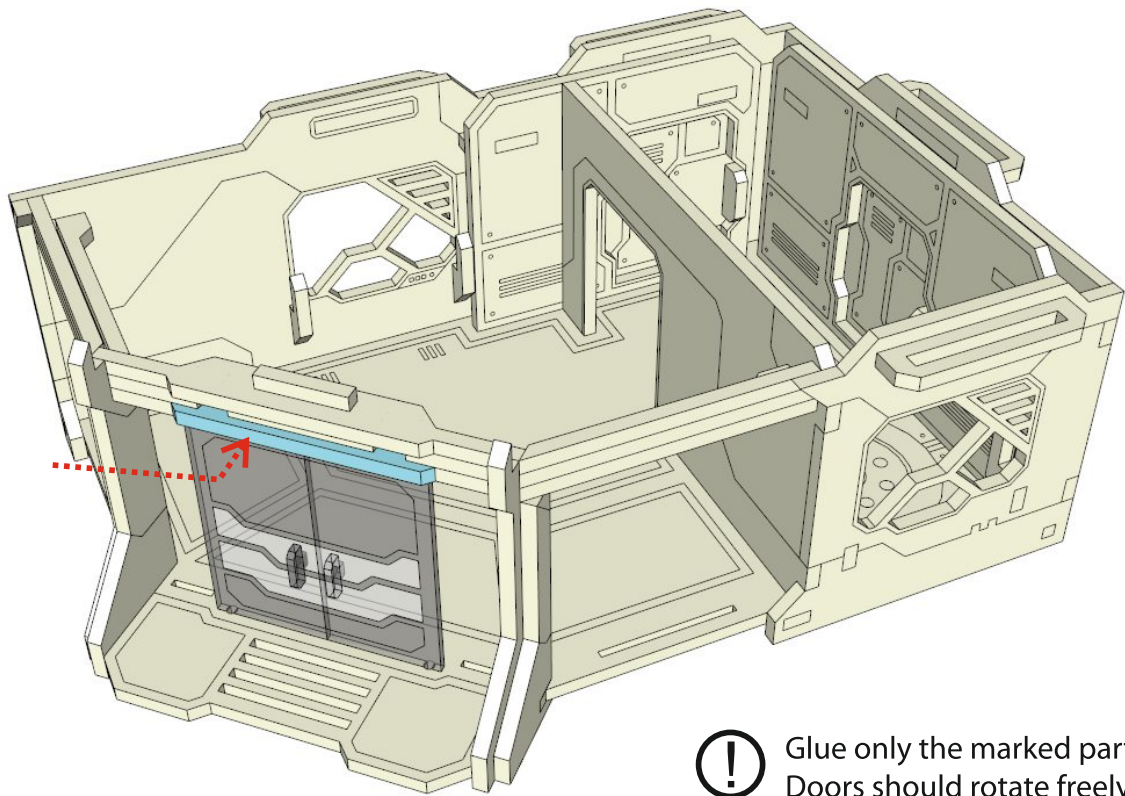
16.



Do not use glue.  
Doors should rotate freely.



17.

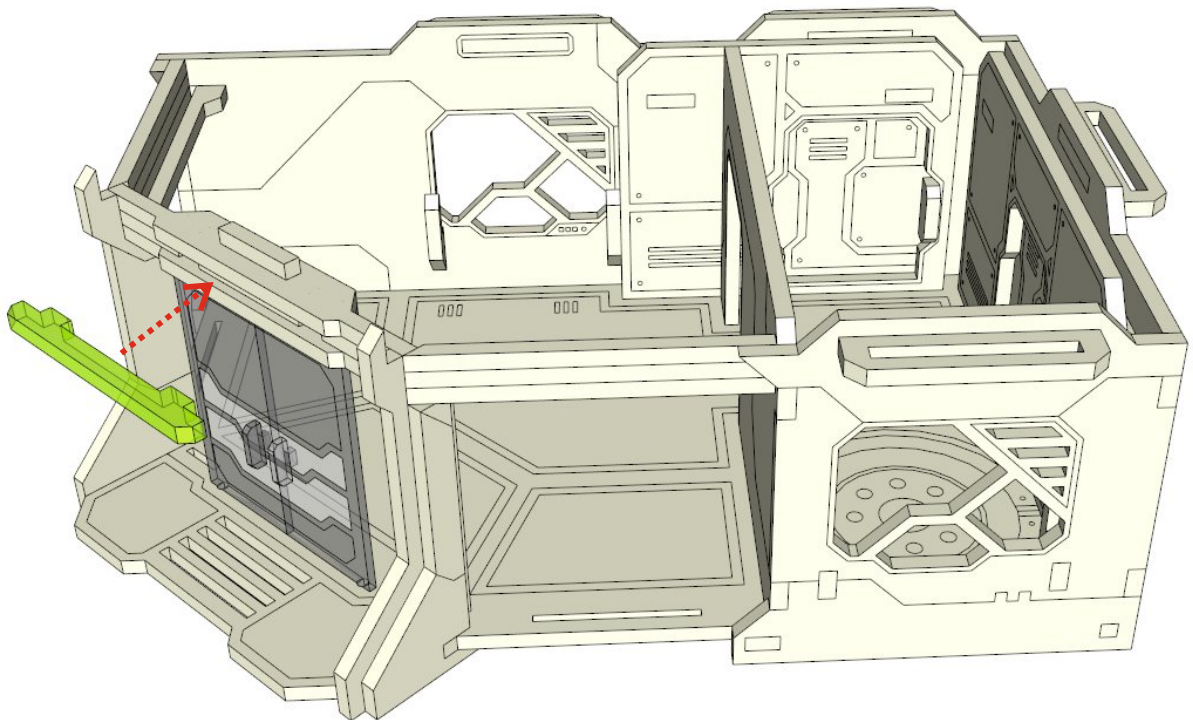


Glue only the marked part.  
Doors should rotate freely.



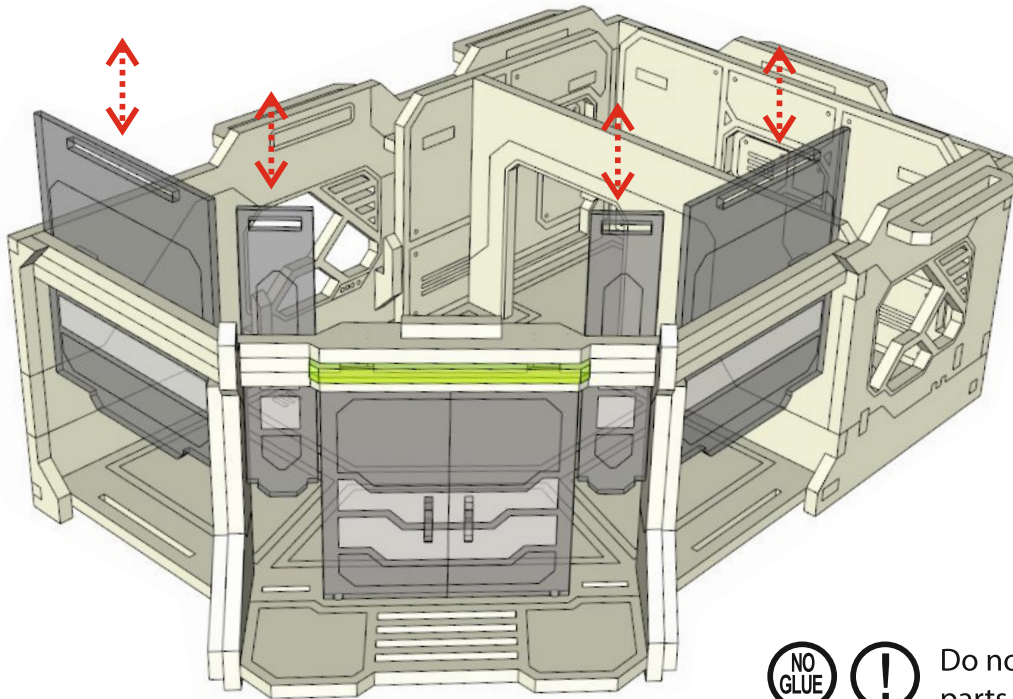
We are recommend to perform  
this step after painting.

18.



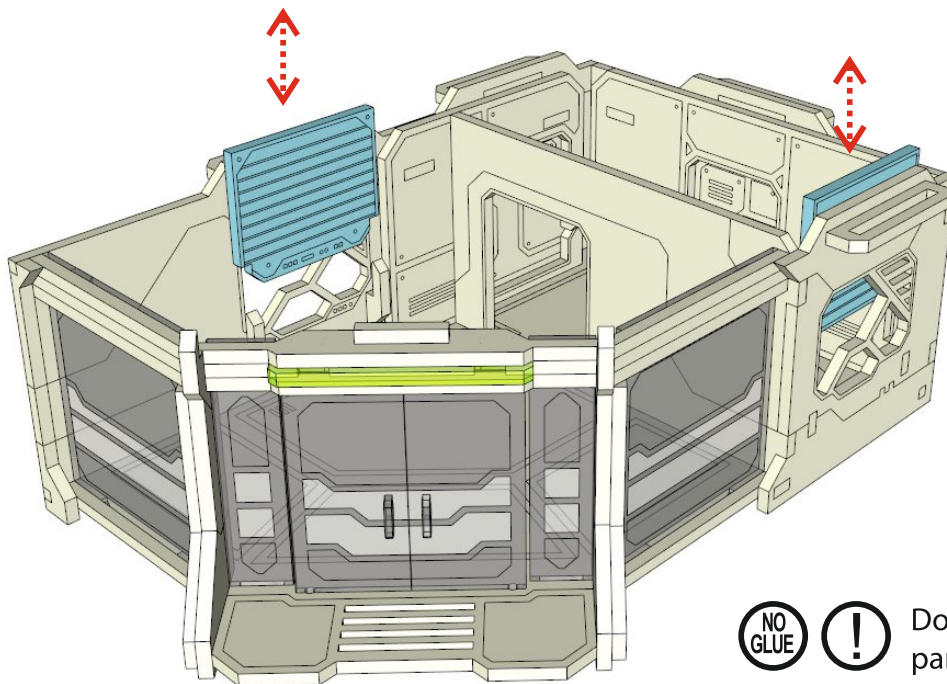
We are recommend to perform  
this step after painting.

19.



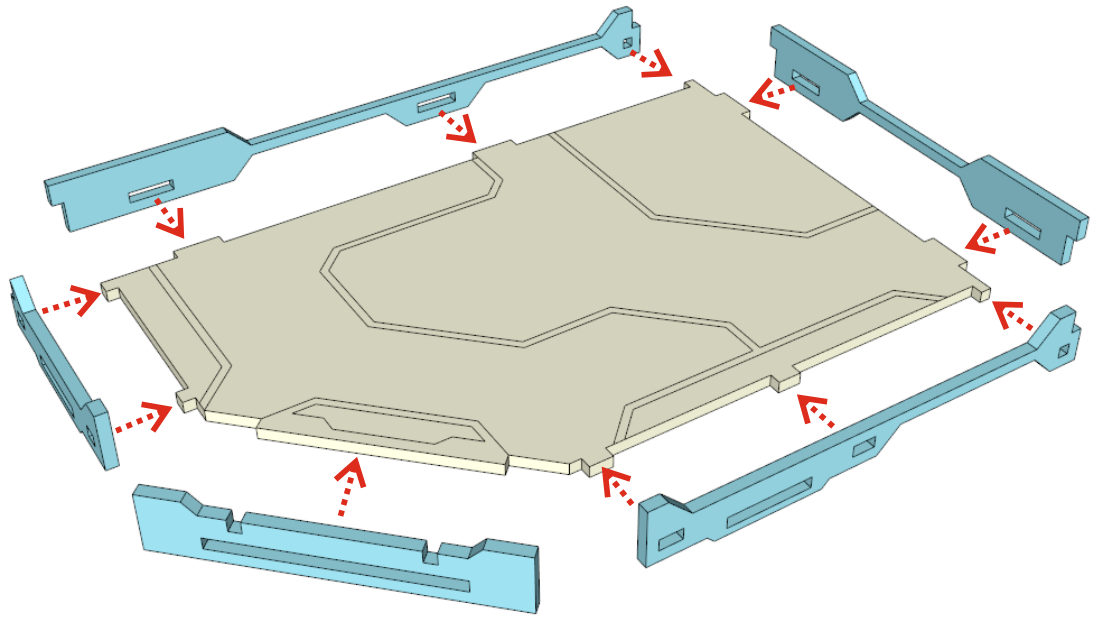
Do not glue this parts.

20.

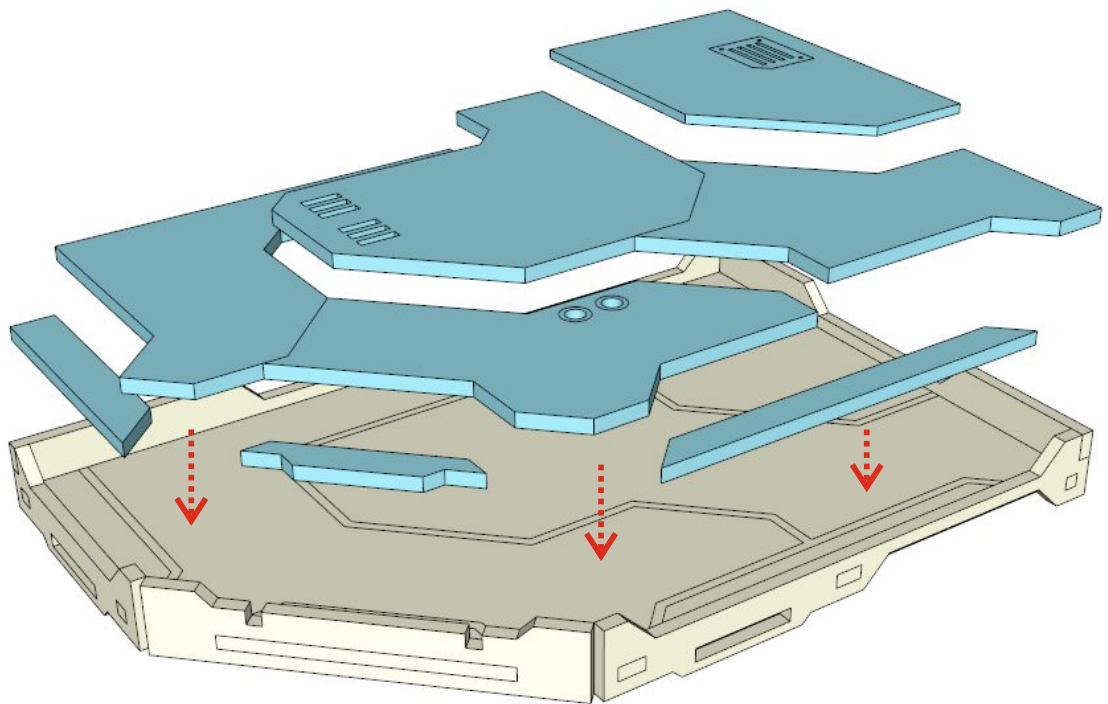


Do not glue this parts.

21.

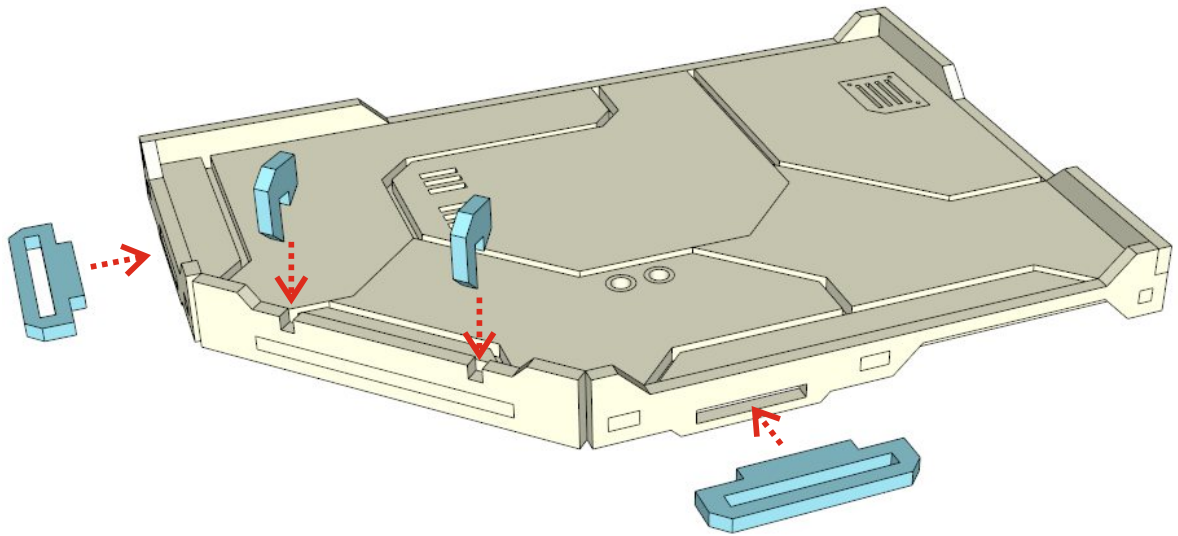


22.

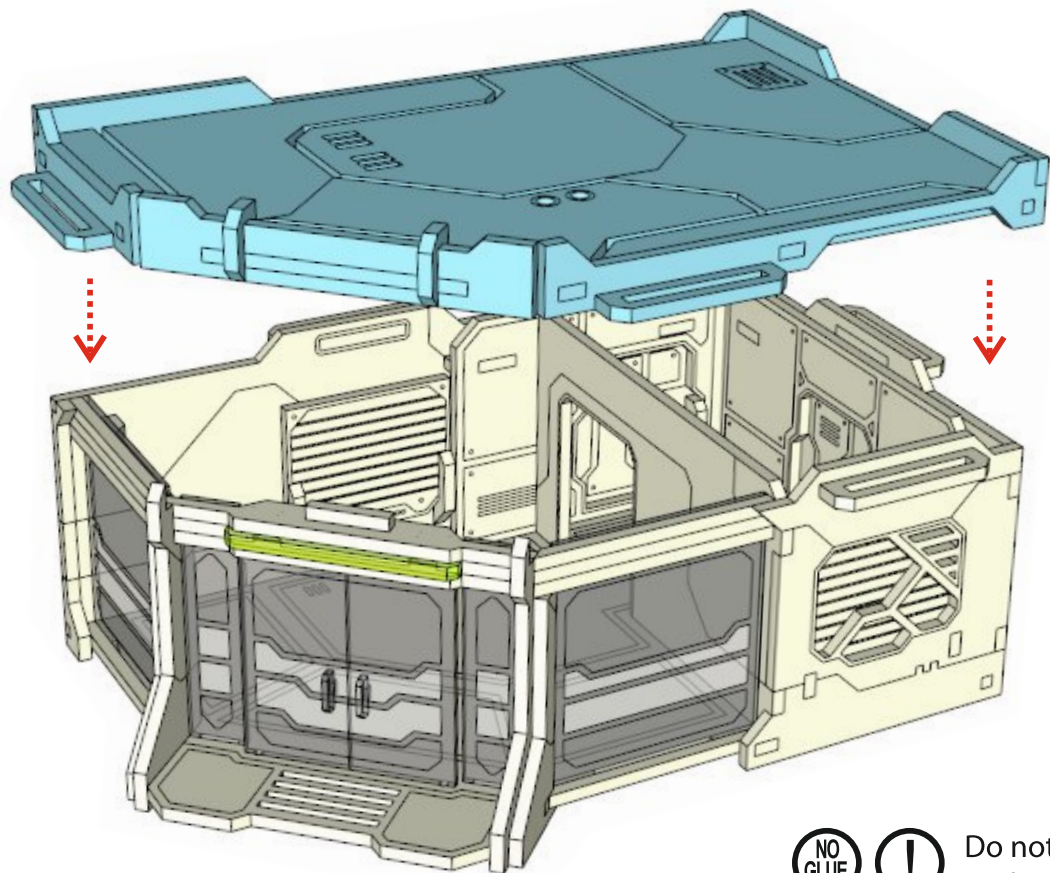




23.



24.



Do not glue it to the building.